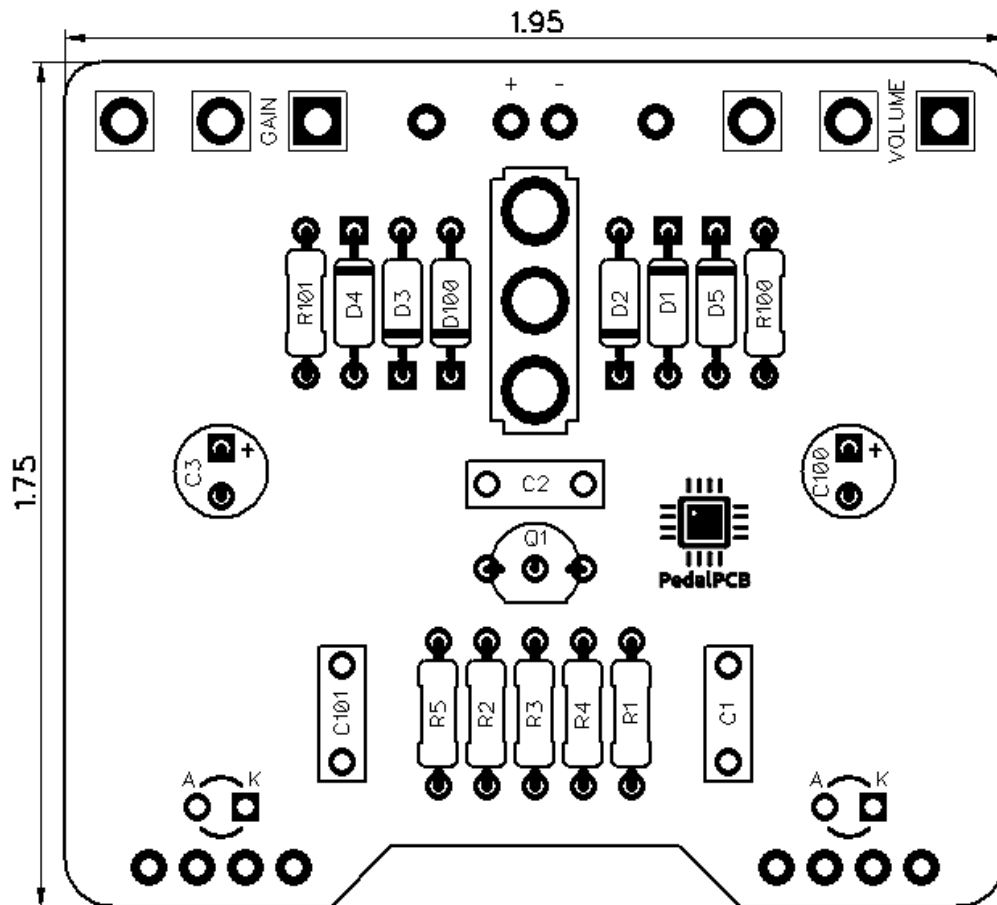


PedalPCB Twill Deluxe

Revision 09.01.19



Controls

- Volume
- Gain
- Mode (Toggle Switch)

Footswitches

- Channel 1 / Channel 2
- Active / Bypass

All trademarks and registered trademarks are the property of their respective owners. The company, product, and service names used in this web site are for identification purposes only. Use of these names, logos, and brands does not imply endorsement.

Twill Deluxe

Parts List

RESISTORS (1/4W)

R1 1M
R2 330R
R3 3M3
R4 3K3
R5 1K
R100 4K7
R101 4K7

CAPACITORS

C1 47n
C2 100n
C3 47u
C100 47u
C101 100n

TRANSISTORS

Q1 2N5088

DIODES

D1 1N914
D2 1N914
D3 BAT46
D4 BAT46
D5 BAT46
D100 1N5817

POTENTIOMETERS

VOLUME B100K
GAIN B1K

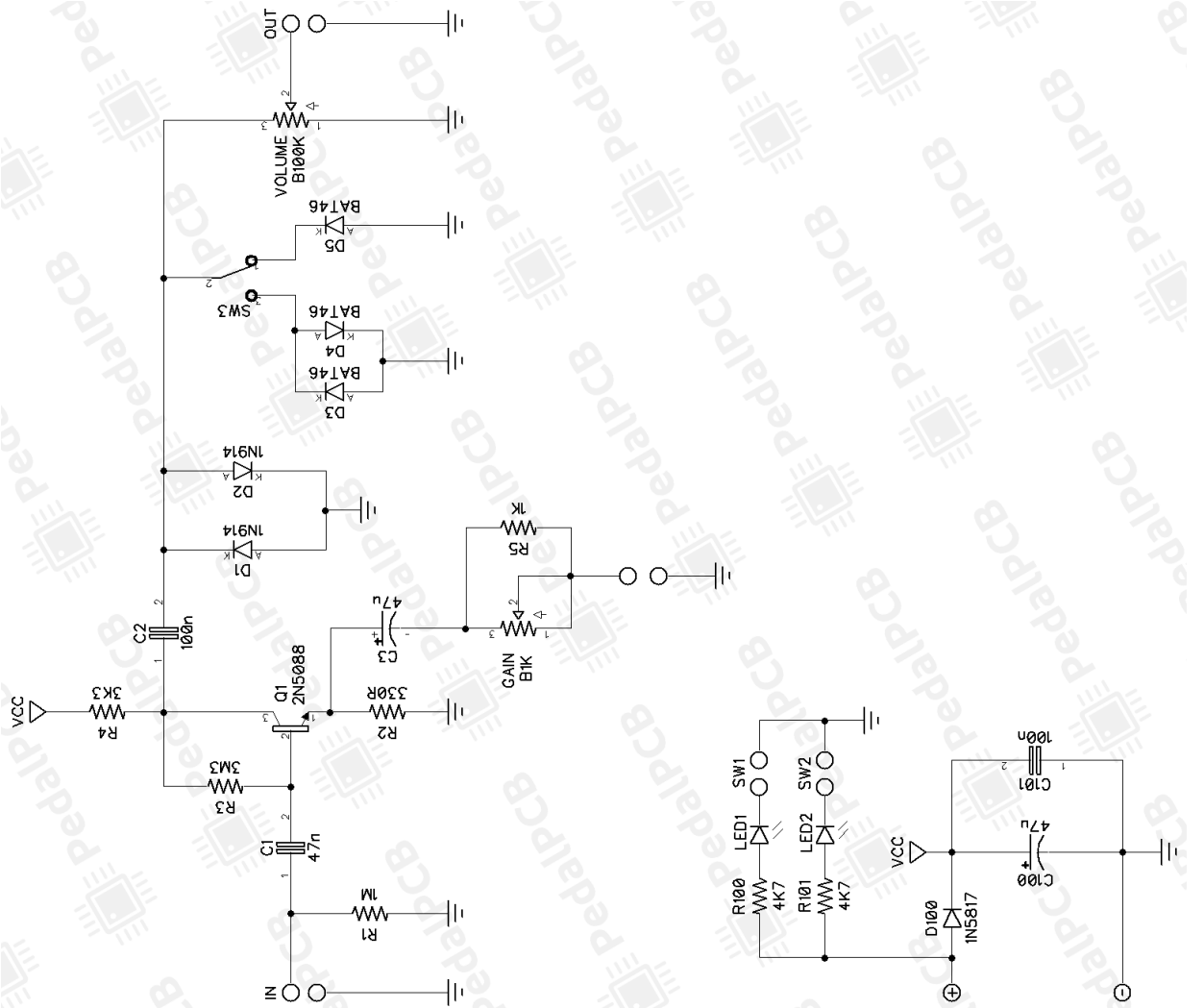
SWITCHES

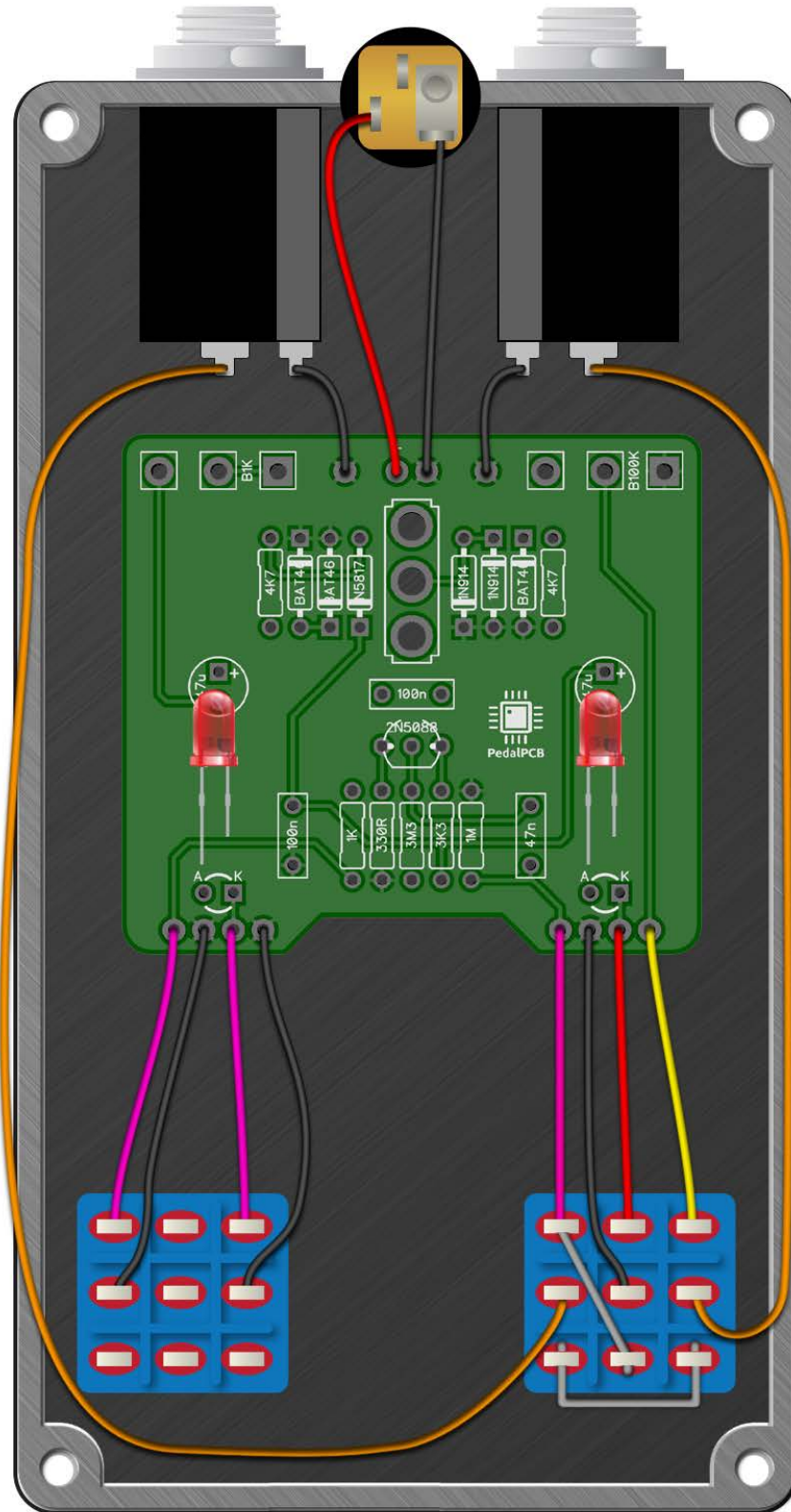
MODE SPDT (On/Off/On)

FOOTSWITCHES

ACTIVE/BYPASS 3PDT
CHANNEL 3PDT

Twii Deluxe





Twill Deluxe

Drill Template
125B enclosure with top mounted jacks

