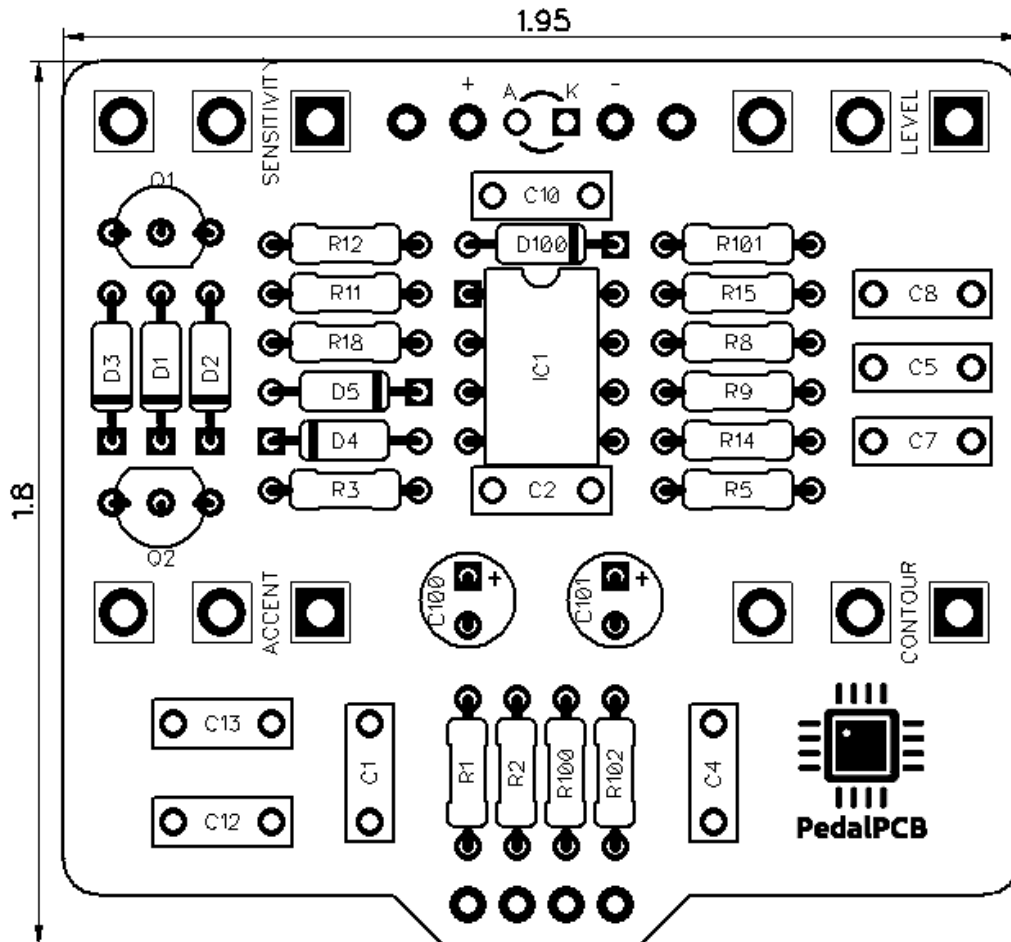


# PedalPCB

## Symbolic Overdrive

Revision 04.27.20



### Controls

- Level
- Sensitivity
- Contour
- Accent

All trademarks and registered trademarks are the property of their respective owners. The company, product, and service names used in this web site are for identification purposes only. Use of these names, logos, and brands does not imply endorsement.

# Symbolic Overdrive

## Parts List

**RESISTORS (1/4W)**

R1	33K
R2	2M2
R3	470K
R5	22K
R8	10K
R9	18K
R11	8K2
R12	820R
R14	56K
R15	1K
R18	820R
R100	4K7
R101	10K
R102	10K

**CAPACITORS**

C1	47p
C2	8n2
C4	2n2
C5	100n
C7	1n
C8	100n
C10	47p
C12	220n
C13	47n
C100	220u
C101	220u

**INTEGRATED CIRCUITS**

IC1	TLC2272
-----	---------

**TRANSISTORS**

Q1	2N7000
Q2	2N7000

**DIODES**

D1	BAT41
D2	BAT41
D3	BAT41
D4	BAT41
D5	BAT41
D100	1N5817

**POTENTIOMETERS**

LEVEL	A100K
SENSITIVITY	A1M
ACCENT	B10K
CONTOUR	B50K



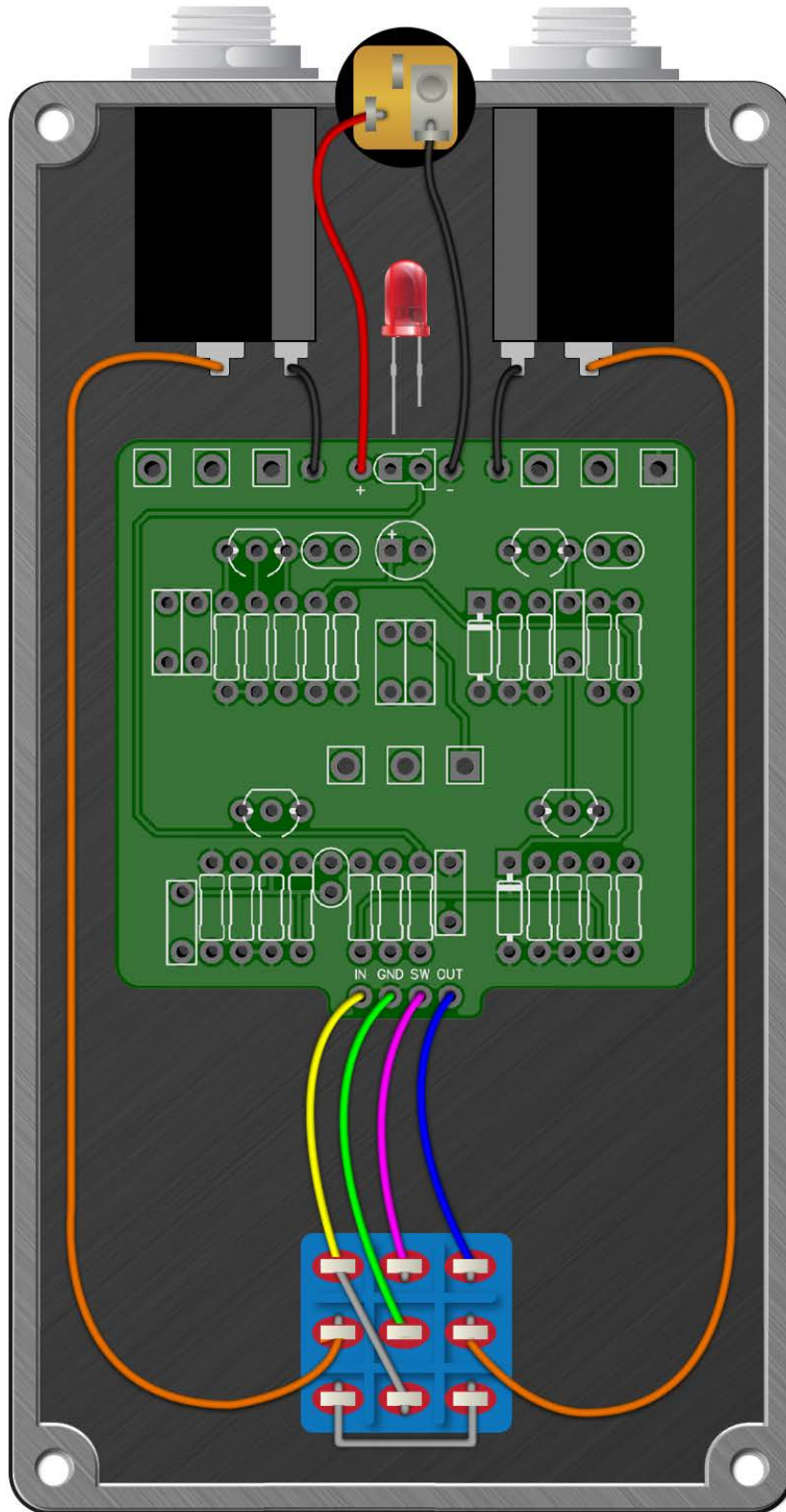
PedalPCB

# Symbolic Overdrive

# Schematic Coming Soon

# Symbolic Overdrive

Wiring Diagram



# Symbolic Overdrive

Drill Template  
125B Enclosure

