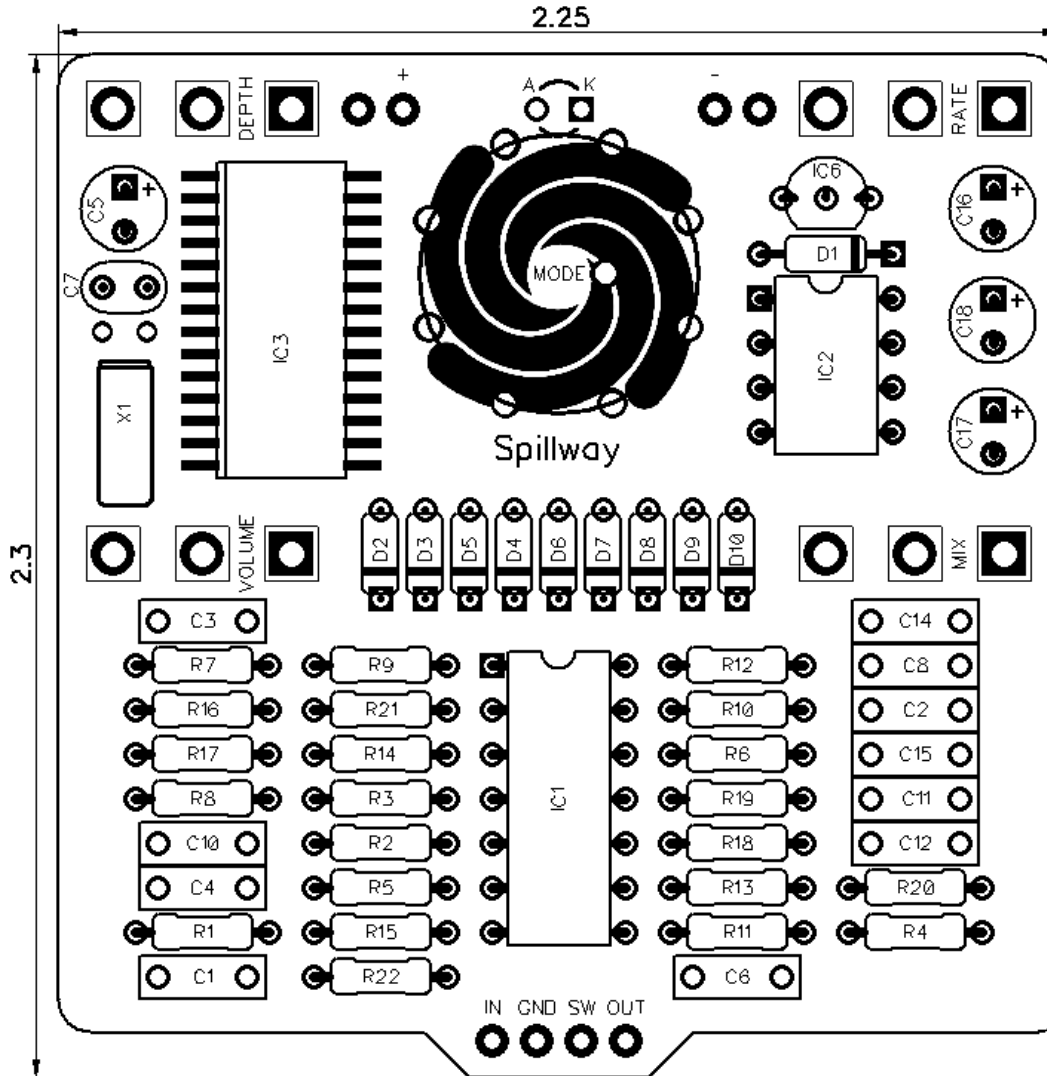




# PedalPCB

## Spillway Vibrato

Revision 12.29.20



### Controls

- **Rate**
- **Depth**
- **Mode (Rotary Switch)**
- **Volume**
- **Mix**

All trademarks and registered trademarks are the property of their respective owners. The company, product, and service names used in this web site are for identification purposes only. Use of these names, logos, and brands does not imply endorsement.

# Spillway Vibrato

## Parts List

### RESISTORS (1/4W)

R1	1M
R2	1M
R3	1K
R4	15K
R5	10K
R6	100K
R7	100K
R8	100R
R9	15K
R10	15K
R11	100K
R12	100R
R13	4K7
R14	10K
R15	10K
R16	100K
R17	100K
R18	1K
R19	15K
R20	15K
R21	15K
R22	1K

### CAPACITORS

C1	100n
C2	470p
C3	1u
C4	1n
C5	10u
C6	1u
C7	15p
C8	1u
C10	1u
C11	1u
C12	2n2
C14	220p
C15	1u
C16	100u
C17	47u
C18	47u

### CRYSTALS

X1	AB38T-32.768KHZ Crystal
----	-------------------------

### ROTARY SWITCH

MODE	1P8T Mini Rotary
------	------------------

### INTEGRATED CIRCUITS

IC1	TL074
IC2	24LC32A
IC3	FV1
IC6	L78L33

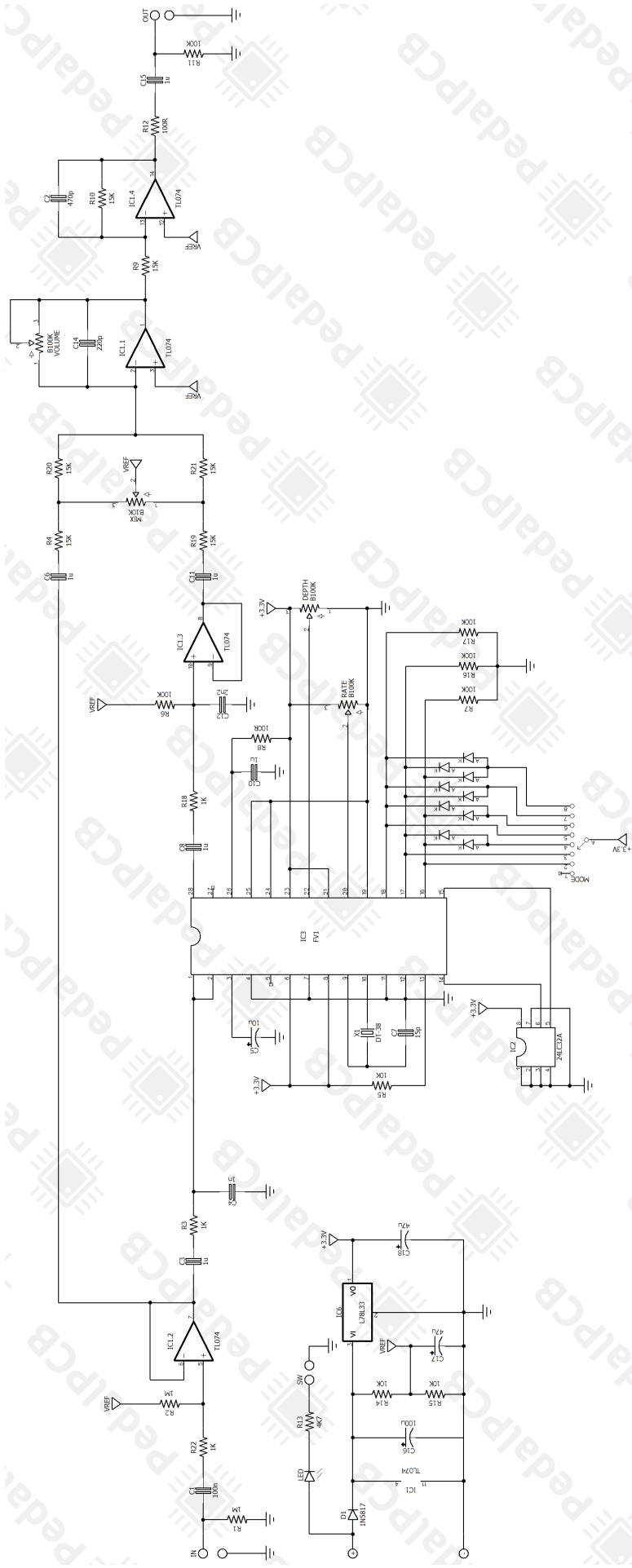
### DIODES

D1	1N5817
D2	1N914
D3	1N914
D4	1N914
D5	1N914
D6	1N914
D7	1N914
D8	1N914
D9	1N914
D10	1N914

### POTENTIOMETERS

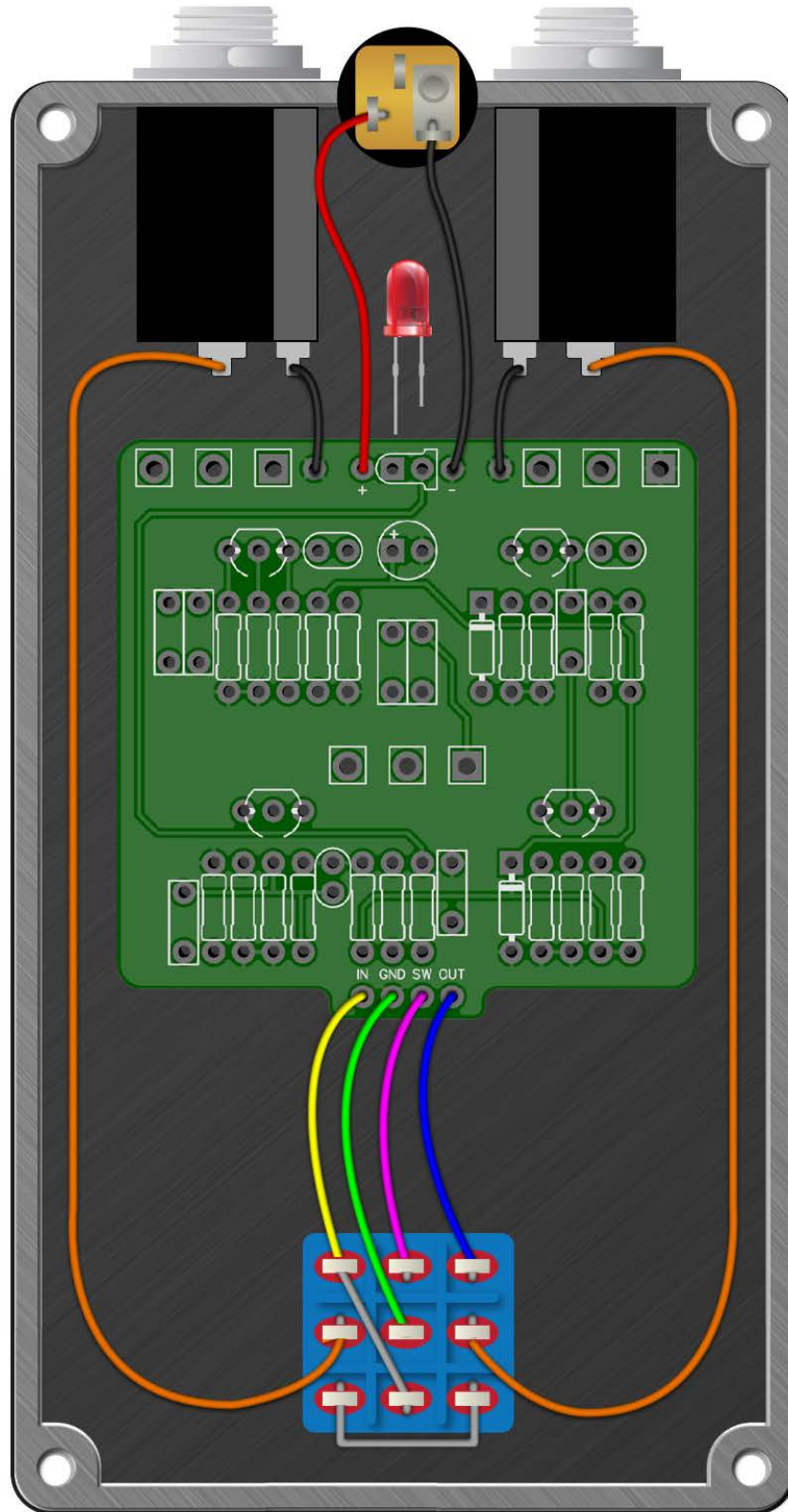
RATE	B100K
DEPTH	B100K
MIX	B10K
VOLUME	B100K

# Spillway Vibrato



# Spillway Vibrato

Wiring Diagram



# Spillway Vibrato

Drill Template  
125B enclosure with top mounted jacks

