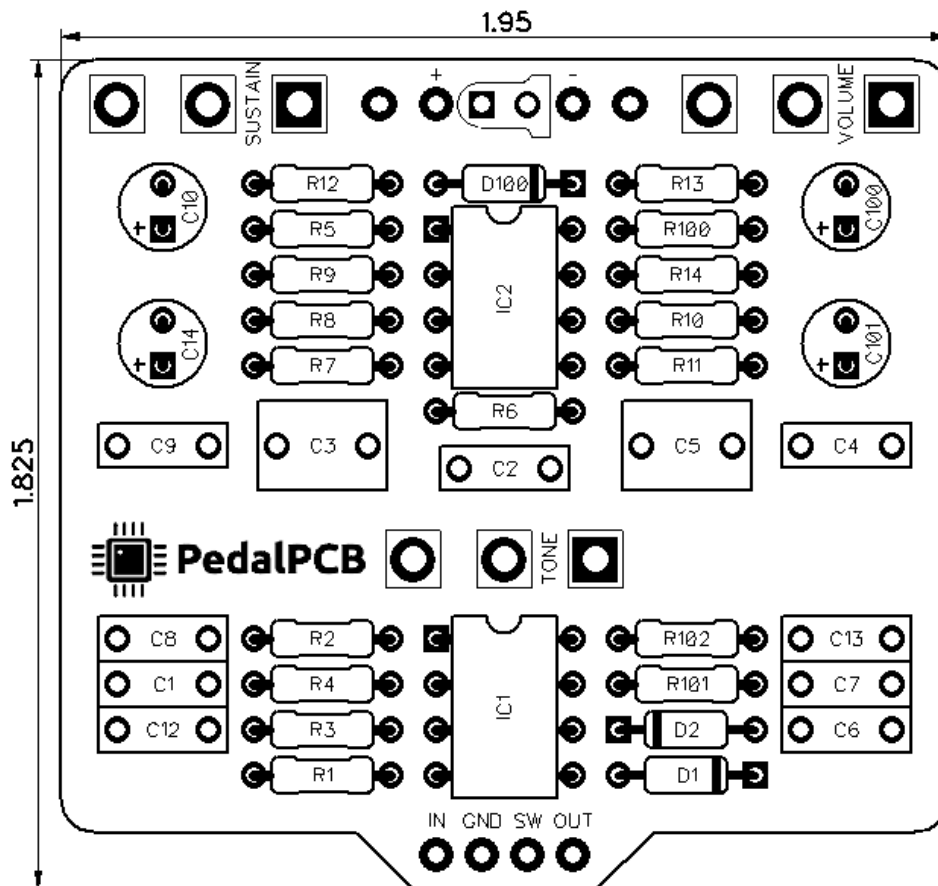


PedalPCB

Semi-Sweet Distortion

Revision 06.23.18



Controls

- **Volume** - Controls the overall output volume
- **Tone** - Adjusts the tone from warm to bright
- **Sustain** - Controls the amount of distortion

All trademarks and registered trademarks are the property of their respective owners. The company, product, and service names used in this web site are for identification purposes only. Use of these names, logos, and brands does not imply endorsement.

Semi-Sweet Distortion

Parts List

RESISTORS

R1 1M
R2 10K
R3 1M
R4 150K
R5 510
R6 10K
R7 100K
R8 10K
R9 6K8
R10 1M
R11 2K4
R12 10K
R13 91
R14 1M
R100 4K7
R101 150K
R102 150K

POTENTIOMETERS

VOLUME 10K
TONE W20K
SUSTAIN B50K

CAPACITORS

C1 10n
C2 10p
C3 470n
C4 4n7
C5 1u
C6 10n
C7 10n
C8 220n
C9 1n
C10 22u
C12 1n
C13 10n
C14 10u
C100 100u
C101 10u

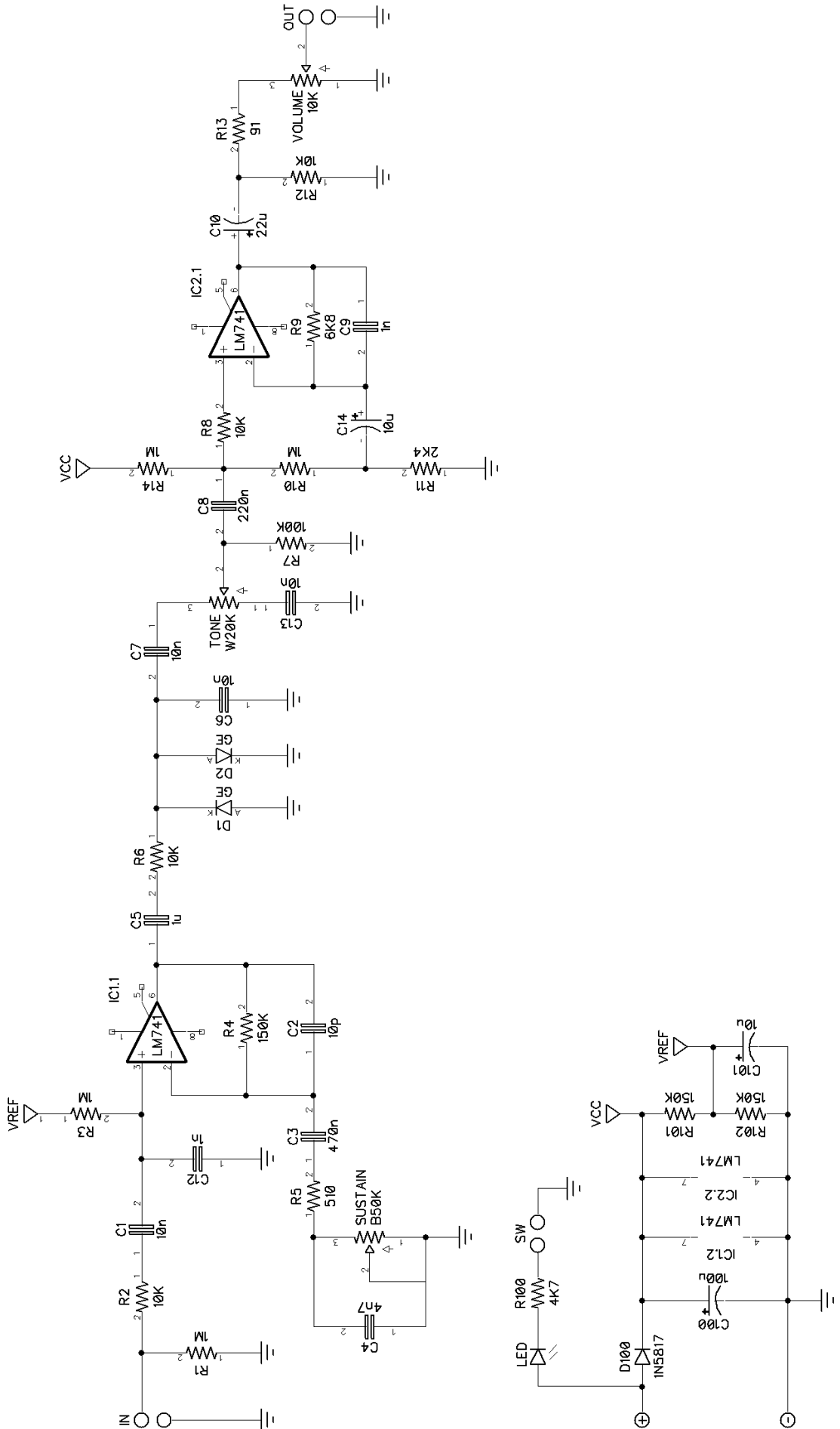
INTEGRATED CIRCUITS

IC1 LM741
IC2 LM741

DIODES

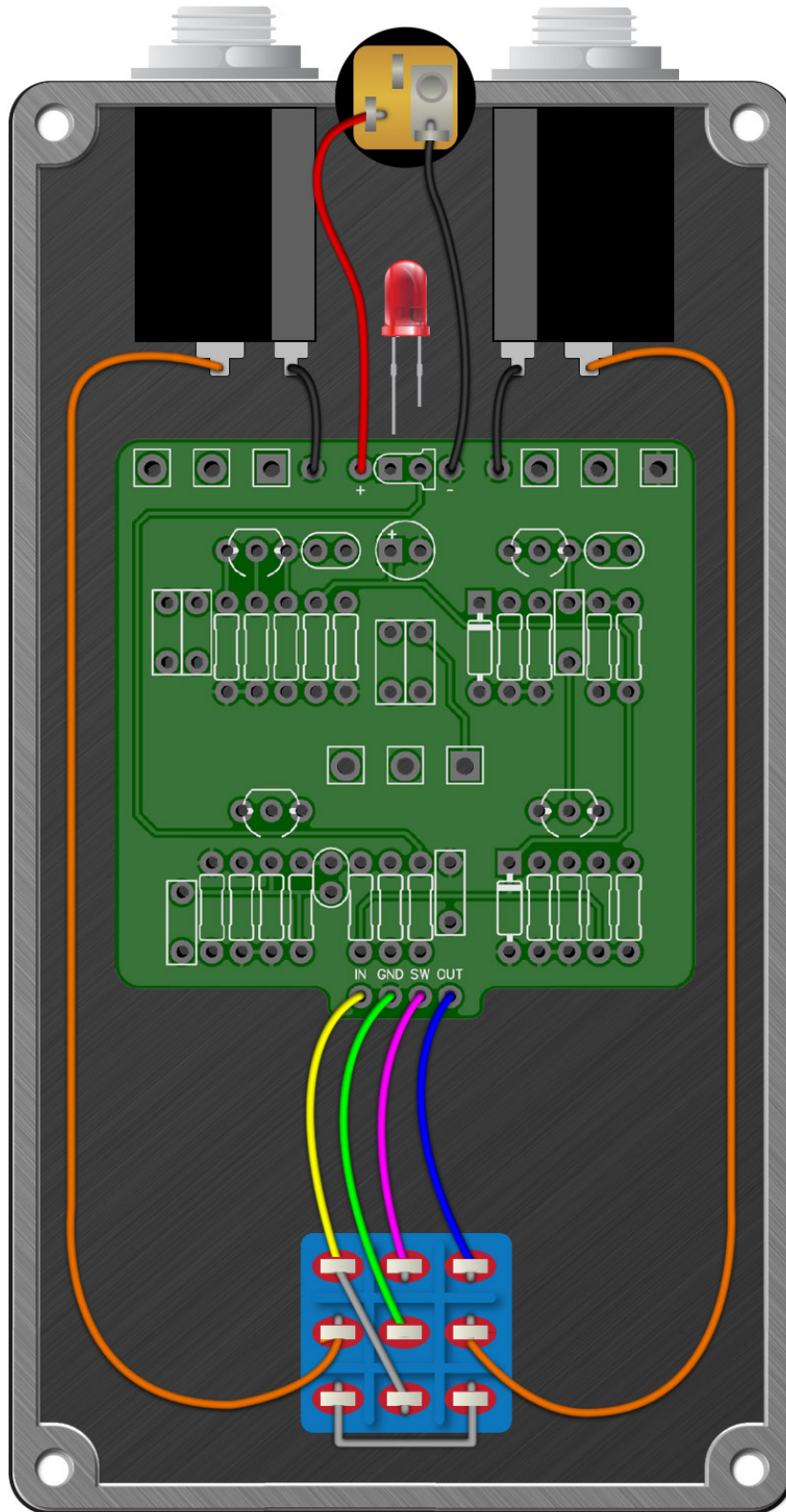
D1 GE (1N34A, 1N270, etc)
D2 GE (1N34A, 1N270, etc)
D100 1N5817

Semi-Sweet Distortion



Semi-Sweet Distortion

Wiring Diagram



Semi-Sweet Distortion

Drill Template

125B enclosure with top mounted jacks

