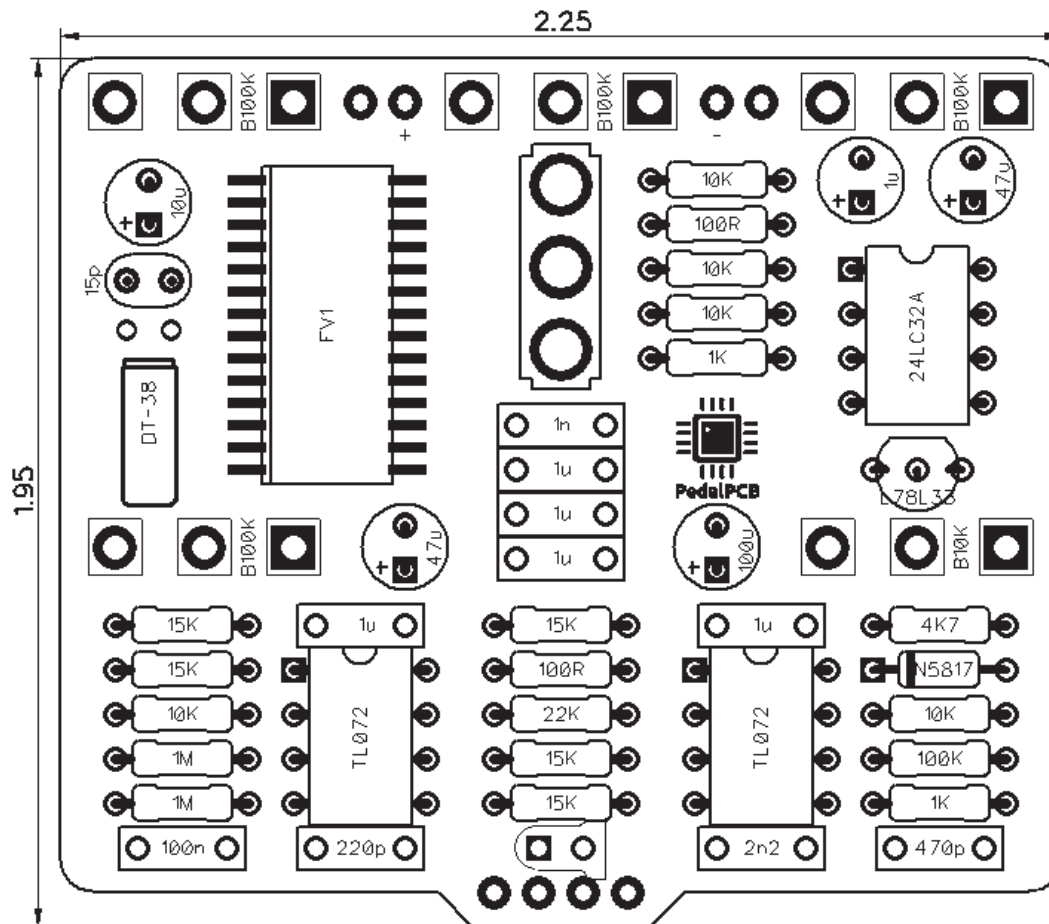




# PedalPCB

## Pythagoras v2

Revision 02.19.19



### Controls

- **Parameter 1**
- **Parameter 2**
- **Parameter 3**
- **Volume**
- **Mix**
- **Mode (Toggle Switch)**

All trademarks and registered trademarks are the property of their respective owners. The company, product, and service names used in this web site are for identification purposes only. Use of these names, logos, and brands does not imply endorsement.

**RESISTORS (1/4W)**

|     |      |
|-----|------|
| R1  | 1M   |
| R2  | 1M   |
| R3  | 1K   |
| R4  | 15K  |
| R5  | 10K  |
| R6  | 100K |
| R7  | 10K  |
| R8  | 100R |
| R9  | 15K  |
| R10 | 15K  |
| R11 | 22K  |
| R12 | 100R |
| R13 | 4K7  |
| R14 | 10K  |
| R15 | 10K  |
| R16 | 10K  |
| R17 | 1K   |
| R18 | 15K  |
| R19 | 15K  |

**CAPACITORS**

|     |         |
|-----|---------|
| C1  | 100n    |
| C2  | 1u MLCC |
| C3  | 1u MLCC |
| C4  | 1n      |
| C5  | 10u     |
| C6  | 1u MLCC |
| C7  | 15p     |
| C8  | 1u MLCC |
| C9  | 1u MLCC |
| C10 | 1u MLCC |
| C11 | 2n2     |
| C12 | 220p    |
| C13 | 470p    |
| C14 | 100u    |
| C15 | 47u     |
| C16 | 47u     |

**CRYSTALS**

|    |                         |
|----|-------------------------|
| X1 | AB38T-32.768KHZ Crystal |
|----|-------------------------|

**TOGGLE SWITCH**

|     |                   |
|-----|-------------------|
| SW1 | *SPDT (On/Off/On) |
|-----|-------------------|

*\*SPDT (On/On) for Kaleidoscope*

**INTEGRATED CIRCUITS**

|     |         |
|-----|---------|
| IC1 | TL072   |
| IC2 | 24LC32A |
| IC3 | FV1     |
| IC4 | L78L33  |
| IC5 | TL072   |

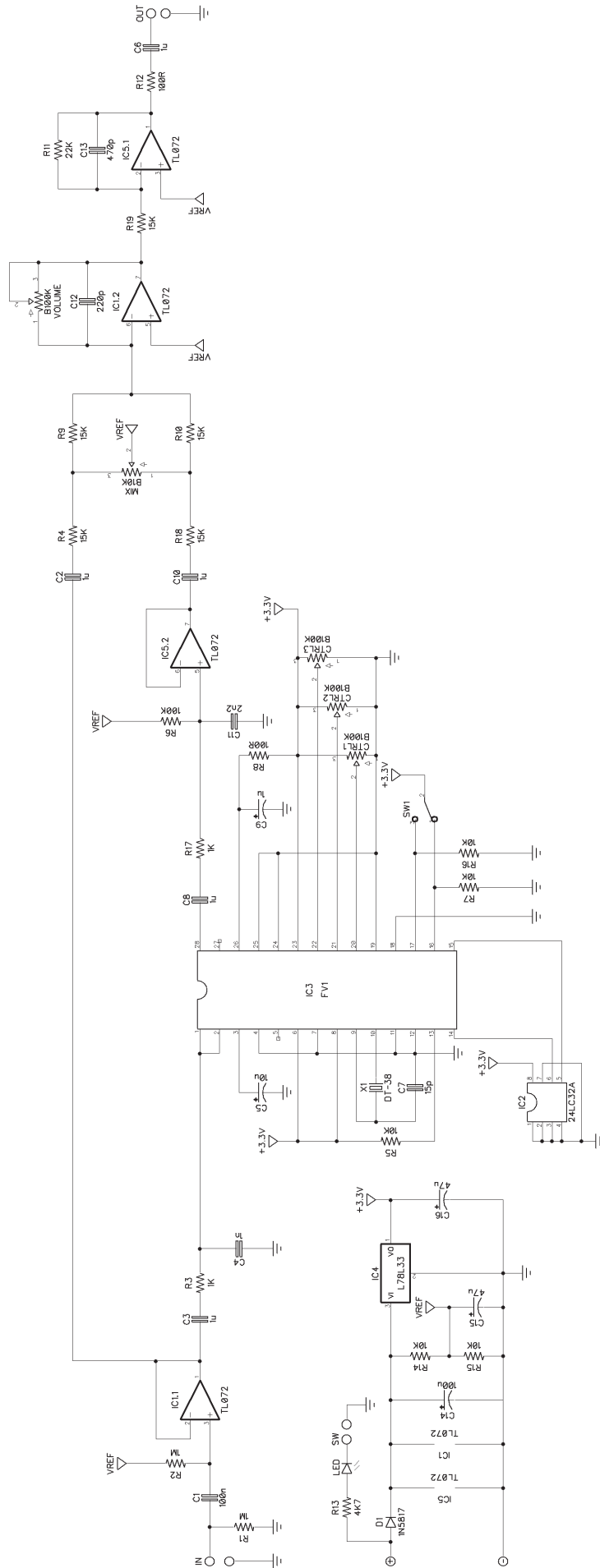
**DIODES**

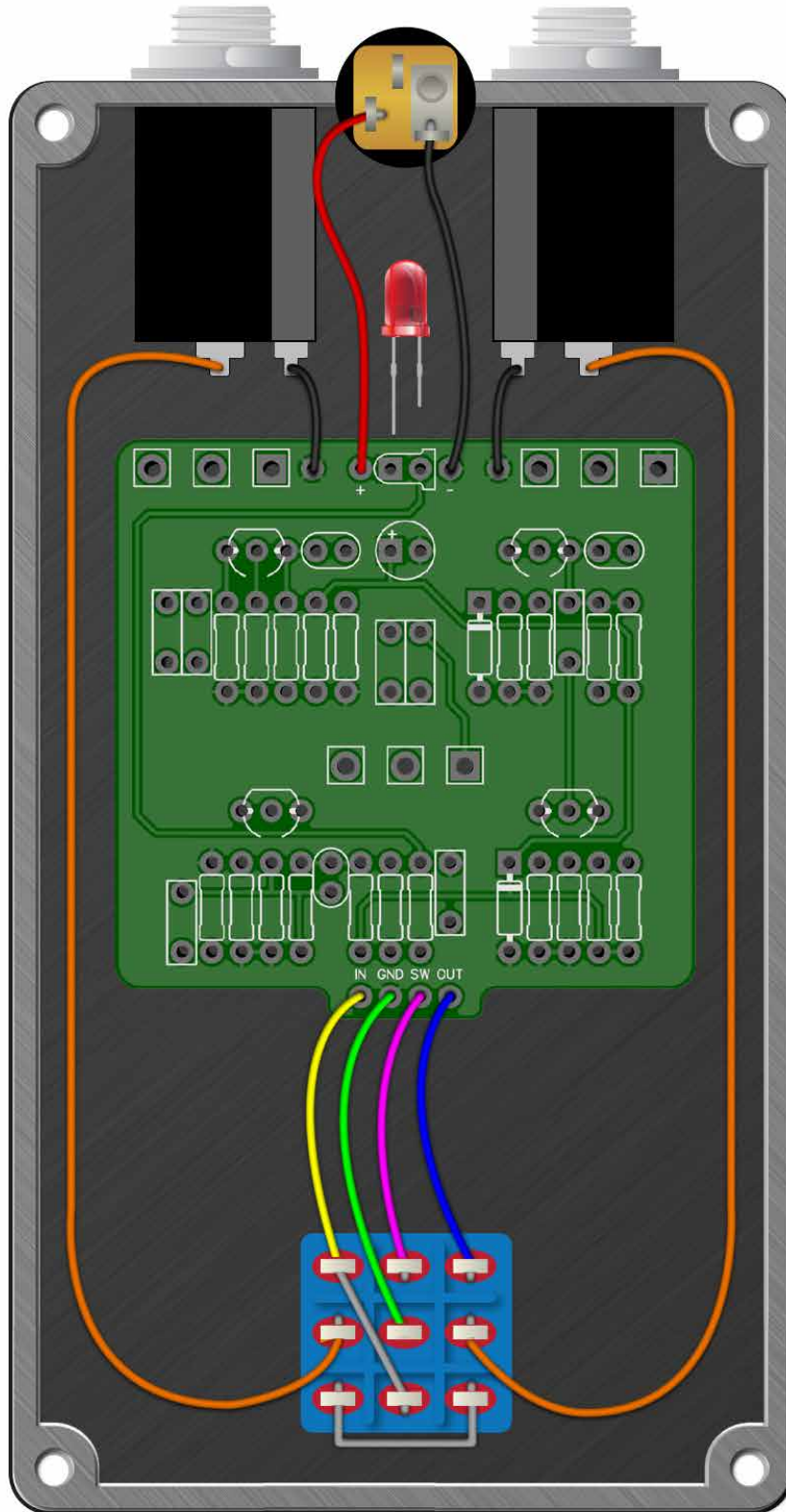
|    |        |
|----|--------|
| D1 | 1N5817 |
|----|--------|

**POTENTIOMETERS**

|        |       |
|--------|-------|
| CTRL1  | B100K |
| CTRL2  | B100K |
| CTRL3  | B100K |
| MIX    | B10K  |
| VOLUME | B100K |

# Pythagoras v2





# Pythagoras v2

Drill Template  
125B enclosure with top mounted jacks

