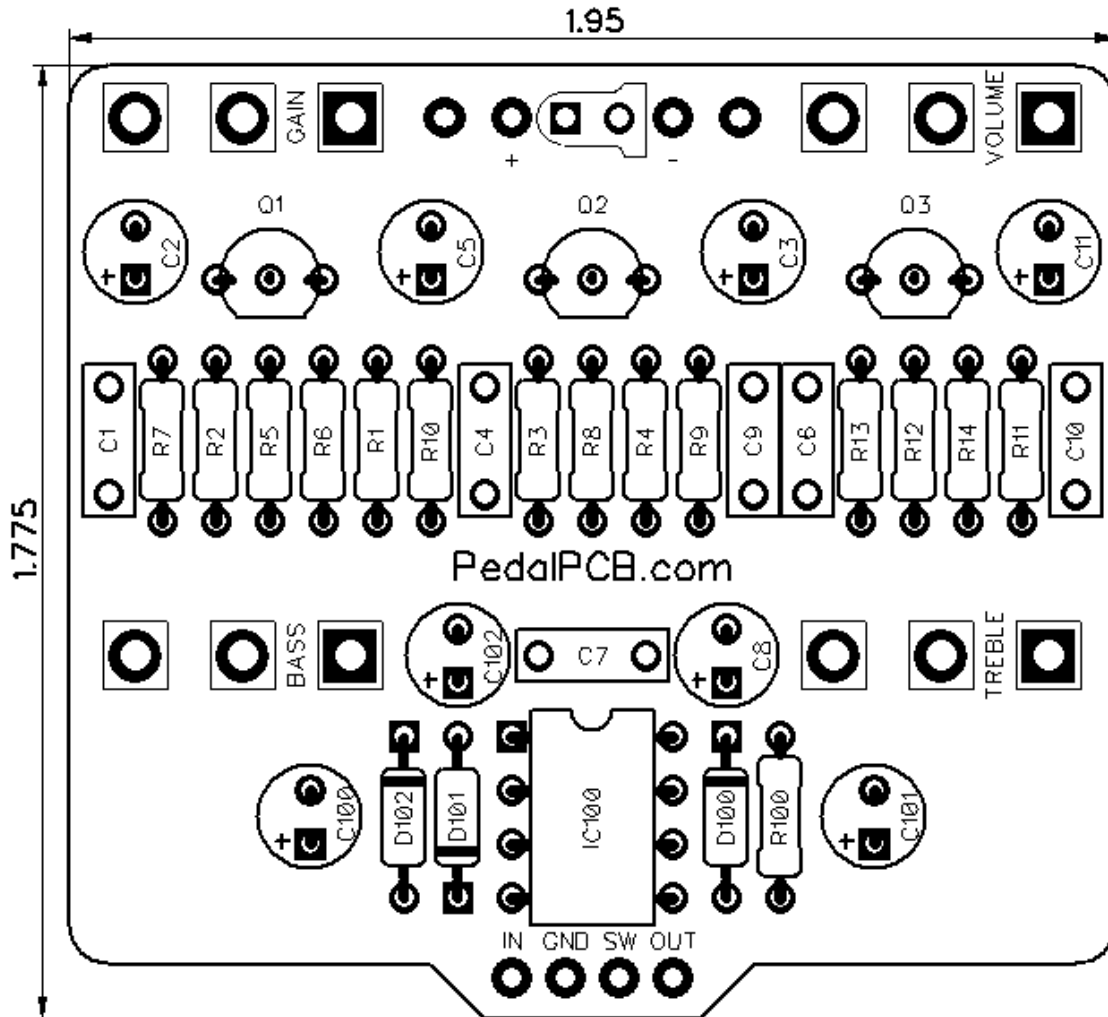




# PedalPCB

## Powersound Overdrive

Revision 09.26.18



### Controls

- **Volume** - Controls the overall output volume
- **Gain** - Controls the amount of overdrive
- **Treble** - Adjusts the level of treble frequencies
- **Bass** - Adjusts the level of bass frequencies

All trademarks and registered trademarks are the property of their respective owners. The company, product, and service names used in this web site are for identification purposes only. Use of these names, logos, and brands does not imply endorsement.

**RESISTORS**

R1 6K8  
R2 100K  
R3 1K8  
R4 470  
R5 150K  
R6 12K  
R7 4K7  
R8 39K  
R9 5K6  
R10 4K7  
R11 33K  
R12 150K  
R13 1K8  
R14 470  
R100 4K7

**CAPACITORS**

C1 220n  
C2 10u  
C3 25u  
C4 500p  
C5 4u7  
C6 10n  
C7 100n  
C8 4u7  
C9 220n  
C10 10n  
C11 25u  
C100 10uF  
C101 10uF  
C102 10uF

**INTEGRATED CIRCUITS**

IC100 TC1044SCPA

**TRANSISTORS**

Q1 BC109  
Q2 BC109  
Q3 BC109

**DIODES**

D100 1N5817  
D101 1N5817  
D102 1N5817

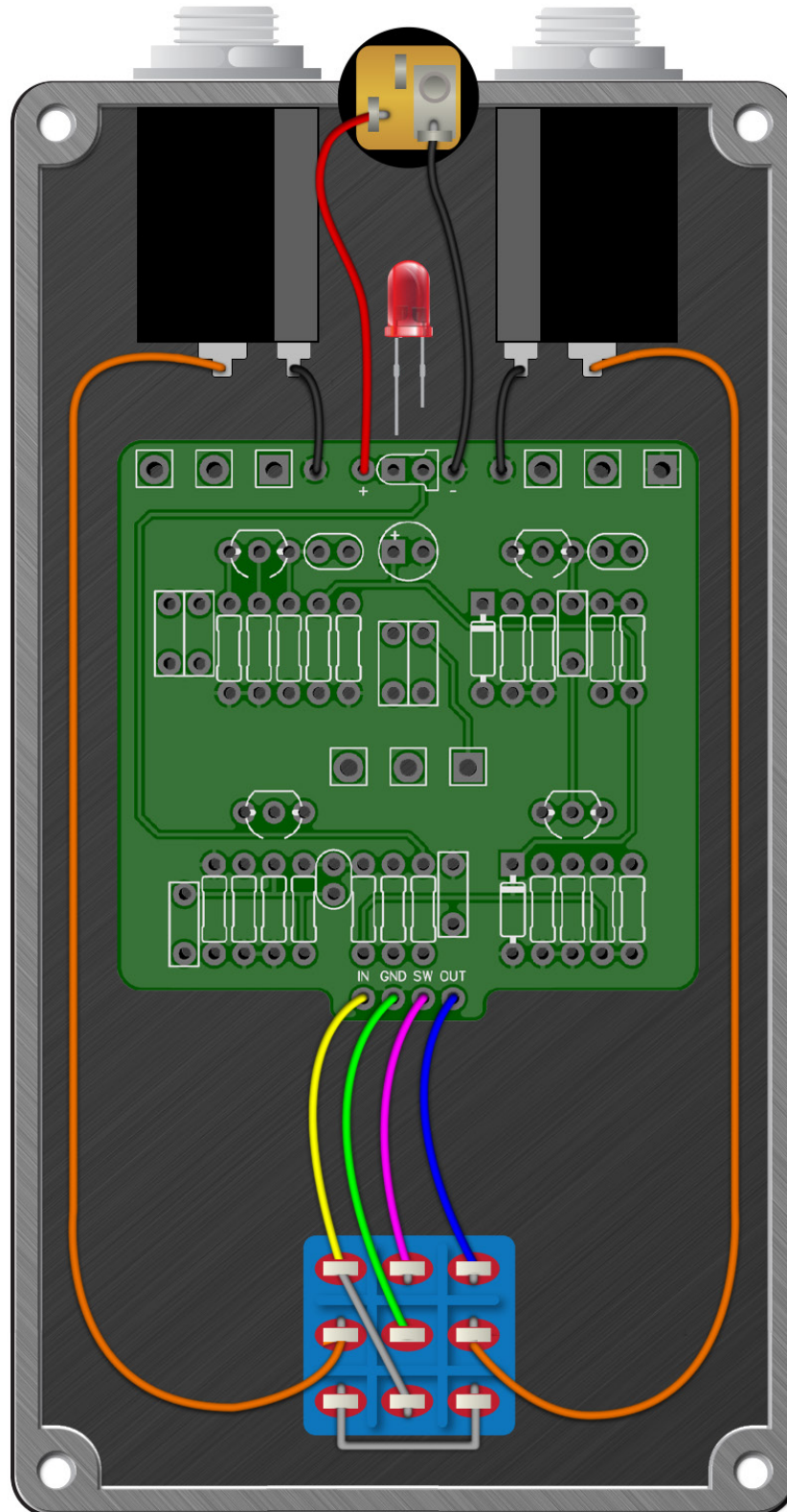
**POTENTIOMETERS**

VOLUME A100K  
GAIN B10K  
TREBLE B100K  
BASS B100K



# Powersound Overdrive

Wiring Diagram



# Powersound Overdrive

Drill Template

125B enclosure with top mounted jacks

