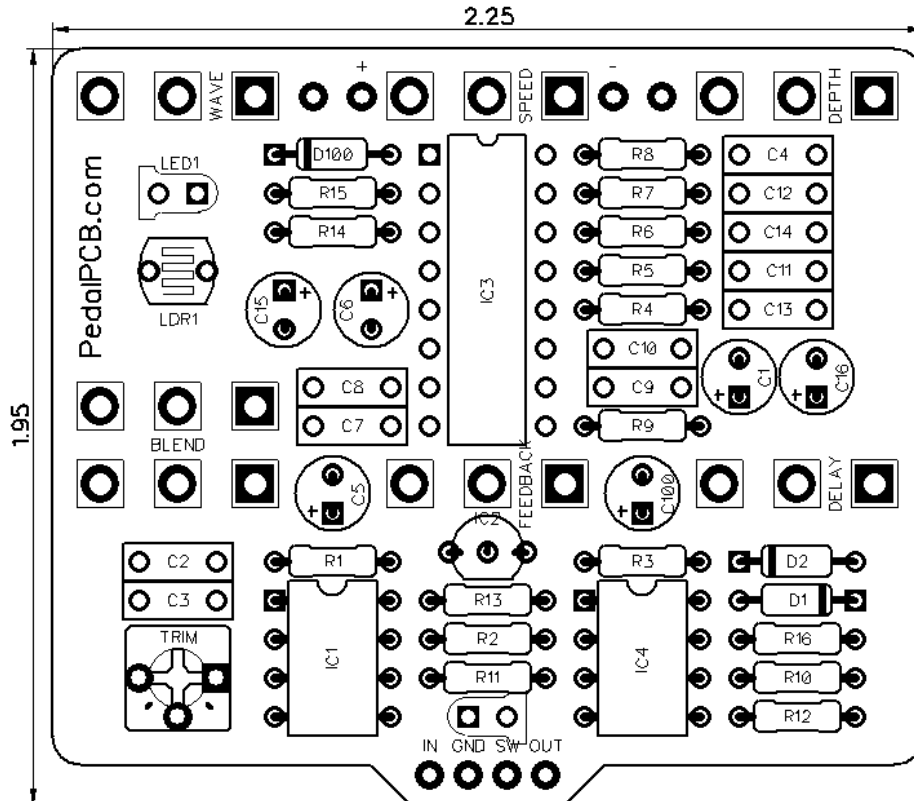




PedalPCB.com

Pitch Witch

Revision 04.07.18



Resistors

| | |
|-----|------|
| R1 | 100K |
| R2 | 100K |
| R3 | 15K |
| R4 | 22K |
| R5 | 10K |
| R6 | 22K |
| R7 | 22K |
| R8 | 10K |
| R9 | 1K |
| R10 | 10K |
| R11 | 10K |
| R12 | 100K |
| R13 | 47K |
| R14 | 10K |
| R15 | 10K |
| R16 | 1K |

Capacitors

| | |
|------|-------|
| C1 | 47uF |
| C2 | 10nF |
| C3 | 100nF |
| C4 | 100nF |
| C5 | 47uF |
| C6 | 47uF |
| C7 | 100nF |
| C8 | 100nF |
| C9 | 100nF |
| C10 | 100nF |
| C11 | 1nF |
| C12 | 1nF |
| C13 | 100nF |
| C14 | 100nF |
| C15 | 47uF |
| C16 | 1uF |
| C100 | 47uF |

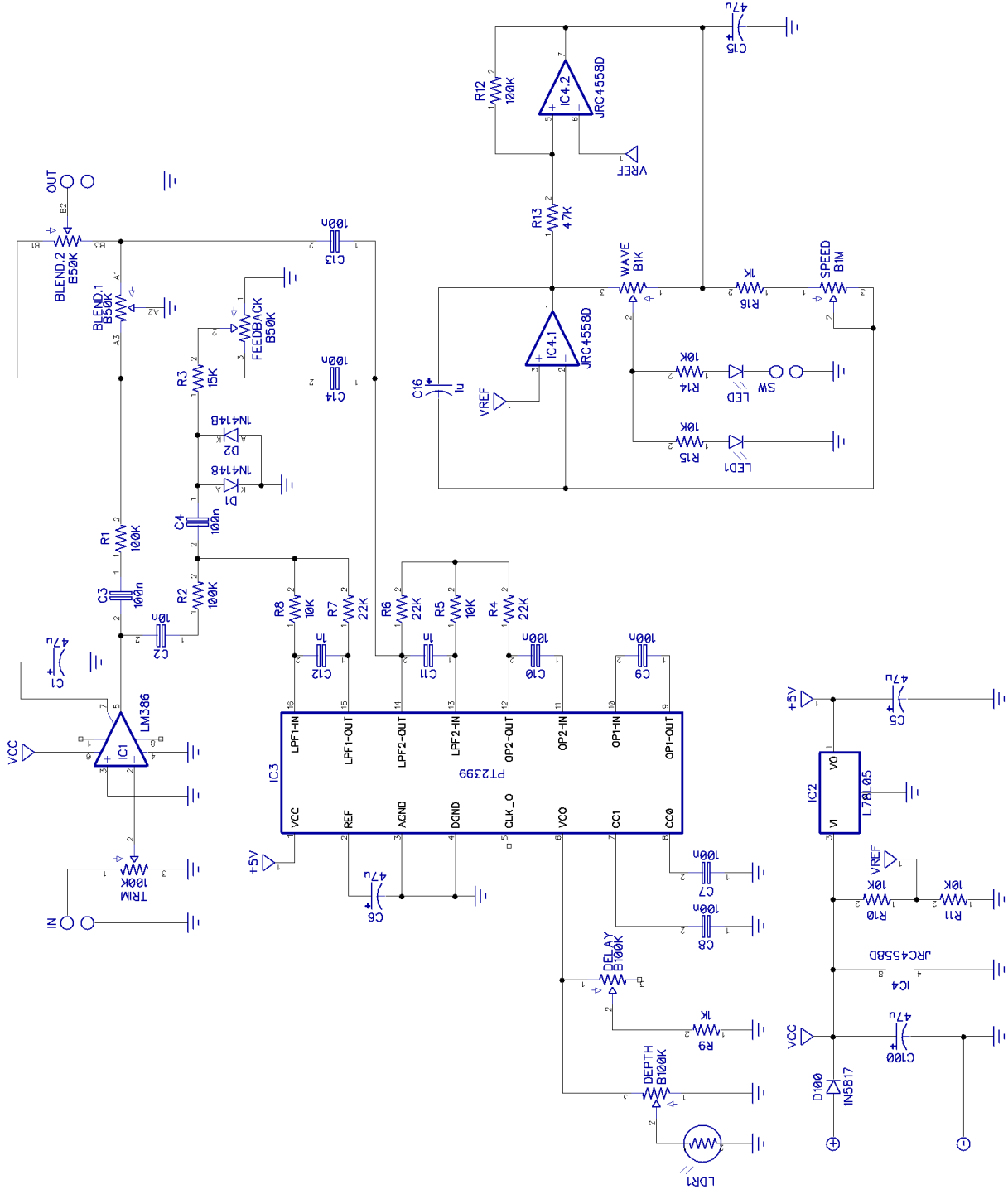
Semiconductors

| | |
|------|----------------|
| IC1 | LM386 |
| IC2 | L78L05 |
| IC3 | PT2399 |
| IC4 | JRC4558D |
| D1 | 1N4148 |
| D2 | 1N4148 |
| D100 | 1N5817 |
| LDR1 | 1M LDR |
| LED1 | 5mm Yellow LED |
| LED | Indicator LED |

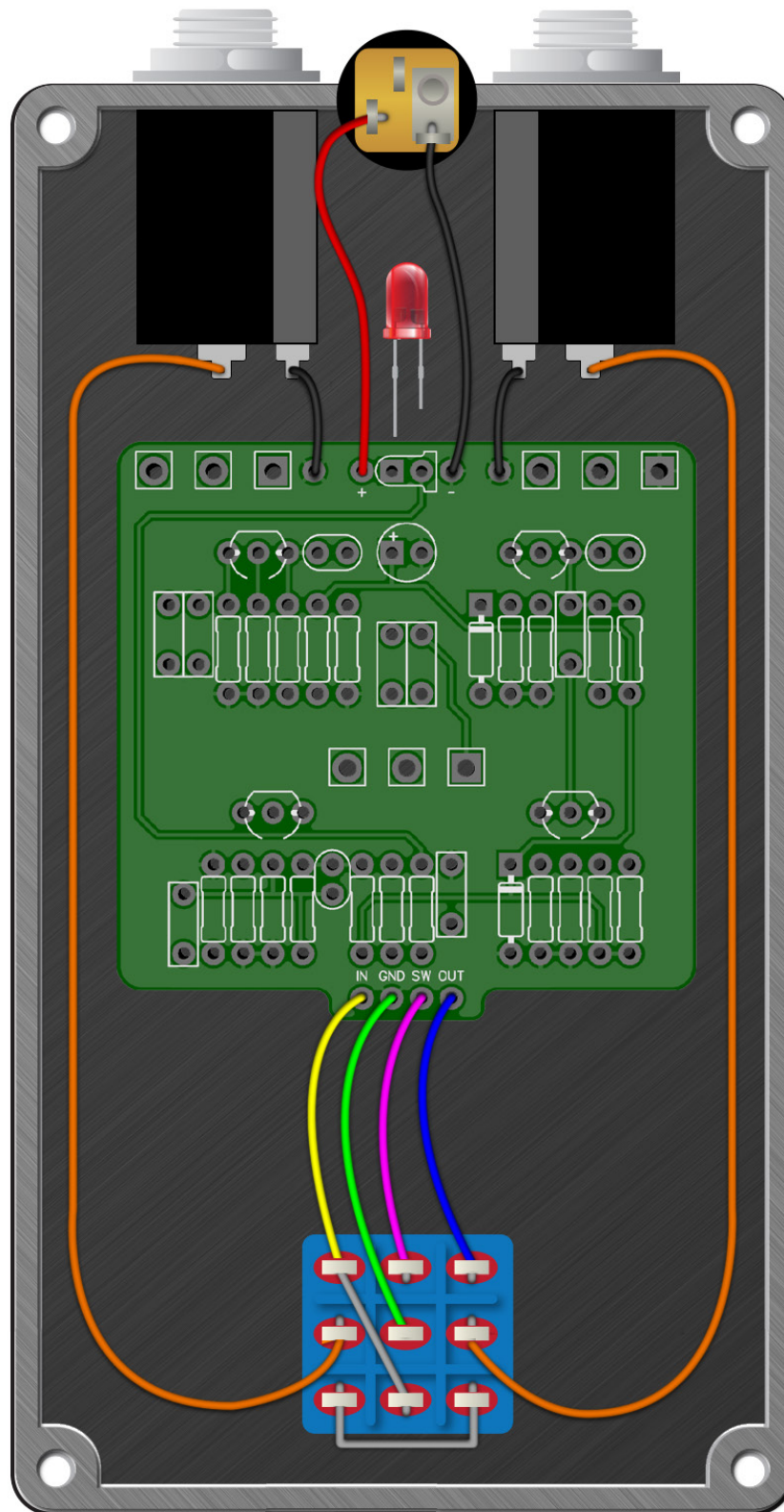
Potentiometers

| | |
|----------|----------------------|
| DELAY | B100K |
| SPEED | B1M |
| DEPTH | B100K |
| WAVE | B1K |
| BLEND | B50K |
| FEEDBACK | B50K |
| TRIM | 100K Trim (3362P) |

Pitch Witch



Wiring Diagram



Drill Template

4S125B enclosure with top mounted jacks

