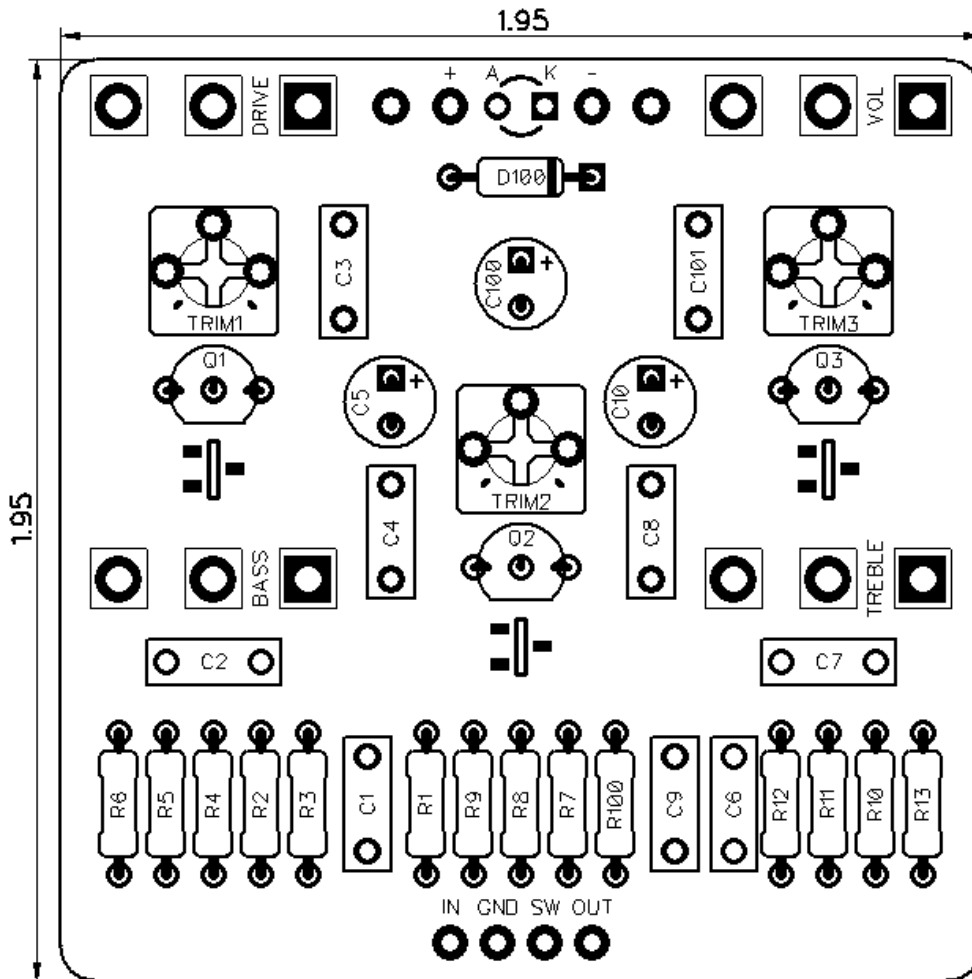


# PedalPCB

## Son of Ben Preamp

Revised 9/30/21



### CONTROLS AND FEATURES

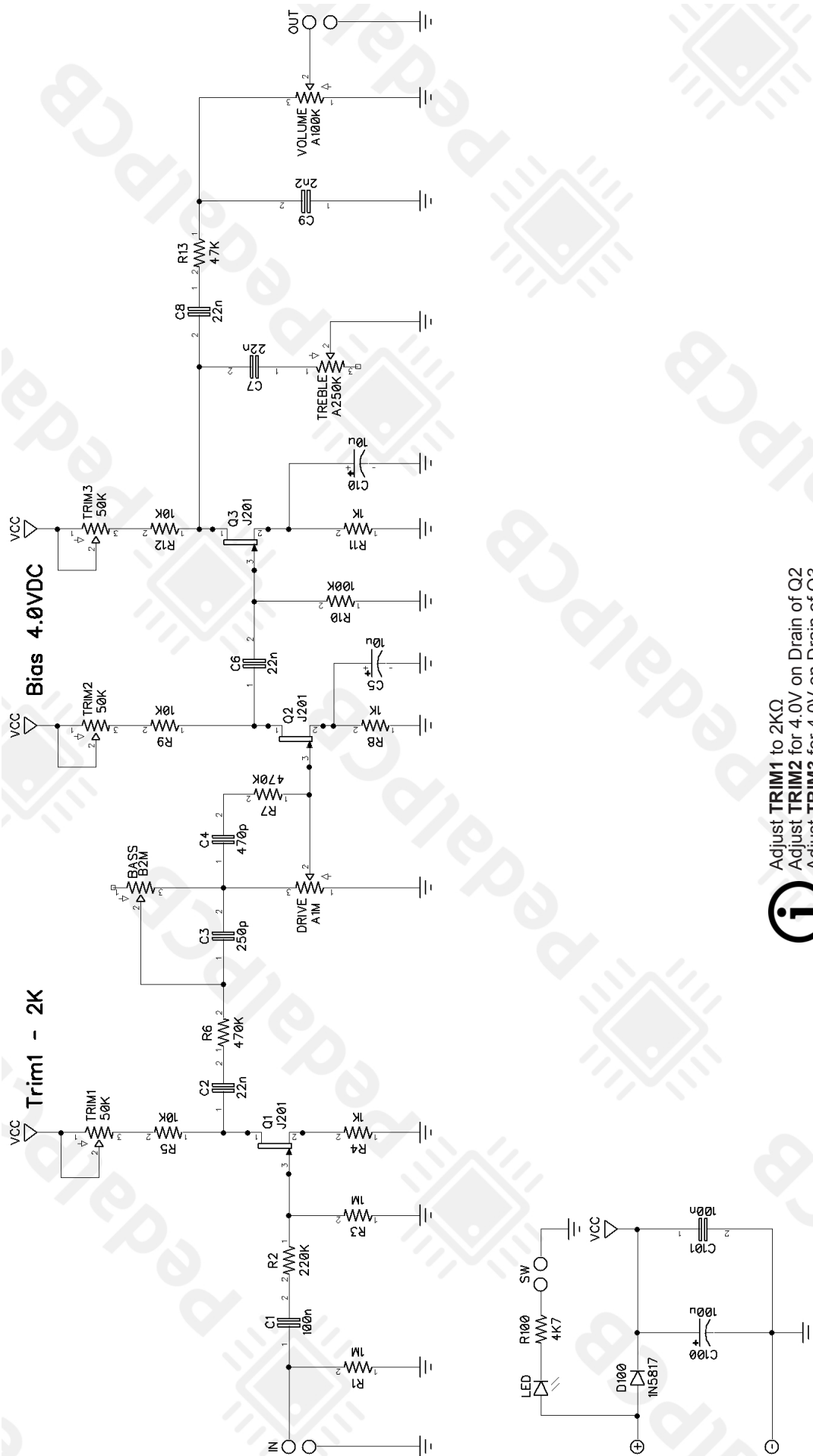
- Volume
- Drive
- Treble
- Bass

All trademarks and registered trademarks are the property of their respective owners. The company, product, and service names used in this web site are for identification purposes only. Use of these names, logos, and brands does not imply endorsement.

LOCATION	VALUE	TYPE	NOTES
R1	1M	Resistor, 1/4W	
R2	220K	Resistor, 1/4W	
R3	1M	Resistor, 1/4W	
R4	1K	Resistor, 1/4W	
R5	10K	Resistor, 1/4W	
R6	470K	Resistor, 1/4W	
R7	470K	Resistor, 1/4W	
R8	1K	Resistor, 1/4W	
R9	10K	Resistor, 1/4W	
R10	100K	Resistor, 1/4W	
R11	1K	Resistor, 1/4W	
R12	10K	Resistor, 1/4W	
R13	47K	Resistor, 1/4W	
R100	4K7	Resistor, 1/4W	
C1	100n	Film capacitor, 7.2 x 2.5mm	
C2	22n	Film capacitor, 7.2 x 2.5mm	
C3	250p	Ceramic capacitor	
C4	470p	Ceramic capacitor	
C5	10u	Electrolytic capacitor, 5mm	
C6	22n	Film capacitor, 7.2 x 2.5mm	
C7	22n	Film capacitor, 7.2 x 2.5mm	
C8	22n	Film capacitor, 7.2 x 2.5mm	
C9	2n2	Film capacitor, 7.2 x 2.5mm	
C10	10u	Electrolytic capacitor, 5mm	*Optional (see below)
C100	100u	Electrolytic capacitor, 5mm	
C101	100n	Film capacitor, 7.2 x 2.5mm	
D100	1N5817	Schottky diode, DO-41	
Q1	J201	JFET transistor, N-channel	*Alternate MMBFJ201 (SMD)
Q2	J201	JFET transistor, N-channel	*Alternate MMBFJ201 (SMD)
Q3	J201	JFET transistor, N-channel	*Alternate MMBFJ201 (SMD)
VOLUME	A100K	16mm right-angle PCB mount pot	
DRIVE	A1M	16mm right-angle PCB mount pot	
TREBLE	A250K	16mm right-angle PCB mount pot	
BASS	B2M	16mm right-angle PCB mount pot	
TRIM1	50K	Trim potentiometer	3362P-style
TRIM2	50K	Trim potentiometer	3362P-style
TRIM3	50K	Trim potentiometer	3362P-style


**NOTE**

C10 was only populated in the first 100 units.  
Newer units omit this capacitor.

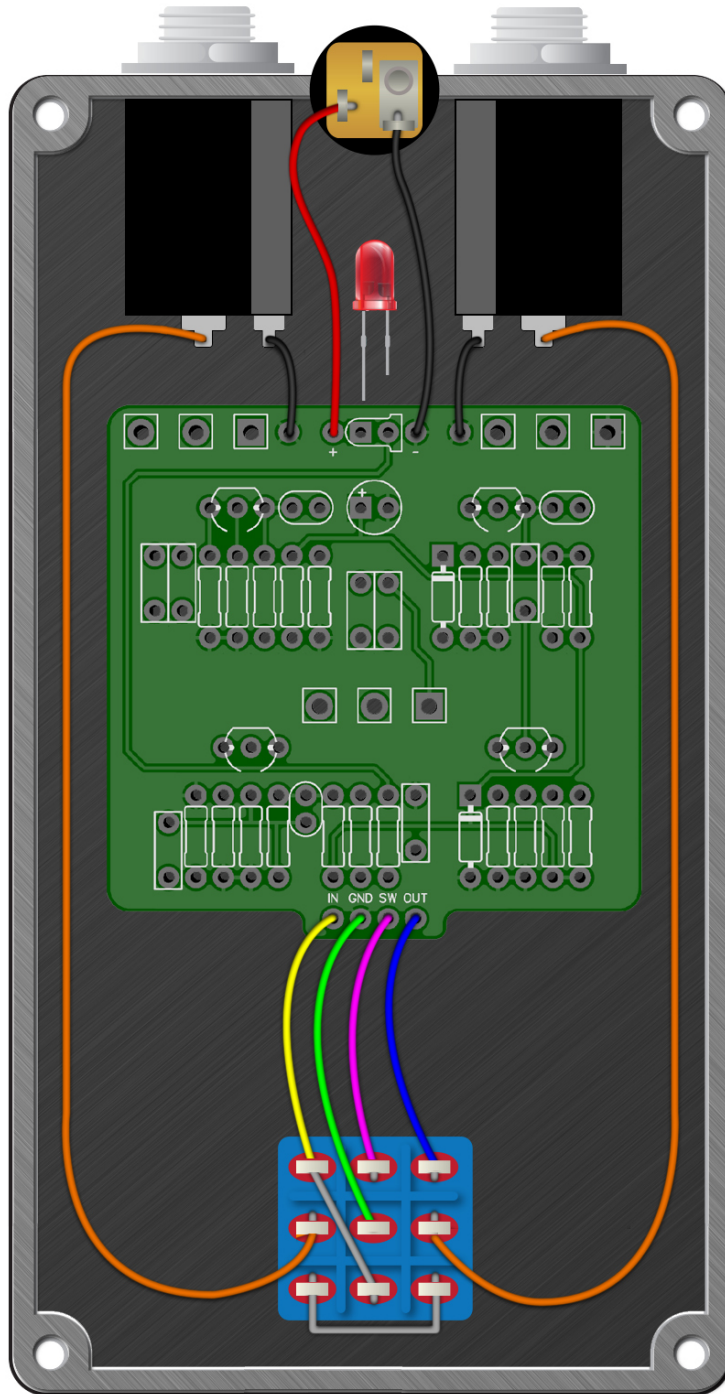


Adjust TRIM1 to 2KΩ  
Adjust TRIM2 for 4.0V on Drain of Q2  
Adjust TRIM3 for 4.0V on Drain of Q3



# Son of Ben Preamp

Wiring Diagram



# Son of Ben Preamp

Drill Template  
125B Enclosure

