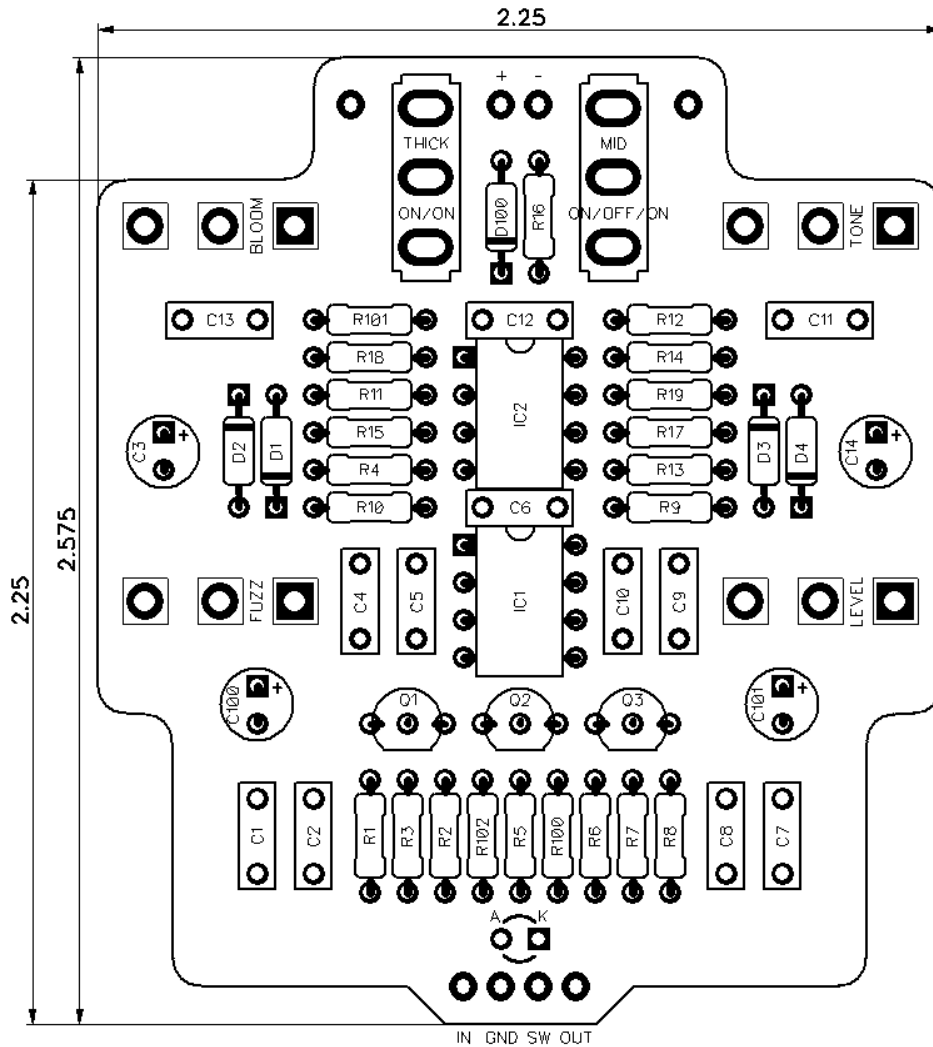




PedalPCB

Mouton Fuzz

Revised 8/12/20



CONTROLS AND FEATURES

- Tone
- Bloom
- Level
- Fuzz

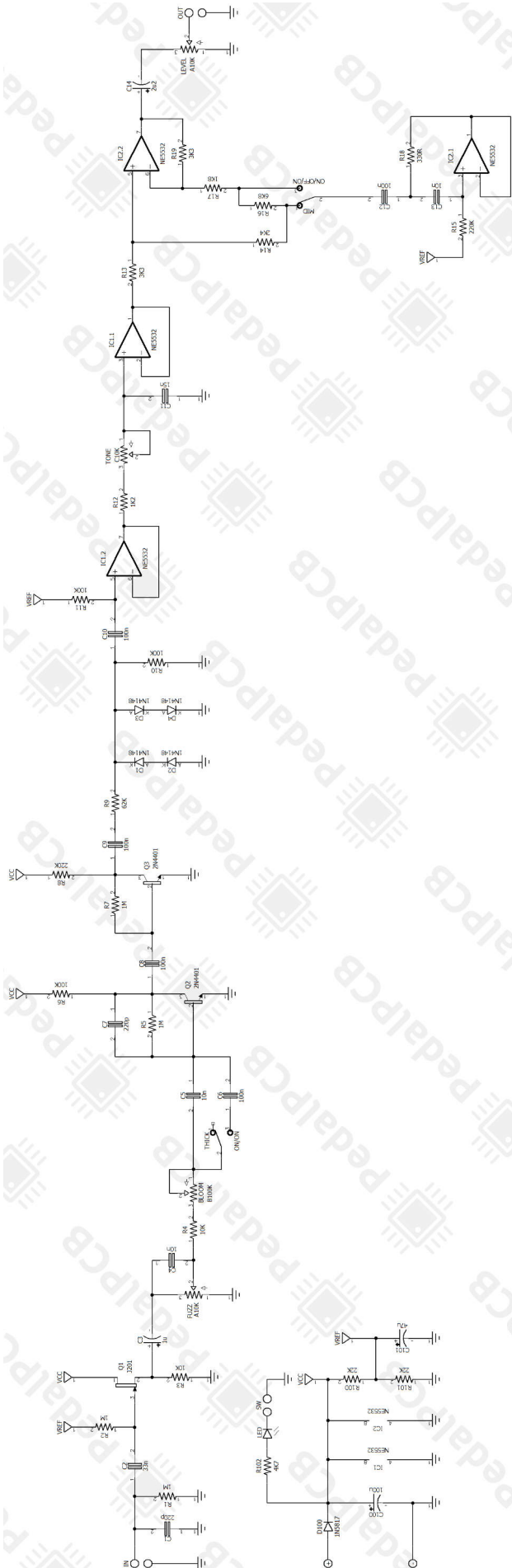
- Mid (Toggle Switch)
- Thick (Toggle Switch)

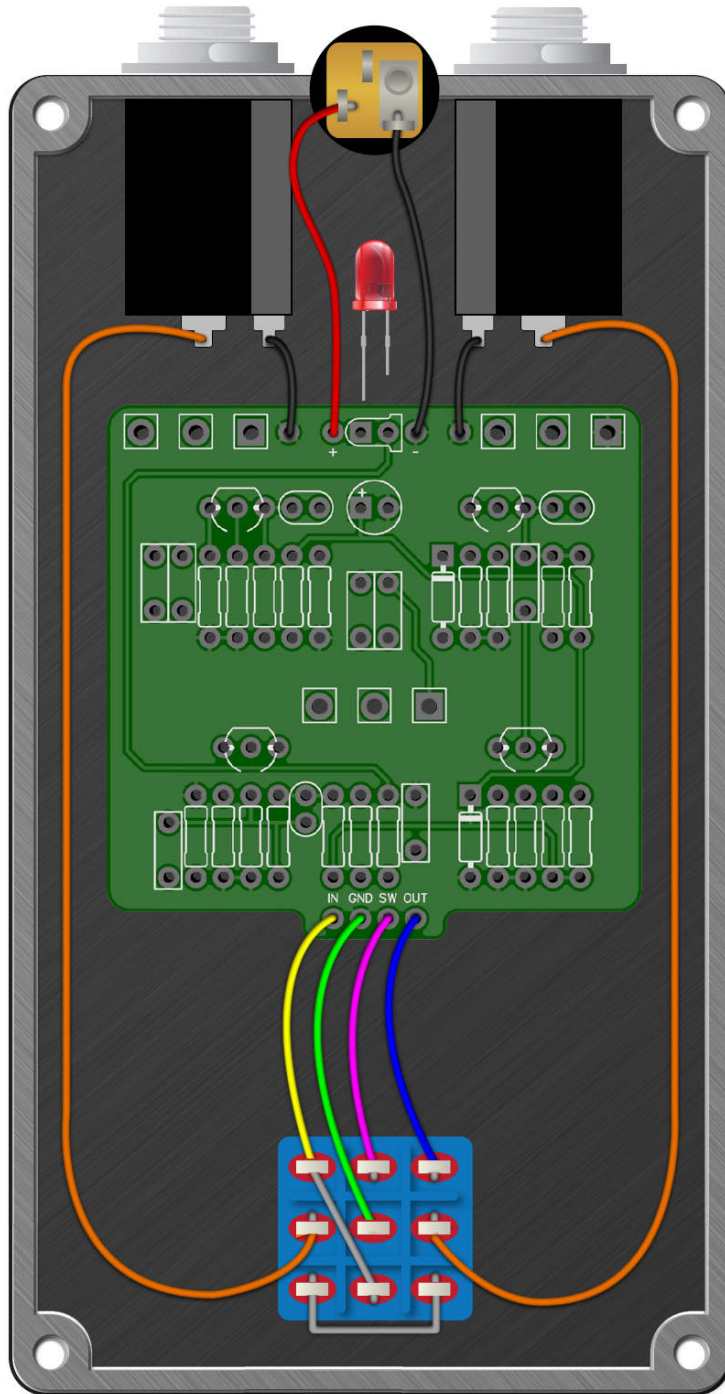
All trademarks and registered trademarks are the property of their respective owners. The company, product, and service names used in this web site are for identification purposes only. Use of these names, logos, and brands does not imply endorsement.

LOCATION	VALUE	TYPE	NOTES
R1	1M	Resistor, 1/4W	
R2	1M	Resistor, 1/4W	
R3	10K	Resistor, 1/4W	
R4	10K	Resistor, 1/4W	
R5	1M	Resistor, 1/4W	
R6	100K	Resistor, 1/4W	
R7	1M	Resistor, 1/4W	
R8	220K	Resistor, 1/4W	
R9	62K	Resistor, 1/4W	
R10	100K	Resistor, 1/4W	
R11	100K	Resistor, 1/4W	
R12	1K2	Resistor, 1/4W	
R13	3K3	Resistor, 1/4W	
R14	2K4	Resistor, 1/4W	
R15	220K	Resistor, 1/4W	
R16	6K8	Resistor, 1/4W	
R17	1K8	Resistor, 1/4W	
R18	330R	Resistor, 1/4W	
R19	3K3	Resistor, 1/4W	
R100	22K	Resistor, 1/4W	
R101	22K	Resistor, 1/4W	
R102	4K7	Resistor, 1/4W	
C1	220p	Ceramic capacitor	
C2	33n	Film capacitor, 7.2 x 2.5mm	
C3	1u	Electrolytic capacitor, 5mm	
C4	10n	Film capacitor, 7.2 x 2.5mm	
C5	10n	Film capacitor, 7.2 x 2.5mm	
C6	100n	Film capacitor, 7.2 x 2.5mm	
C7	220p	Ceramic capacitor	
C8	100n	Film capacitor, 7.2 x 2.5mm	
C9	100n	Film capacitor, 7.2 x 2.5mm	
C10	100n	Film capacitor, 7.2 x 2.5mm	
C11	15n	Film capacitor, 7.2 x 2.5mm	
C12	100n	Film capacitor, 7.2 x 2.5mm	
C13	10n	Film capacitor, 7.2 x 2.5mm	
C14	2u2	Electrolytic capacitor, 5mm	
C100	100u	Electrolytic capacitor, 5mm	
C101	47u	Electrolytic capacitor, 5mm	
D1	1N4148	Signal diode, DO-35	
D2	1N4148	Signal diode, DO-35	
D3	1N4148	Signal diode, DO-35	
D4	1N4148	Signal diode, DO-35	
D100	1N5817	Schottky diode, DO-41	

Mouton Fuzz

Schematic Diagram





Mouton Fuzz

Drill Template
125B enclosure

