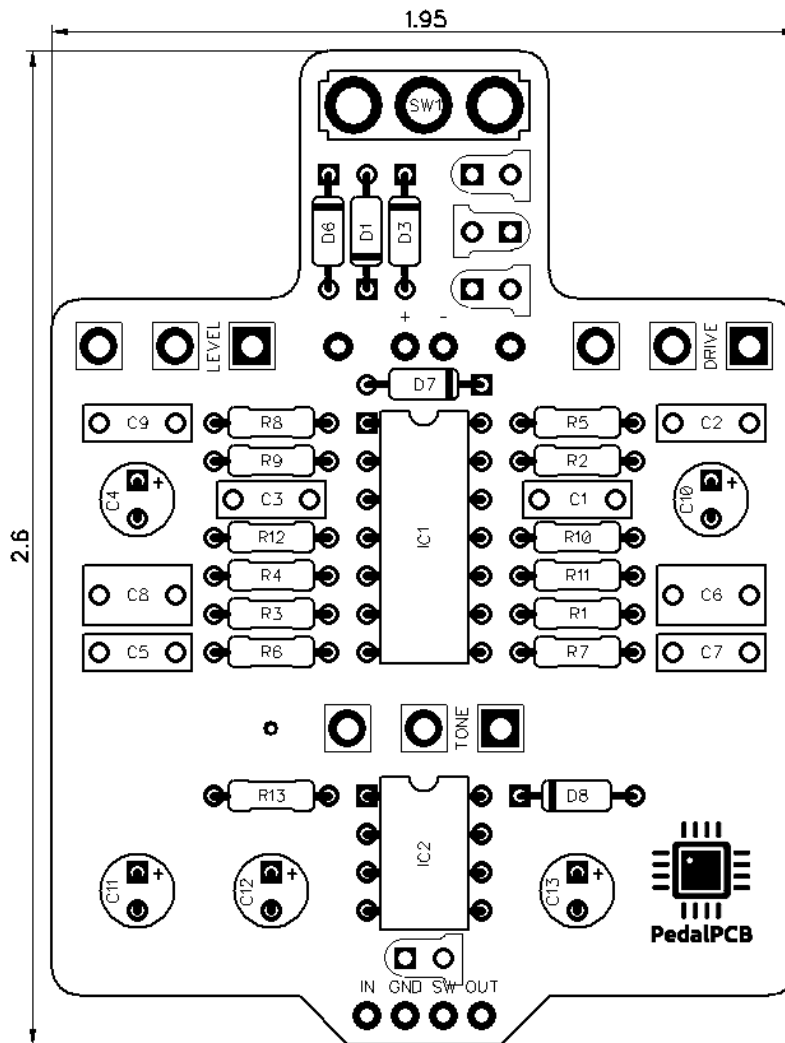




PedalPCB

King Midas Overdrive

Revision 06.23.18



Controls

- **Level** - Controls the overall output volume
- **Tone** - Adjusts the tone from warm to bright
- **Drive** - Controls the amount of overdrive
- **Power (toggle switch)** - Toggles between Hi and Lo power mode

All trademarks and registered trademarks are the property of their respective owners. The company, product, and service names used in this web site are for identification purposes only. Use of these names, logos, and brands does not imply endorsement.

RESISTORS

R1 1M
R2 1M
R3 470R
R4 18K
R5 10K
R6 4K7
R7 22K
R8 22K
R9 18K
R10 390R
R11 4K7
R12 10K
R13 22R

POTENTIOMETERS

DRIVE A1M
TONE B10K
LEVEL A100K

CAPACITORS

C1 100n
C2 100p
C3 100n
C4 2u2
C5 120p
C6 470n
C7 39n
C8 470n
C9 120p
C10 1u
C11 100u
C12 10u
C13 100u

SWITCHES

SW1 (Power) SPDT Toggle

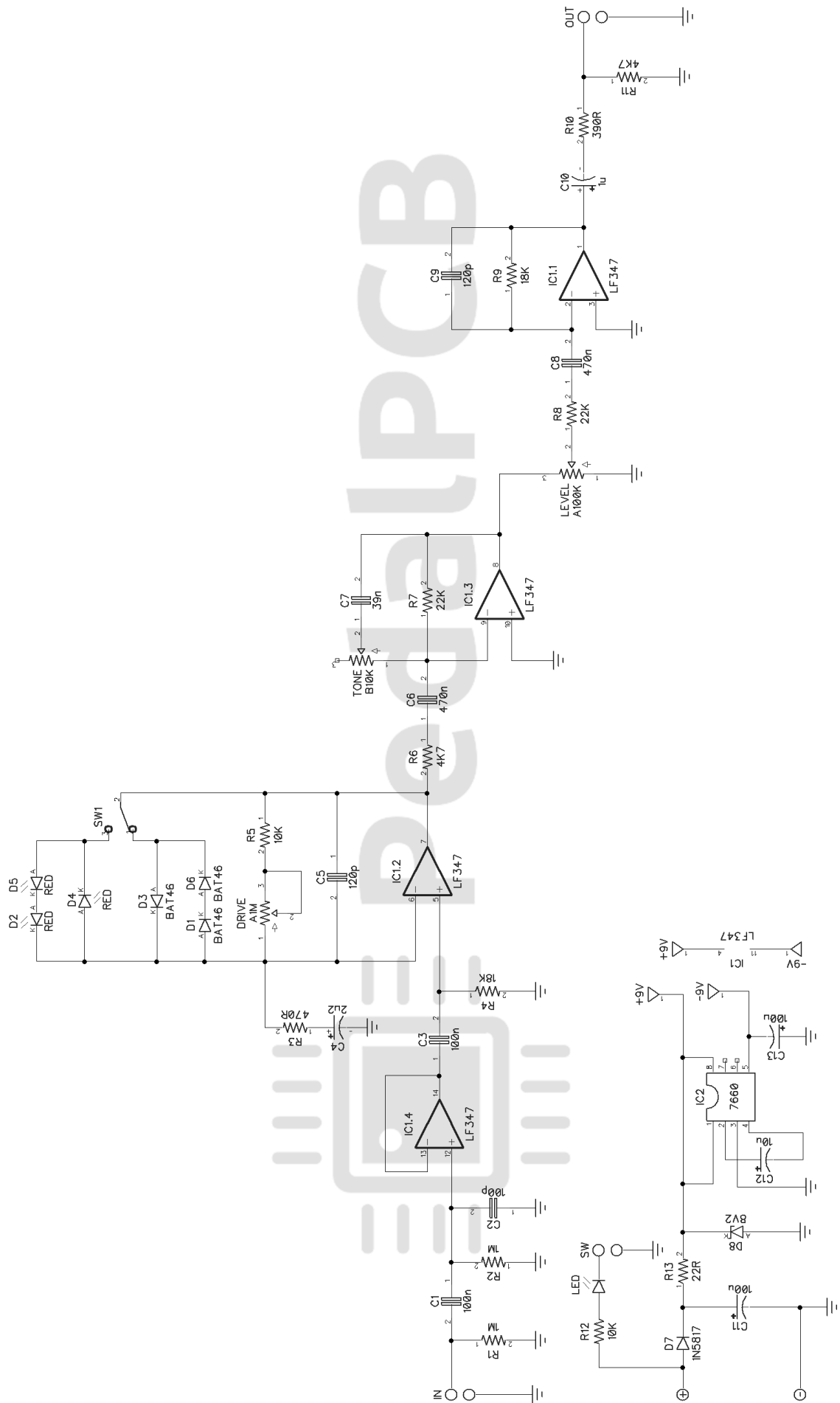
INTEGRATED CIRCUITS

IC1 LF347
IC2 ICL7660SCPA

DIODES

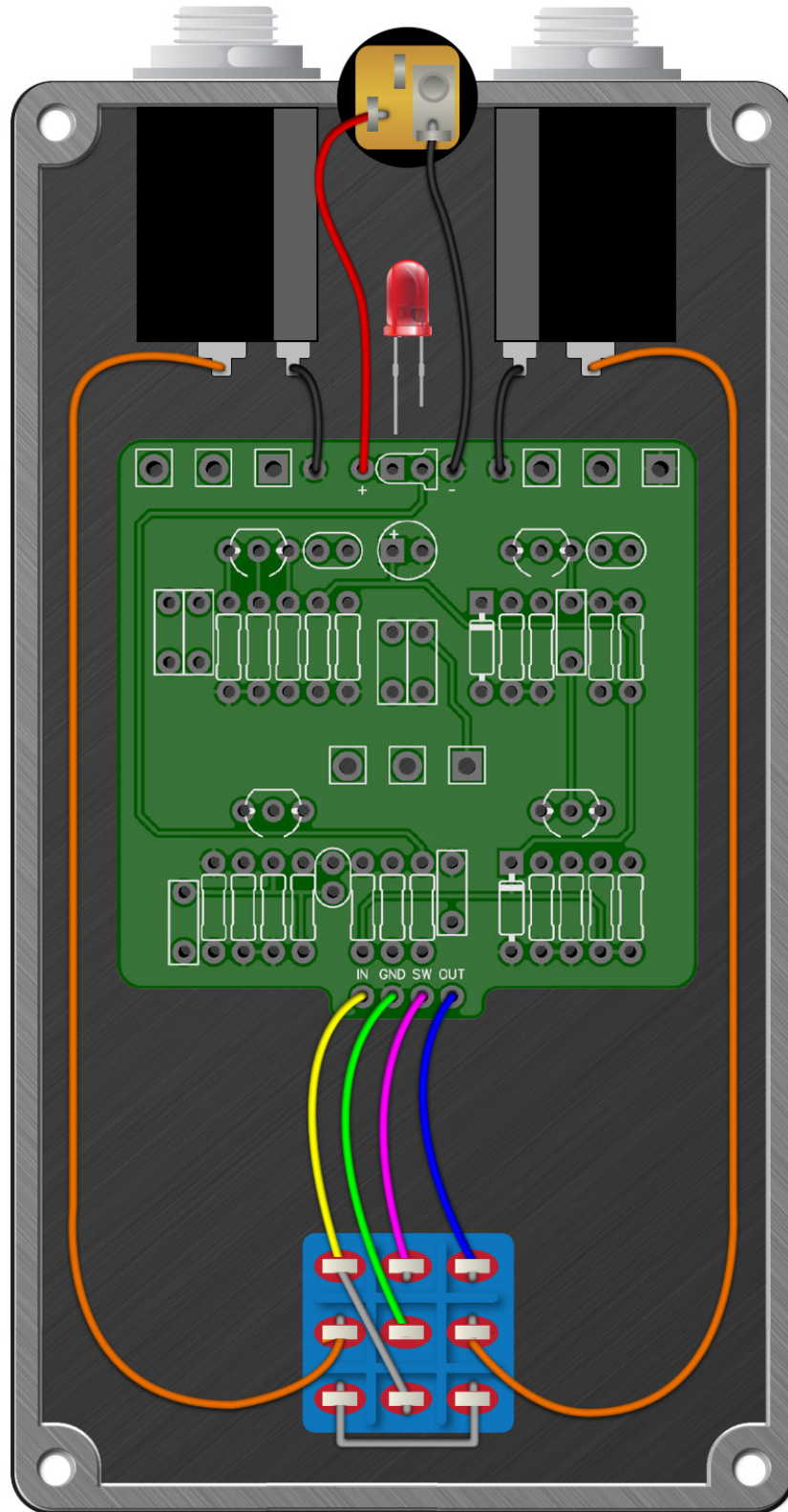
D1 BAT46
D2 RED
D3 BAT46
D4 RED
D5 RED
D6 BAT46
D7 1N5817
D8 8V2

King Midas Overdrive



King Midas Overdrive

Wiring Diagram



King Midas Overdrive

Drill Template

125B enclosure with top mounted jacks

