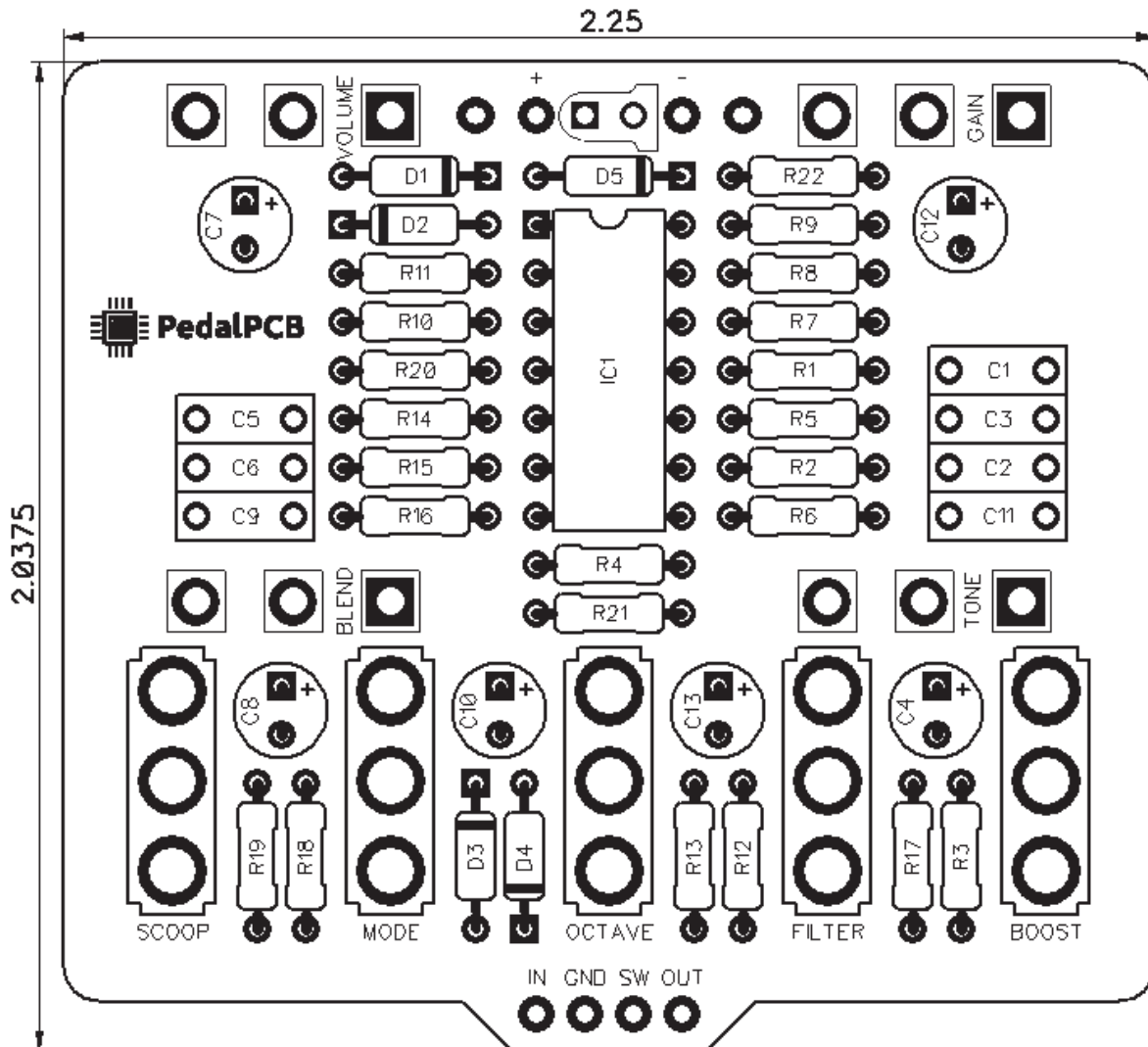




# PedalPCB

## InfiniDrive

Revision 01.30.19



### Controls

- Parameter 1
- Parameter 2
- Parameter 3
- Volume
- Mix
- Mode (Rotary Switch)

All trademarks and registered trademarks are the property of their respective owners. The company, product, and service names used in this web site are for identification purposes only. Use of these names, logos, and brands does not imply endorsement.

**RESISTORS (1/4W)**

R1	330K
R2	100K
R3	10M
R4	10M
R5	1M
R6	220K
R7	220K
R8	100K
R9	100K
R10	10K
R11	10K
R12	10K
R13	5K
R14	100K
R15	1K
R16	1K
R17	3K9
R18	10K
R19	1K
R20	10K
R21	10K
R22	4K7

**CAPACITORS**

C1	10n
C2	1n
C3	1n
C4	1u
C5	10n
C6	470p*
C7	10u
C8	10u
C9	47n
C10	1u
C11	100n
C12	10u
C13	10u

\*Original used 47pF for C6 -  
Increased to 470pF to prevent oscillation in some settings

**SWITCHES**

MODE	SPDT (On/Off/On)*
BOOST	SPDT (On/On)
FILTER	SPDT (On/On)
OCTAVE	SPDT (On/On)
SCOOP	SPDT (On/On)

\*Original used SPDT (On/On) for MODE switch. - Three-position SPDT( On/Off/On) allows Soft, Hard, and No clipping diodes

**INTEGRATED CIRCUITS**

IC1 TL074

**DIODES**

D1	1N914
D2	1N914
D3	1N914
D4	1N914
D5	1N5817

**POTENTIOMETERS**

VOLUME	A100K
GAIN	B500K
TONE	B10K
BLEND	A100K*

\*Original used A50K Blend pot -  
Increased to A100K for better separation of clean/dirt signals

# InfiniDrive

