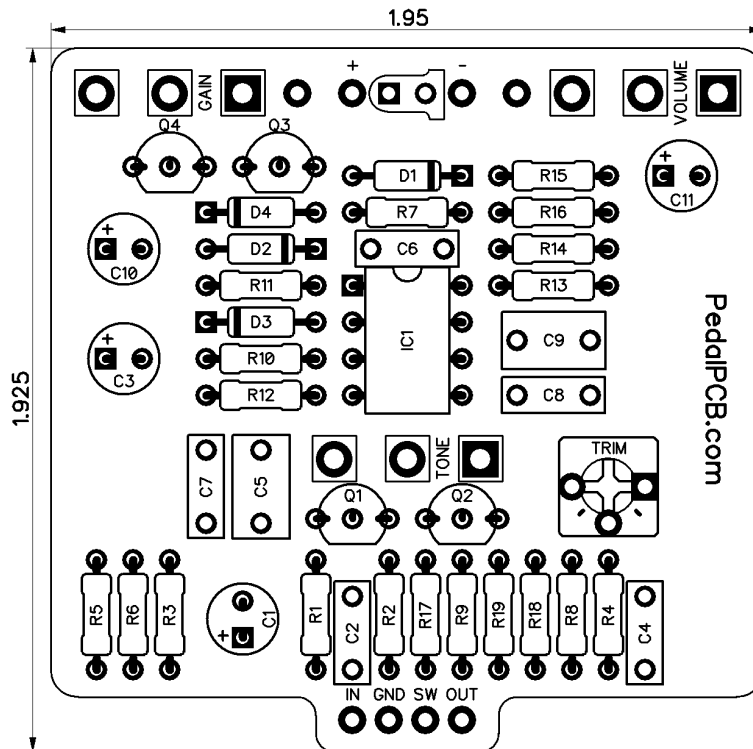


Grover Drive

Revision 02.03.18



Resistors

R1	33K
R2	33K
R3	100K
R4	470
R5	1K
R6	1K
R7	330
R8	120K
R9	75K
R10	470K
R11	220K
R12	4K7
R13	10K
R14	1K
R15	10K
R16	10K
R17	4K7
R18	1K
R19	6.2K

Capacitors

C1	1uF
C2	100nF
C3	22uF
C4	100nF
C5	470nF
C6	100pF
C7	100nF
C8	3.3nF
C9	470nF
C10	100uF
C11	47uF

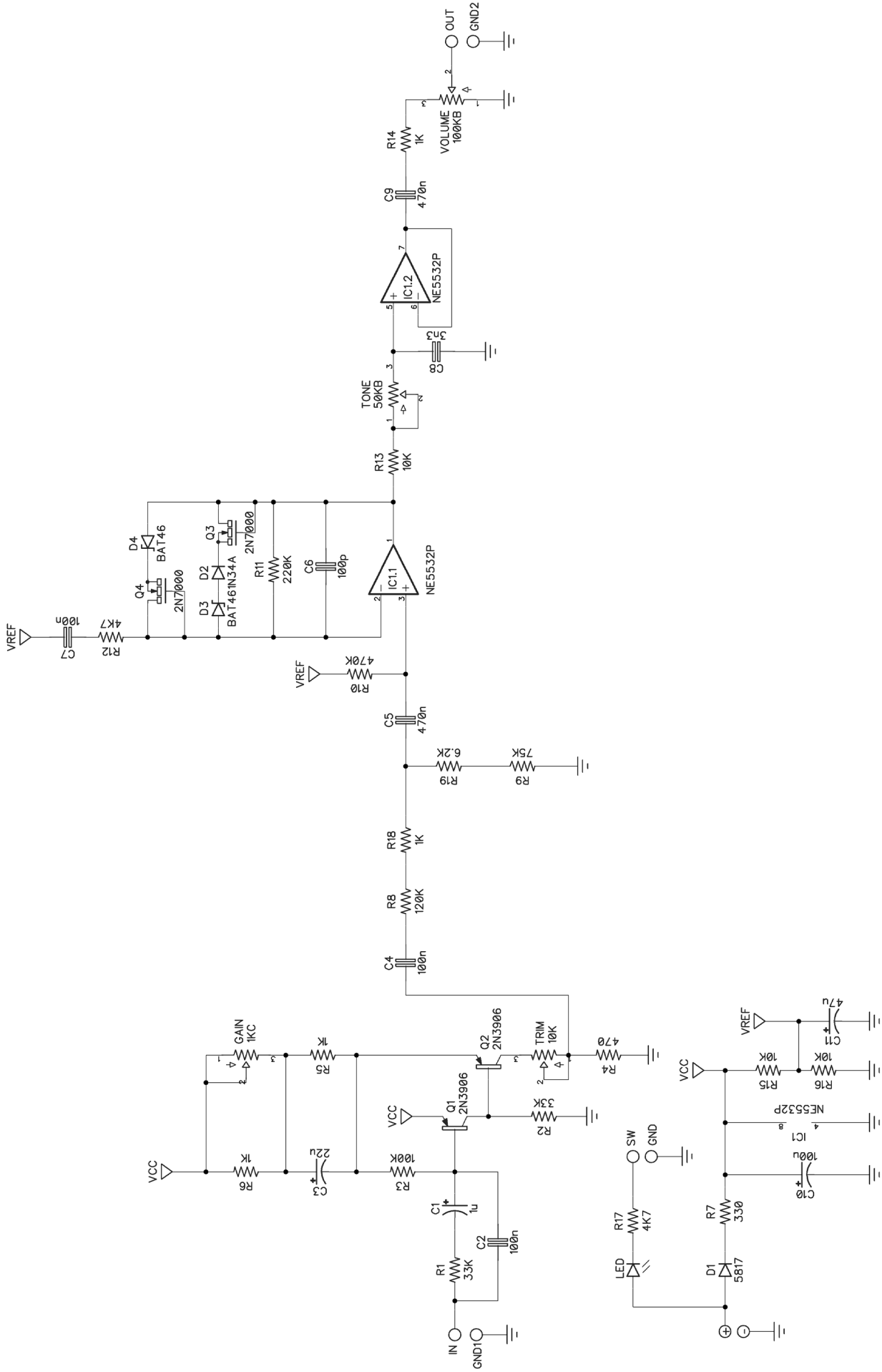
Semiconductors

D1	1N5817
D2	1N34A
D3	BAT46
D4	BAT46
IC1	NE5532P
Q1	2N3906
Q2	2N3906
Q3	2N7000
Q4	2N7000

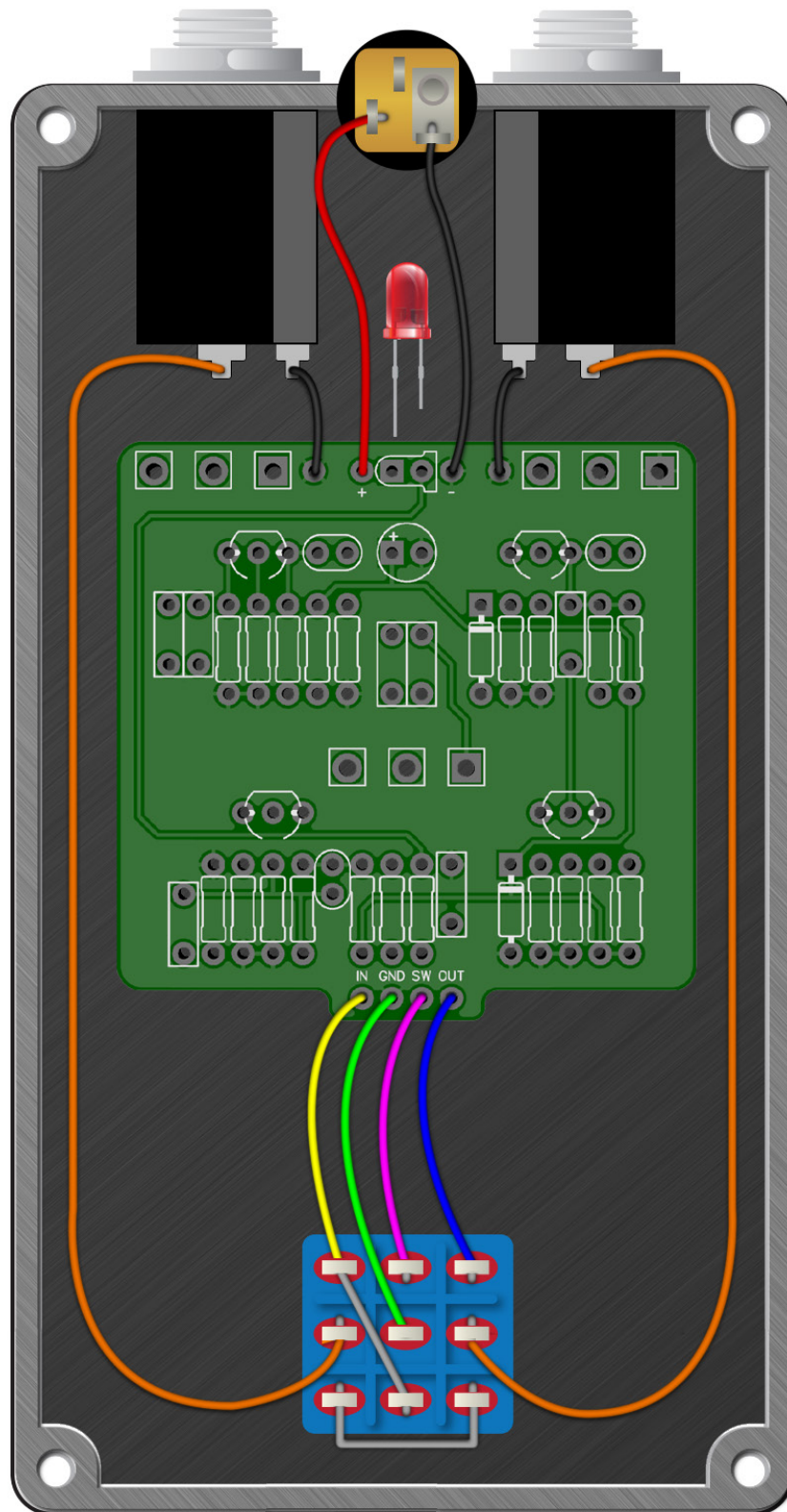
Potentiometers

GAIN	C1K
TONE	B50K
VOLUME	B100K
TRIM	10K

Grover Drive

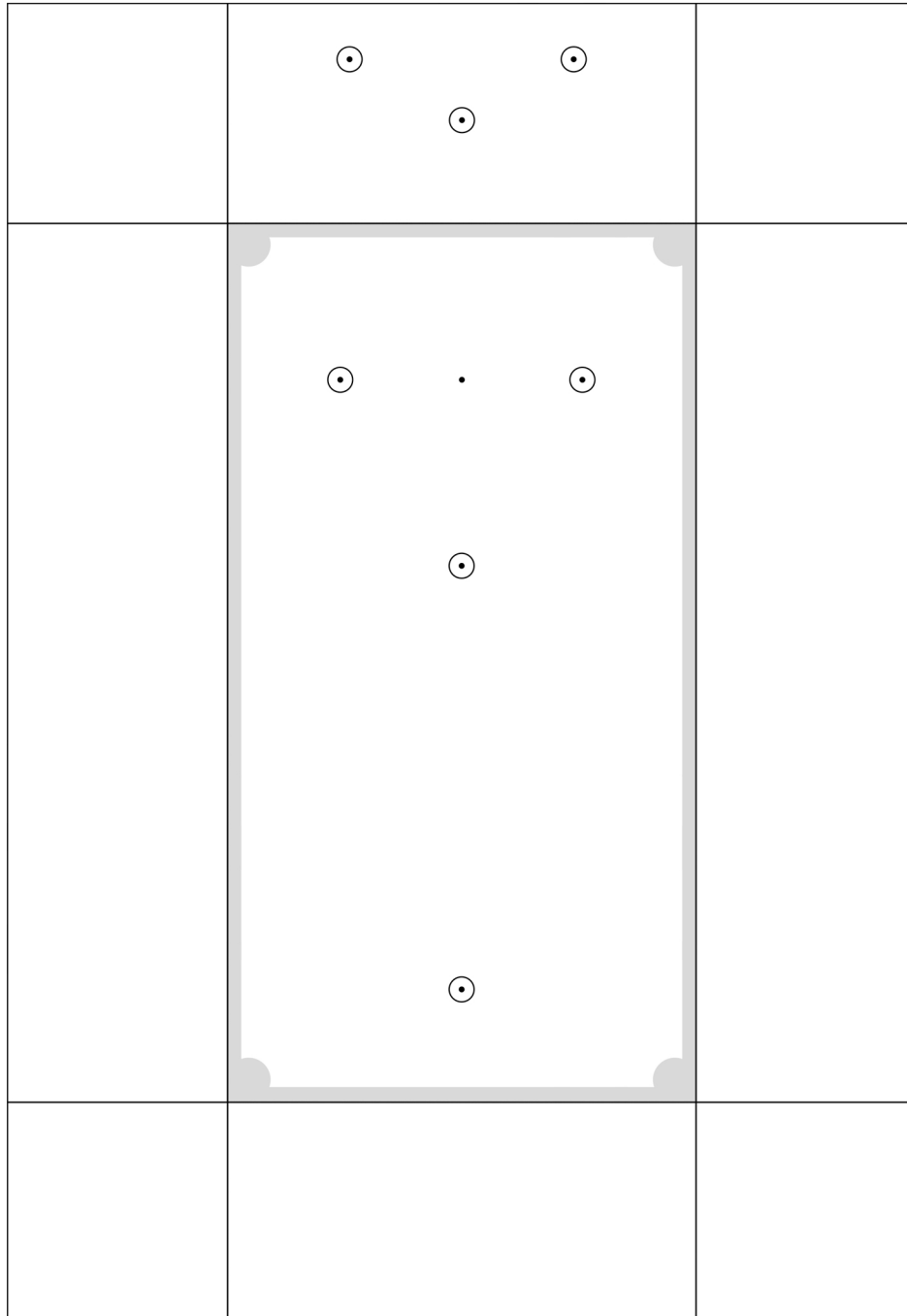


Wiring Diagram



Drill Template

4S125B enclosure with top mounted jacks



Bill of Materials

Resistors (1/4W)

1 x 330
1 x 470
4 x 1K
2 x 4K7
1 x 6.2K
3 x 10K
2 x 33K
1 x 75K
1 x 100K
1 x 120K
1 x 220K
1 x 470K

Capacitors

1 x 100pF
1 x 3.3nF
3 x 100nF
2 x 470nF
1 x 1uF
1 x 22uF
1 x 47uF
1 x 100uF

Semiconductors

1 x NE5532P

2 x 2N3906
2 x 2N7000

1 x 1N5817
1 x 1N34A
2 x BAT46

1 x 3mm LED

Potentiometers

1 x C1K
1 x B50K
1 x B100K
1 x 10K TRIM