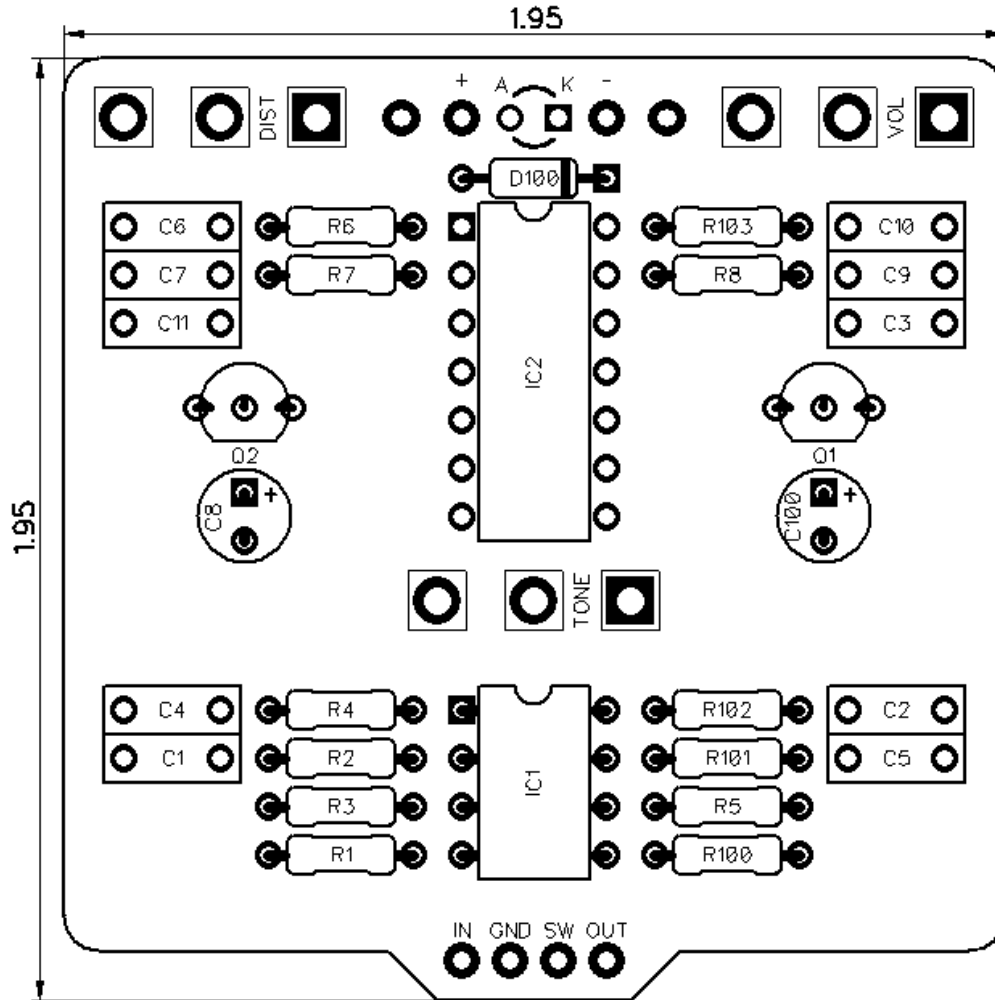


# PedalPCB

## Graphite Distortion

Revision 02.16.20



### Controls

- **Distortion**
- **Tone**
- **Volume**

All trademarks and registered trademarks are the property of their respective owners. The company, product, and service names used in this web site are for identification purposes only. Use of these names, logos, and brands does not imply endorsement.

# Graphite Distortion

## Parts List

### RESISTORS (1/4W)

|      |      |
|------|------|
| R1   | 1M   |
| R2   | 14K7 |
| R3   | 470K |
| R4   | 4K7  |
| R5   | 200K |
| R6   | 470K |
| R7   | 1M   |
| R8   | 10K  |
| R100 | 4K7  |
| R101 | 1M   |
| R102 | 1M   |
| R103 | 100R |

### CAPACITORS

|      |      |
|------|------|
| C1   | 2n2  |
| C2   | 100n |
| C3   | 100p |
| C4   | 47n  |
| C5   | 10n  |
| C6   | 100p |
| C7   | 100p |
| C8   | 4u7  |
| C9   | 22n  |
| C10  | 15p  |
| C11  | 47n  |
| C100 | 100u |

### INTEGRATED CIRCUITS

|     |           |
|-----|-----------|
| IC1 | TL051     |
| IC2 | CD4069UBE |

### TRANSISTORS

|    |        |
|----|--------|
| Q1 | 2N3819 |
| Q2 | 2N3819 |

### DIODES

|      |        |
|------|--------|
| D100 | 1N4004 |
|------|--------|

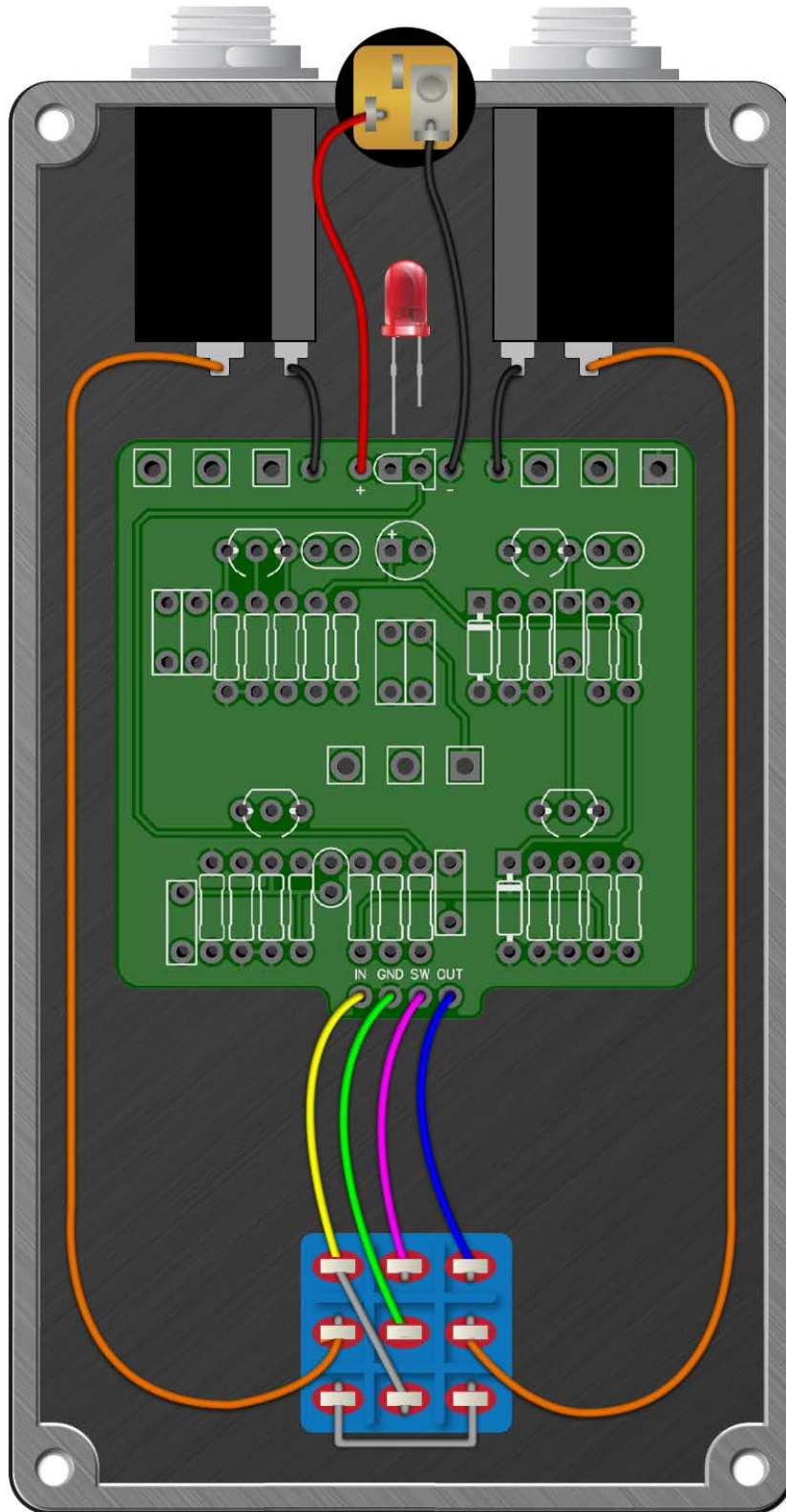
### POTENTIOMETERS

|      |      |
|------|------|
| DIST | A1M  |
| TONE | A50K |
| VOL  | A50K |



# Graphite Distortion

Wiring Diagram



# Graphite Distortion

Drill Template  
125B enclosure with top mounted jacks

