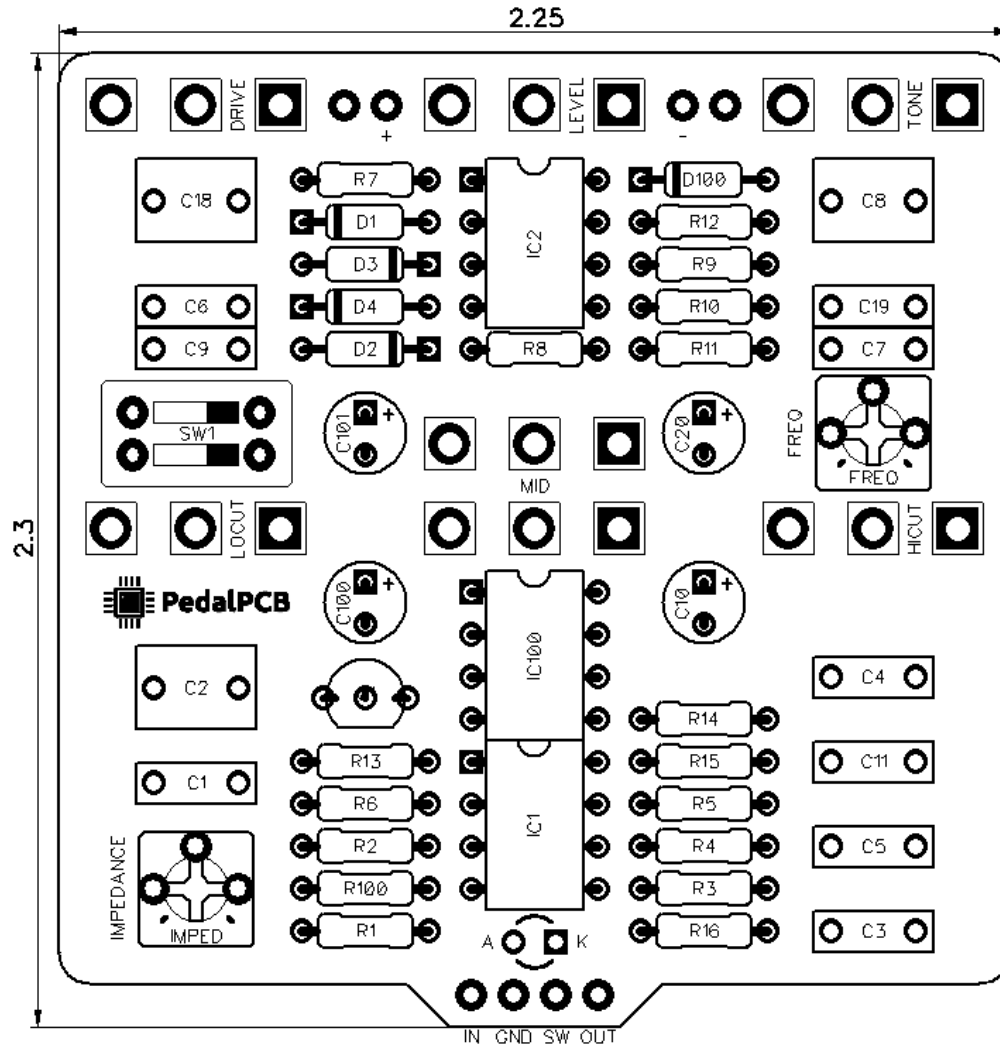




PedalPCB

Frost Drive

Revision 09.01.19



Controls

- Drive
- Level
- Tone
- Lo-cut
- Mid
- Hi-cut
- Impedance (trim pot)
- Frequency (trim pot)

All trademarks and registered trademarks are the property of their respective owners. The company, product, and service names used in this web site are for identification purposes only. Use of these names, logos, and brands does not imply endorsement.

Frost Drive

Parts List

RESISTORS (1/4W)

R1 1K
R2 100K
R3 100K
R4 1K
R5 1K
R6 LOW*
R7 MIN*
R8 MAX*
R9 VOL*
R10 100K
R11 100Ω
R12 1K
R13 470K
R14 10K
R15 10K
R16 100Ω
R100 4K7

CAPACITORS

C1 220n
C2 1u
C3 47n
C4 120n
C5 220n
C6 33p
C7 220n
C8 1u
C9 100n
C10 22u
C11 100n
C18 MAX*
C19 HI*
C20 100u
C100 10u
C101 47u

TRANSISTORS

Q1 MPSA18

INTEGRATED CIRCUITS

IC1 JRC4558
IC2 JRC4558
IC100 TC1044SCPA

DIODES

D1 1N914
D2 1N914
D3 1N914
D4 1N914
D100 1N5817

POTENTIOMETERS

LEVEL A100K
LOCUT C10K
MID C10K
TONE W20K
DRIVE D1M
HICUT C10K

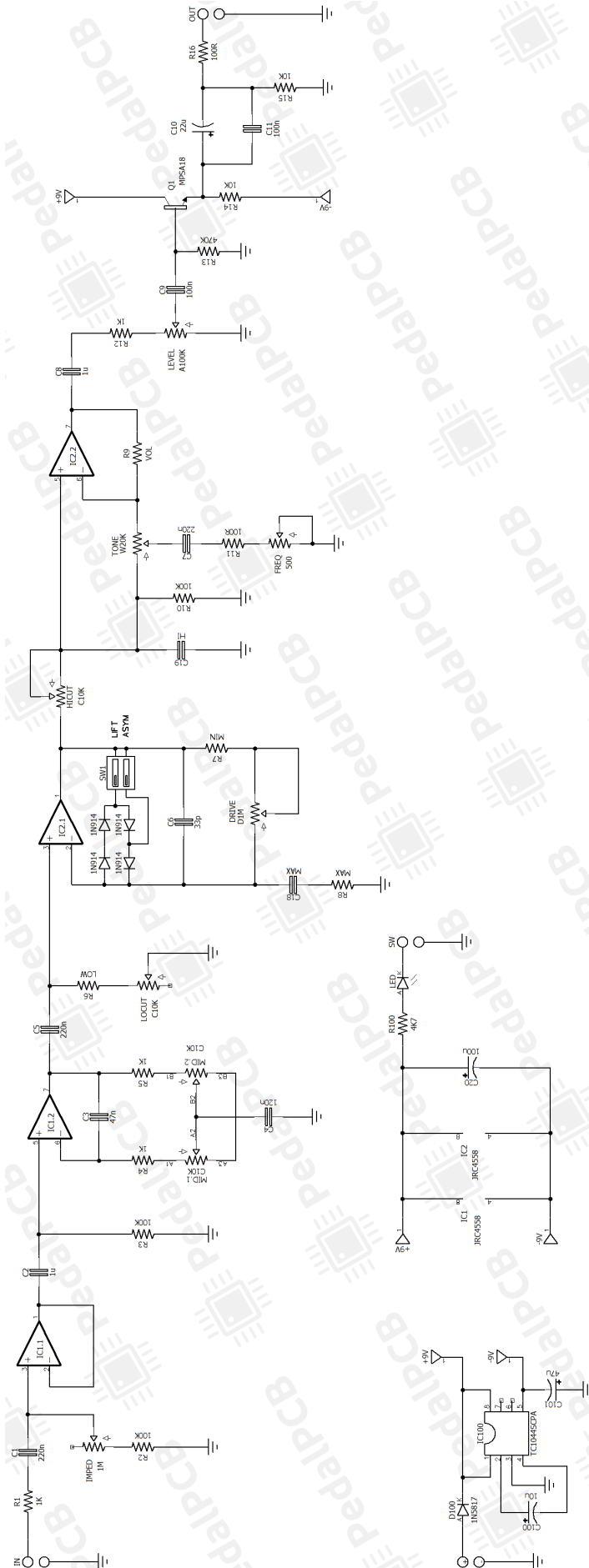
TRIM POTS

FREQ 500R TRIM
IMPED 1M TRIM

DIP SWITCHES

SW1 DIP2 Dip Switch

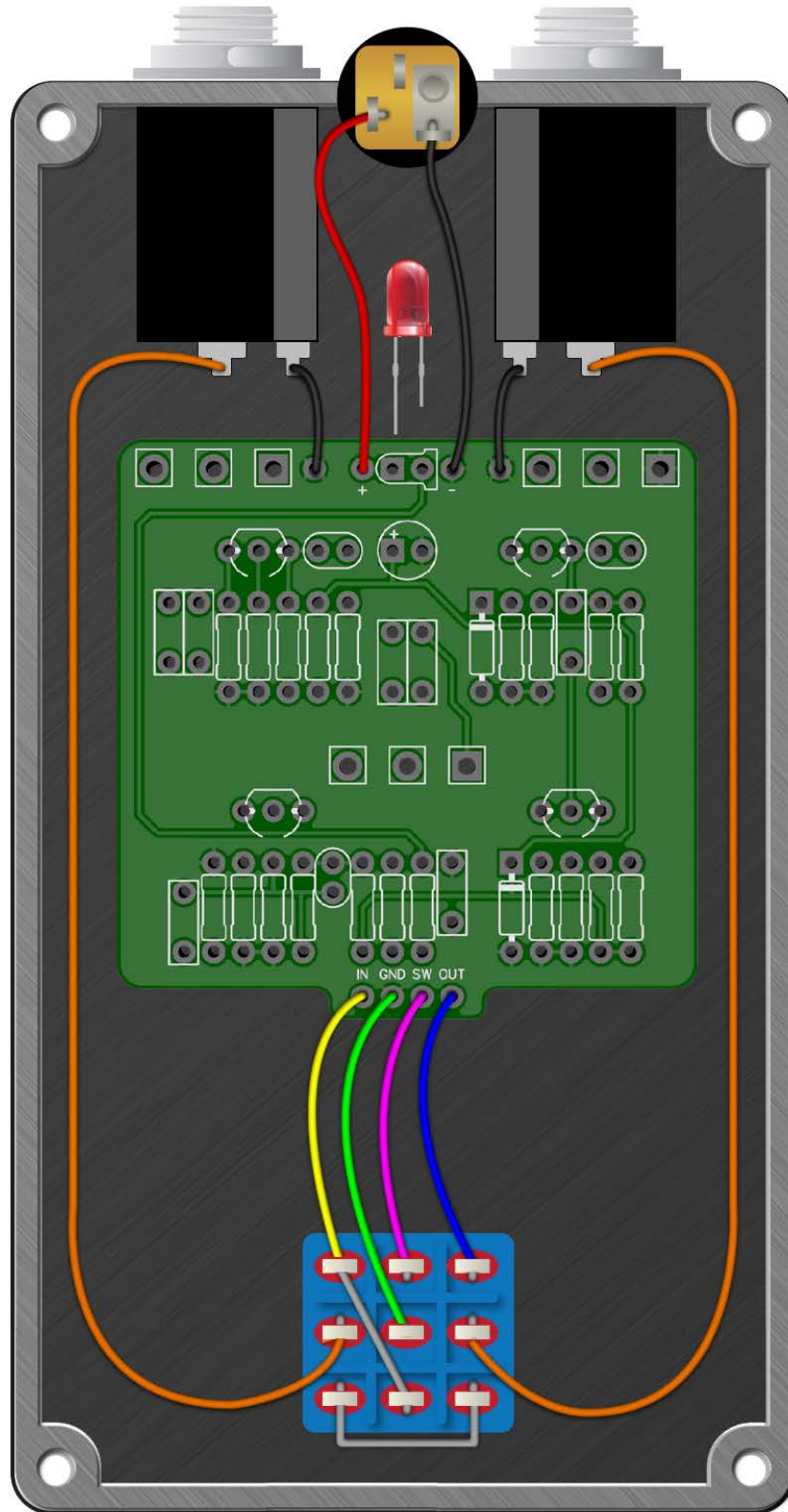
Frost Drive



Mint	LOW = 1K; VOL = 2.2K; MIN = MAX = 4.7K
Resistors	MAX = 0.22uF; HI = 47nF
Capacitors	
Sherbet	LOW = 470; VOL = 1K; MIN = MAX = 2.2K
Resistors	MAX = 0.47uF; HI = 0.1uF
Capacitors	

Frost Drive

Wiring Diagram



Frost Drive

Drill Template
125B enclosure with top mounted jacks

