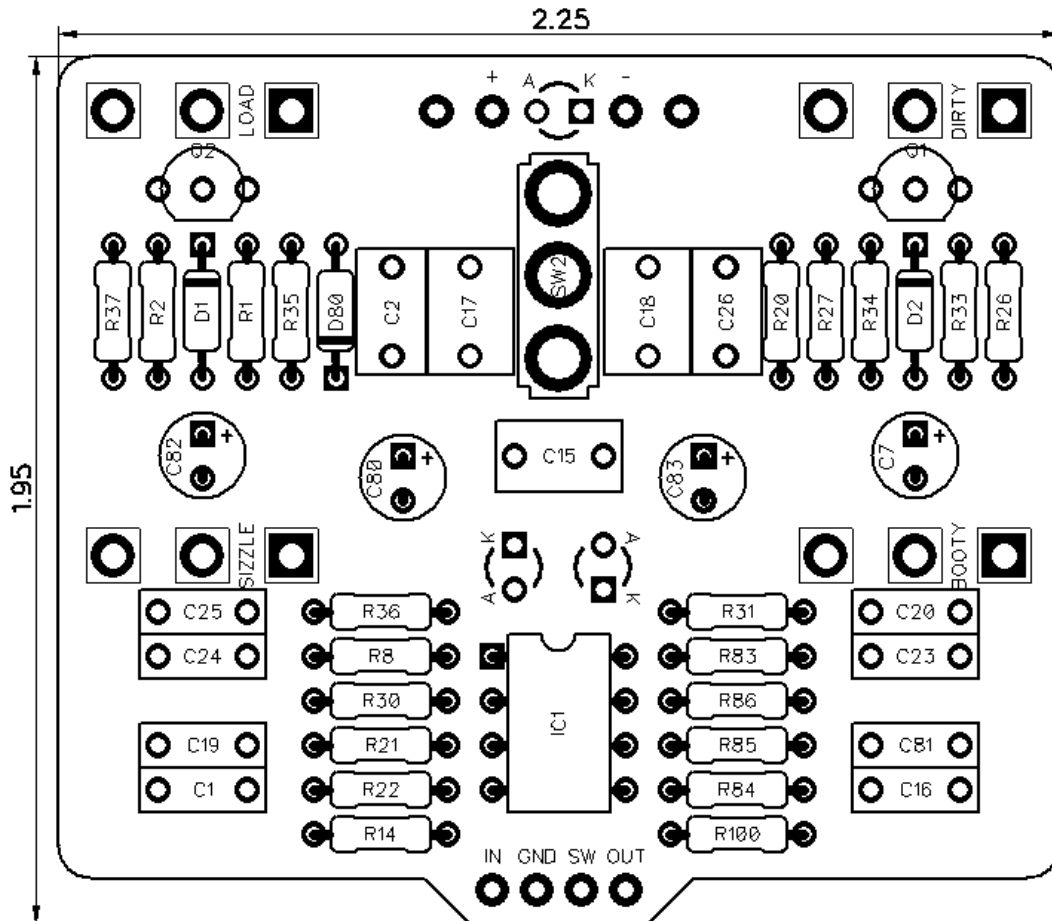




PedalPCB

Face Melter

Revision 06.07.19



Controls

- **Load** - Volume
- **Dirty** - Drive
- **Sizzle** - Treble
- **Booty** - Bass
- **Moist / Gushing** (Toggle Switch)

All trademarks and registered trademarks are the property of their respective owners. The company, product, and service names used in this web site are for identification purposes only. Use of these names, logos, and brands does not imply endorsement.

Face Melter

Parts List

RESISTORS (1/4W)

R1 2K7
R2 4M7
R8 220R
R14 1M
R20 4K7
R21 1K
R22 470K
R26 1K
R27 1M
R30 2K7
R31 2K4
R33 4K7
R34 4K7
R35 4K7
R36 10K
R37 10K
R83 10K
R84 10K
R85 10K
R86 10K
R100 4K7

CAPACITORS

C1 22n
C2 470n
C7 10u
C15 470n
C16 220p
C17 1u
C18 1u
C19 1n
C20 100n
C23 100n
C24 100n
C25 3n9
C26 470n
C80 100u
C81 100n
C82 47u
C83 47u

INTEGRATED CIRCUITS

IC1 CA3240EZ

TRANSISTORS

Q1 BS170
Q2 BS170

DIODES

D1 9V1 zener
D2 9V1 zener
D80 1N5817
LED 3mm Red LED
LED3 3mm Red LED
LED4 3mm Red LED

POTENTIOMETERS

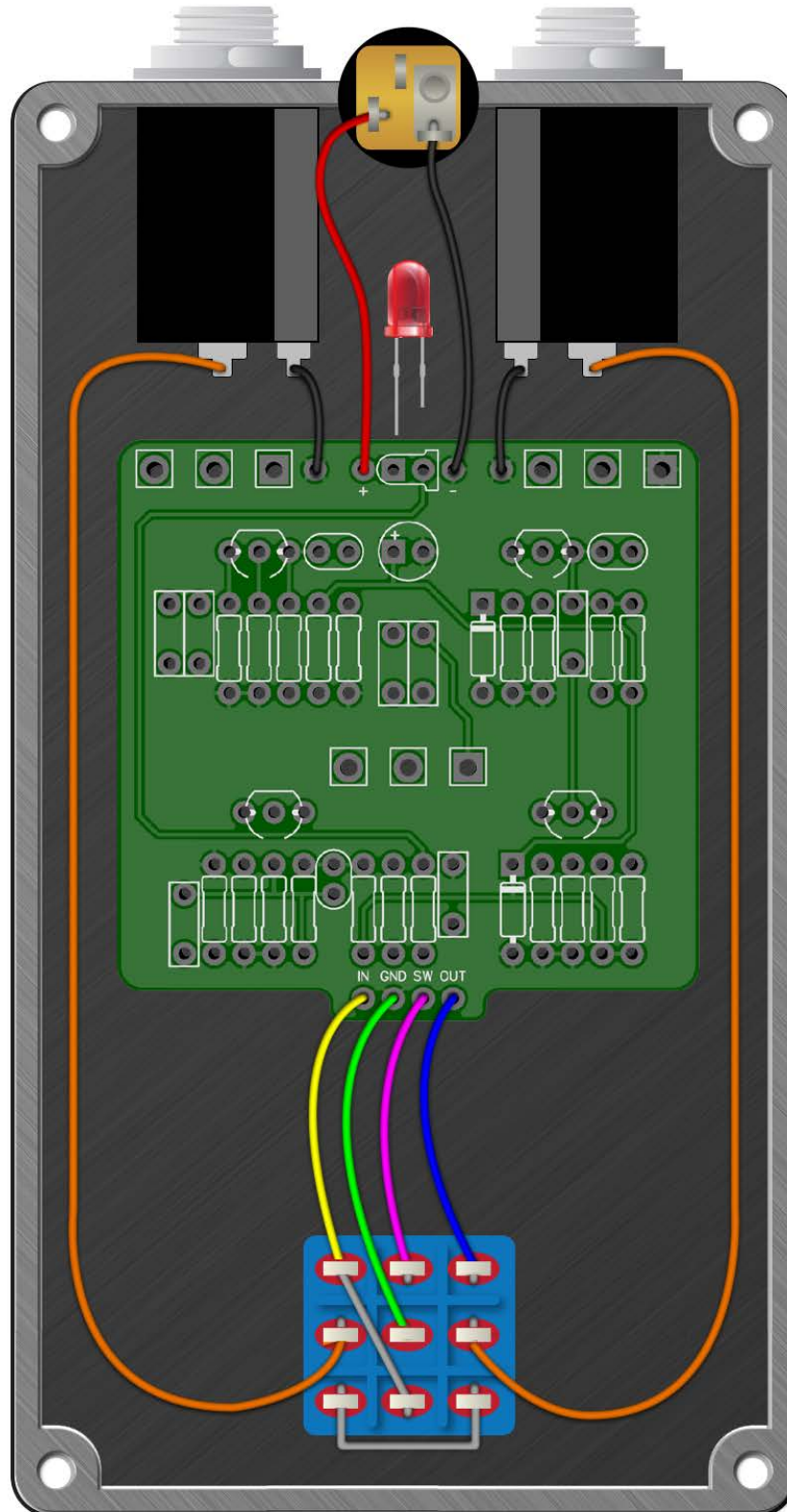
BOOTY C5K
LOAD A100K
DIRTY A500K
SIZZLE A10K

SWITCHES

SW2 SPDT Toggle (On/On)

Face Melter

Wiring Diagram



Face Melter

Drill Template
125B enclosure with top mounted jacks

