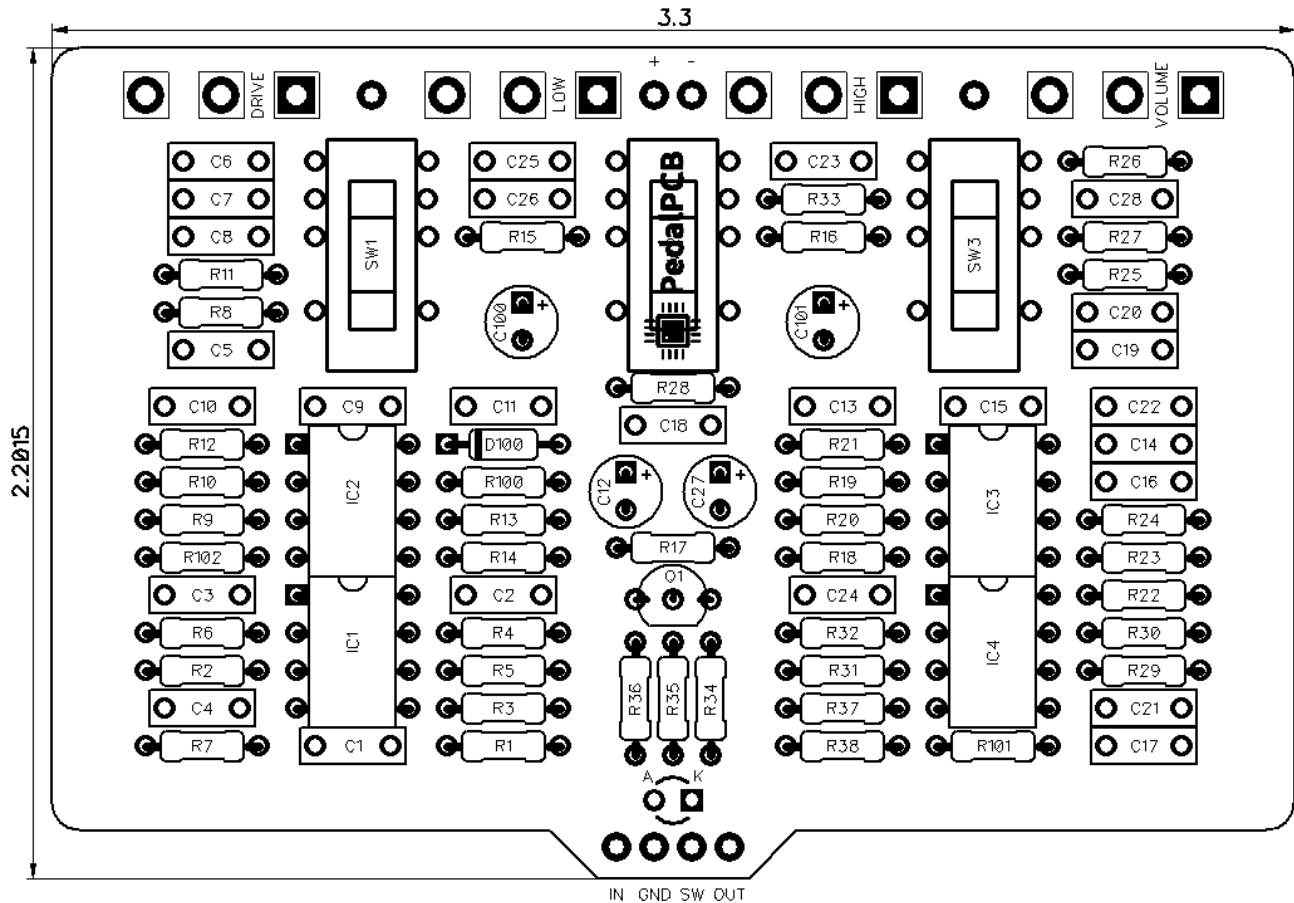


# PedalPCB

## Emu Amp Simulator

Revision 12.29.20



### Controls

- **Volume**
- **High**
- **Low**
- **Drive**
- **Mic Placement (Classic / Center / Off Axis)**
- **Mod (Clean / Hi Gain / Hot Rod)**
- **Preamp Style (Tweed / British / Modern)**

All trademarks and registered trademarks are the property of their respective owners. The company, product, and service names used in this web site are for identification purposes only. Use of these names, logos, and brands does not imply endorsement.

**RESISTORS (1/4W)**

R1 1M  
 R2 10K  
 R3 1M  
 R4 100K  
 R5 22K  
 R6 2K2  
 R7 22K  
 R8 100K  
 R9 3K3  
 R10 22K  
 R11 22K  
 R12 330K  
 R13 330K  
 R14 1K  
 R15 10K  
 R16 1K  
 R17 10K  
 R18 22K  
 R19 22K  
 R20 22K  
 R21 10K  
 R22 33K  
 R23 33K  
 R24 10K  
 R25 6K2  
 R26 22K  
 R27 22K  
 R28 22K  
 R29 100K  
 R30 330K  
 R31 3K3  
 R32 10K  
 R33 10K  
 R34 10K  
 R35 1K  
 R36 10K  
 R37 100K  
 R38 1K  
 R100 4K7  
 R101 10K  
 R102 10K

**CAPACITORS**

C1 22n  
 C2 47n  
 C3 22n  
 C4 22n  
 C5 22n  
 C6 22n  
 C7 2n2  
 C8 10n  
 C9 22n  
 C10 220p  
 C11 220p  
 C12 2u2  
 C13 10n  
 C14 560p  
 C15 47n  
 C16 2n2  
 C17 1n  
 C18 10n  
 C19 4n7  
 C20 22n  
 C21 10n  
 C22 100n  
 C23 10n  
 C24 10n  
 C25 22n  
 C26 22n  
 C27 2u2  
 C28 4n7  
 C100 220u  
 C101 220u

**INTEGRATED CIRCUITS**

IC1 TL072  
 IC2 TL072  
 IC3 TL072  
 IC4 TL072

**TRANSISTORS**

Q1 2N5088

**DIODES**

D100 1N5817

**POTENTIOMETERS**

VOLUME B100K  
 DRIVE B100K  
 HIGH B100K  
 LOW B100K

**SWITCHES**

SW1 2P3T Slide Switch  
 SW2 2P3T Slide Switch  
 SW3 2P3T Slide Switch

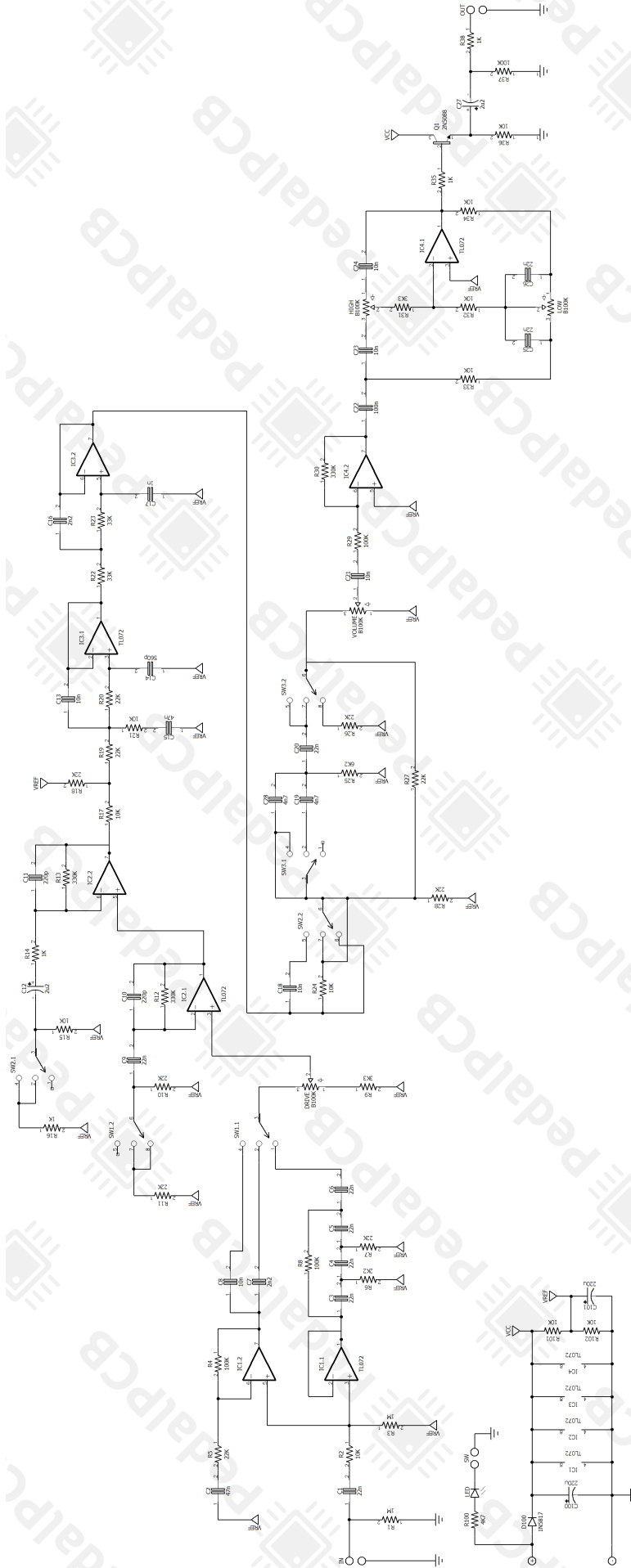
**PIN HEADERS**

6 x 5-pin 2.54mm Male Pinheader


**NOTE**

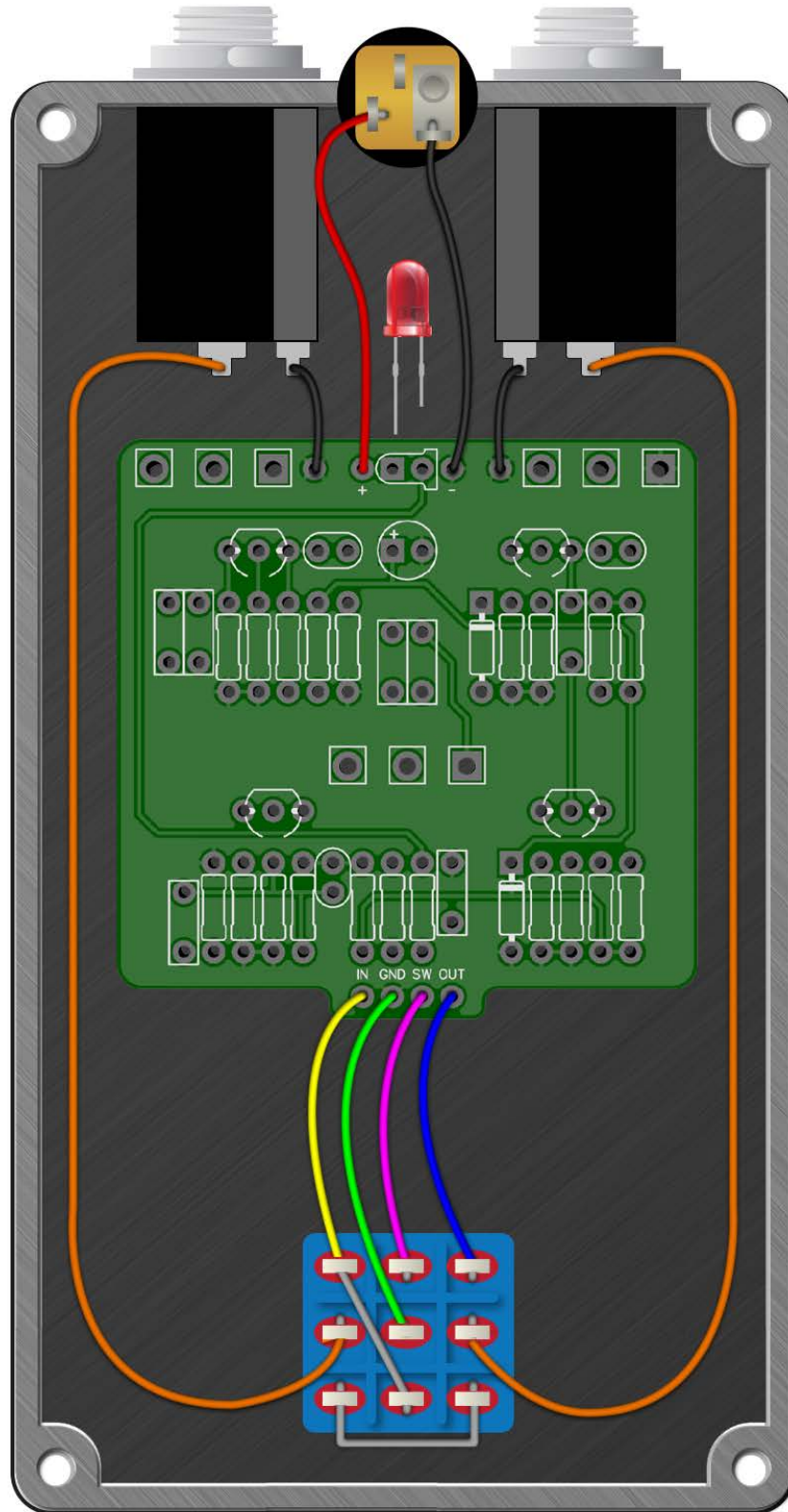
Emu Amp Simulator faceplate is highly recommended for this build  
<https://www.pedalpcb.com/product/emu-faceplate/>

# Emu Amp Simulator



# Emu Amp Simulator

Wiring Diagram



# Emu Amp Simulator

Drill Template  
1590BB Enclosure

