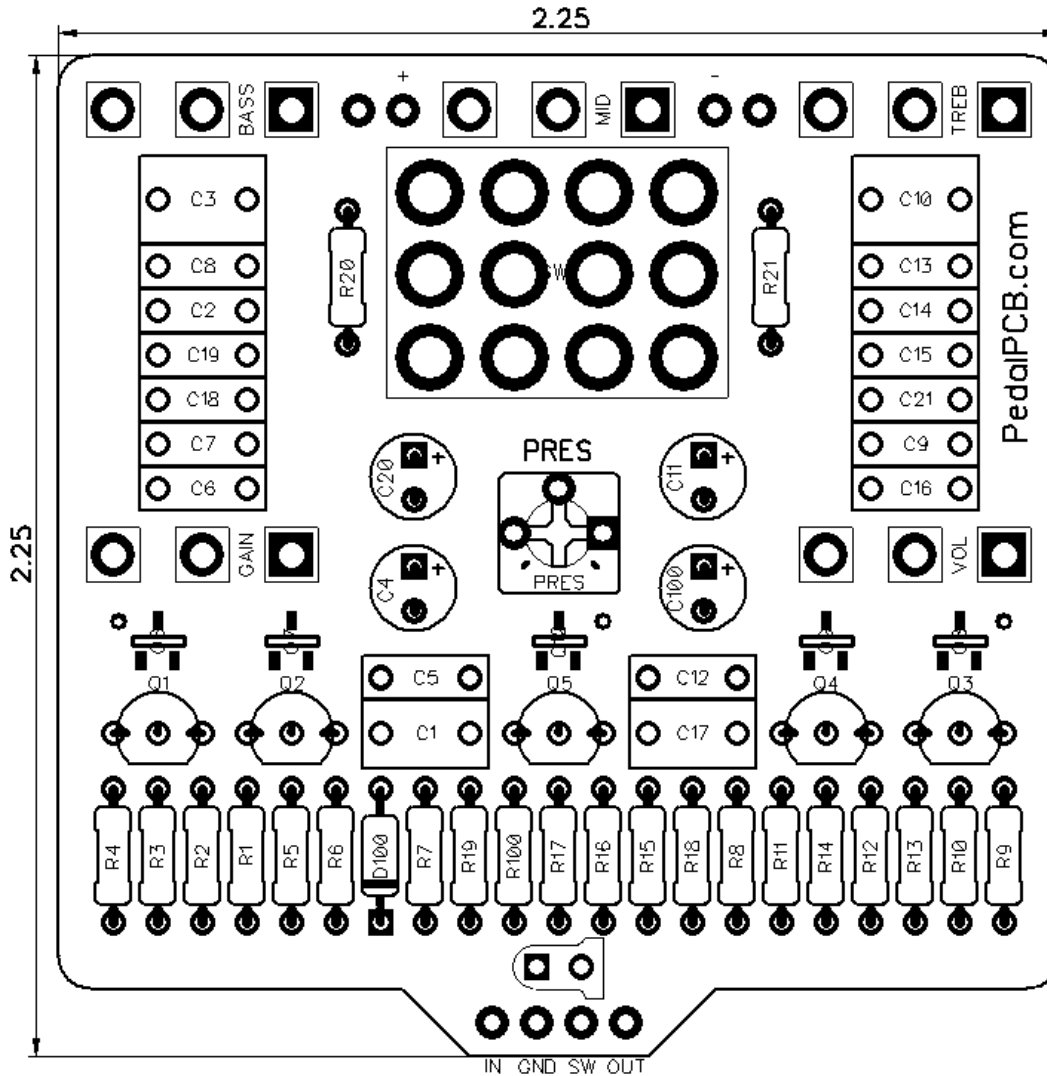




PedalPCB

Covert Overdrive

Revision 11.28.18



Controls

- Volume
- Preamp
- Treble
- Mid
- Bass
- Presence (Trim pot)
- Lead/Bass (Toggle switch)

All trademarks and registered trademarks are the property of their respective owners. The company, product, and service names used in this web site are for identification purposes only. Use of these names, logos, and brands does not imply endorsement.

Covert Overdrive

Parts List

RESISTORS (1/4W)

R1	470K
R2	33K
R3	820R
R4	1K
R5	1M
R6	1M
R7	47K
R8	470K
R9	470K
R10	560R
R11	1K
R12	1M
R13	1M
R14	100K
R15	33K
R16	1K
R17	4K7
R18	2M2
R19	2M2
R20	1M
R21	56K
R100	4K7

CAPACITORS

C1	220n
C2	1n
C3	680n
C4	2u2
C5	220p
C6	22n
C7	47p
C8	470p
C9	470p
C10	680n
C11	2u2
C12	470p
C13	470p
C14	22n
C15	22n
C16	22n
C17	220n
C18	100n
C19	2n2
C20	22u
C21	270p
C100	22u

SWITCHES

SW1	4PDT Toggle
-----	-------------

TRANSISTORS

Choose between Through-Hole or SMD

Through-Hole

Q1	MPF4393
Q2	MPF4393
Q3	MPF4393
Q4	MPF4393
Q5	MPF4393

SMD

Q6	MMBF4393
Q7	MMBF4393
Q8	MMBF4393
Q9	MMBF4393
Q10	MMBF4393

DIODES

D100	1N5817
------	--------

POTENTIOMETERS

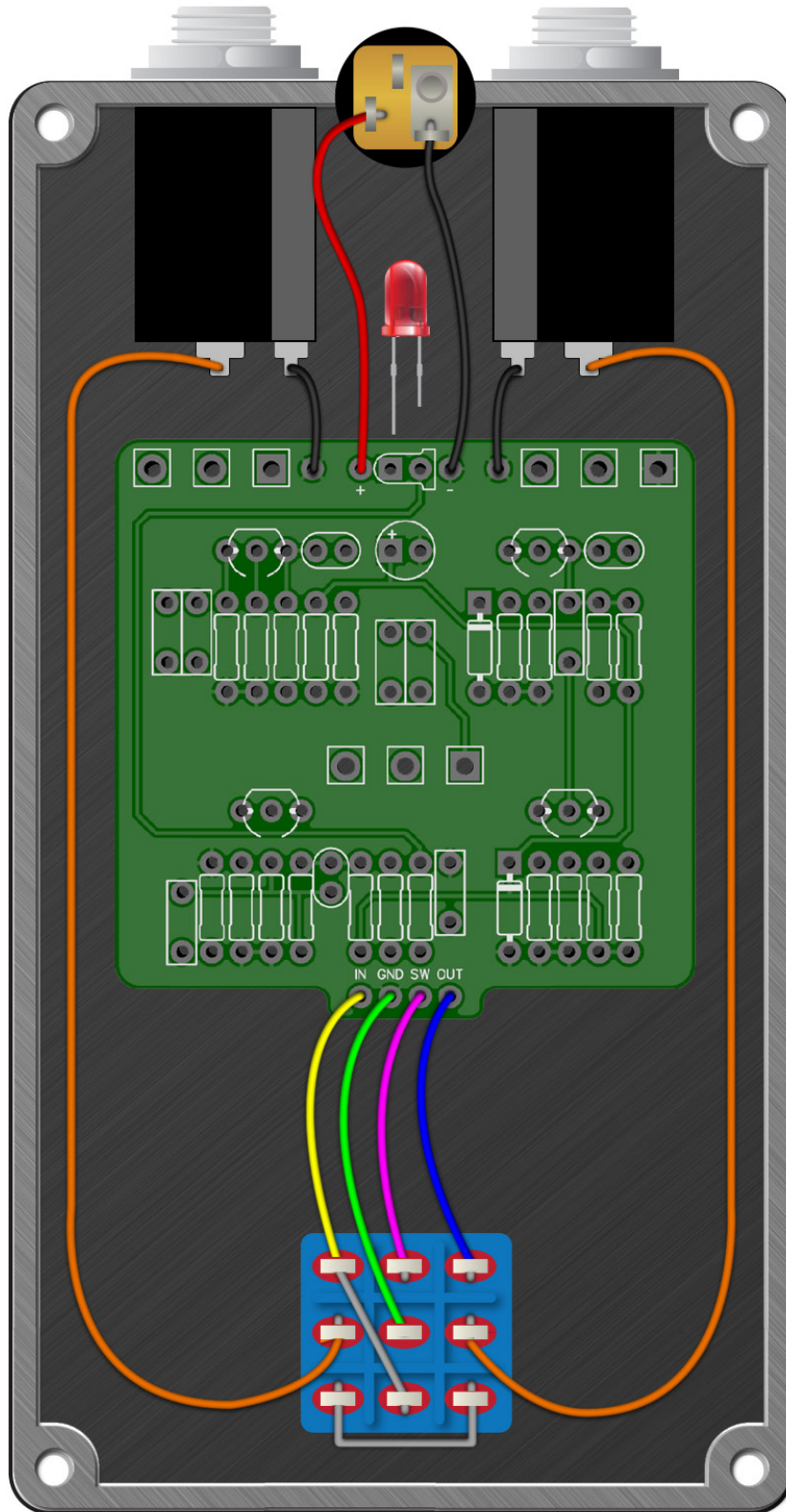
PREAMP	A1M
VOL	B250K
TREB	B250K
MID	B25K
BASS	A1M

TRIM POTS (3362P)

PRES	10K
------	-----

Covert Overdrive

Wiring Diagram



Covert Overdrive

Drill Template
125B enclosure with top mounted jacks

