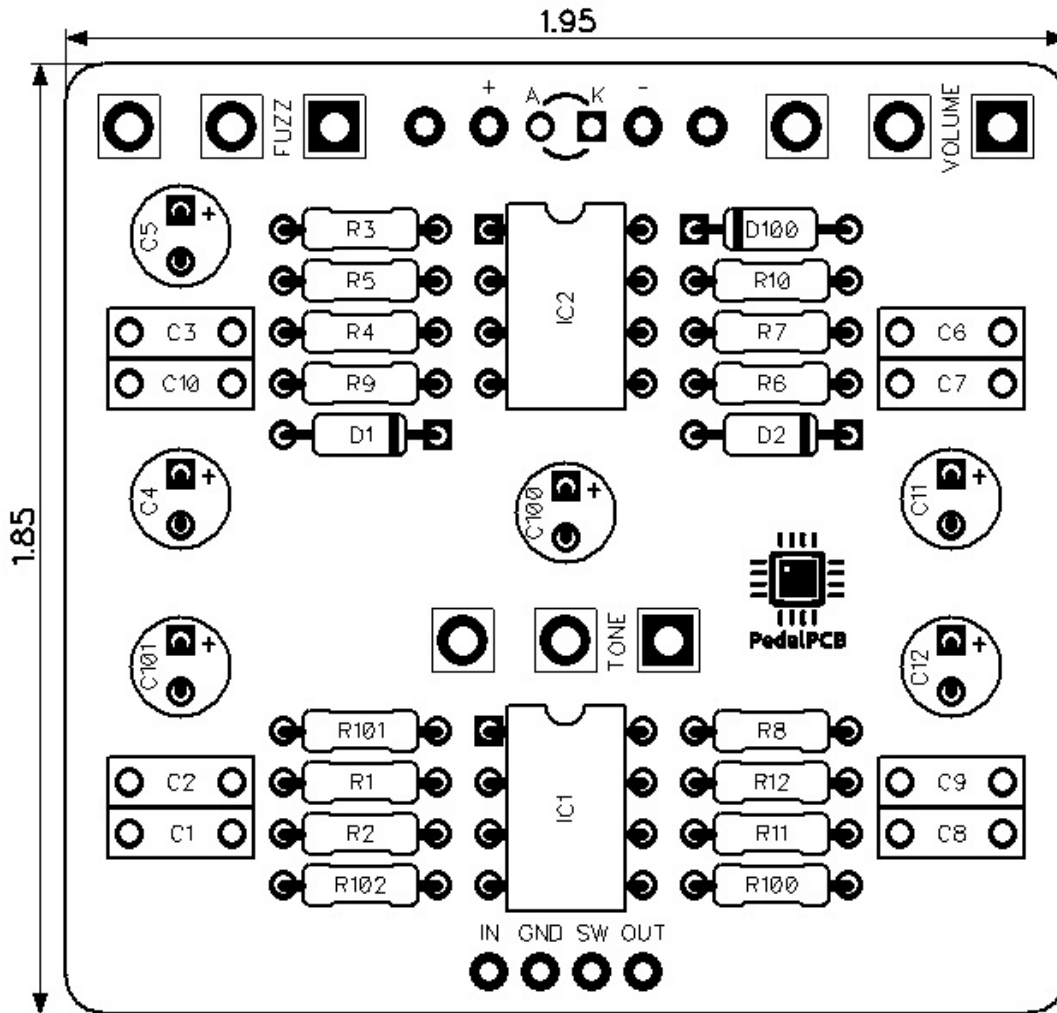


PedalPCB

Classic '52 Fuzz

Revised 7/17/21



CONTROLS AND FEATURES

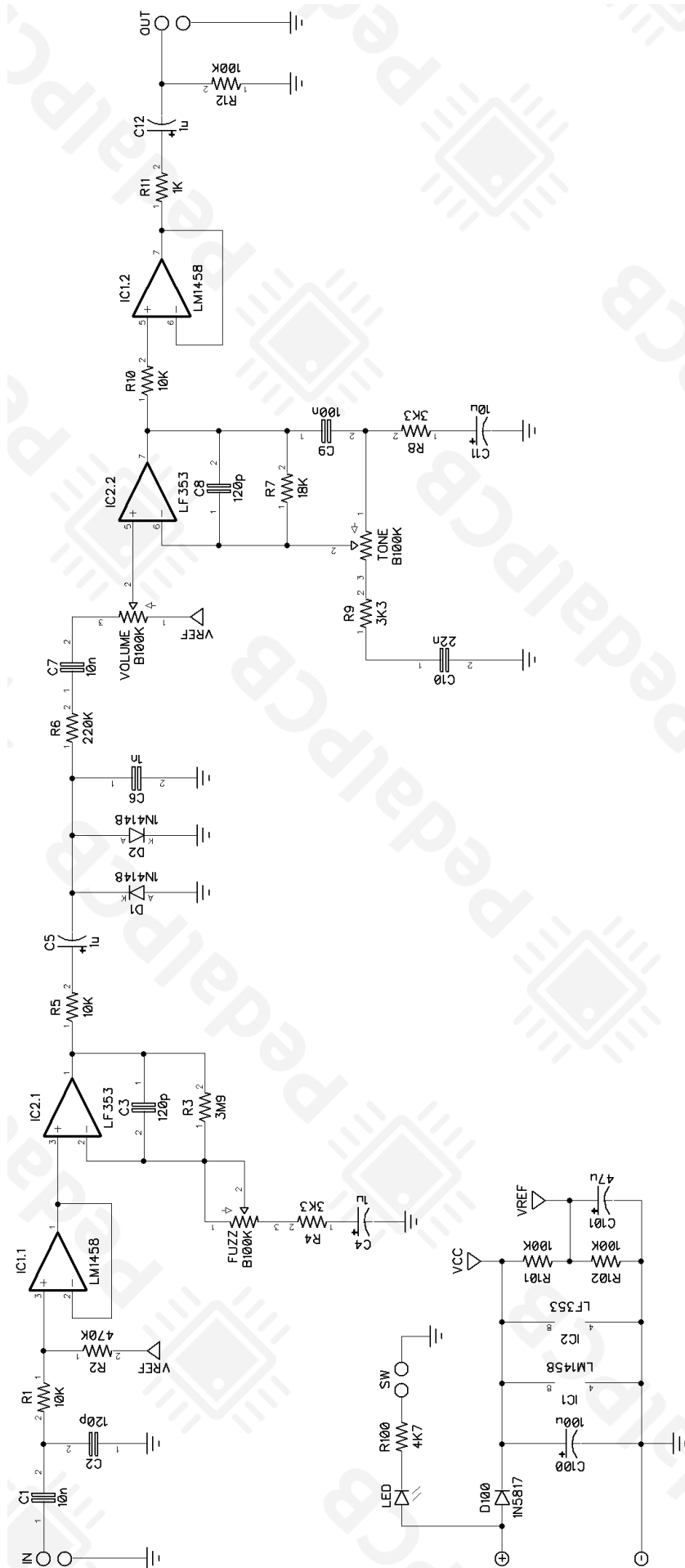
- Volume
- Fuzz
- Tone

All trademarks and registered trademarks are the property of their respective owners. The company, product, and service names used in this web site are for identification purposes only. Use of these names, logos, and brands does not imply endorsement.

LOCATION	VALUE	TYPE	NOTES
R1	10K	Resistor, 1/4W	
R2	470K	Resistor, 1/4W	
R3	3M9	Resistor, 1/4W	
R4	3K3	Resistor, 1/4W	
R5	10K	Resistor, 1/4W	
R6	220K	Resistor, 1/4W	
R7	18K	Resistor, 1/4W	
R8	3K3	Resistor, 1/4W	
R9	3K3	Resistor, 1/4W	
R10	10K	Resistor, 1/4W	
R11	1K	Resistor, 1/4W	
R12	100K	Resistor, 1/4W	
R100	4K7	Resistor, 1/4W	
R101	100K	Resistor, 1/4W	
R102	100K	Resistor, 1/4W	
C1	10n	Film capacitor, 7.2 x 2.5mm	
C2	120p	Ceramic capacitor	
C3	120p	Ceramic capacitor	
C4	1u	Electrolytic capacitor, 5mm	
C5	1u	Electrolytic capacitor, 5mm	
C6	1n	Film capacitor, 7.2 x 2.5mm	
C7	10n	Film capacitor, 7.2 x 2.5mm	
C8	120p	Ceramic capacitor	
C9	100n	Film capacitor, 7.2 x 2.5mm	
C10	22n	Film capacitor, 7.2 x 2.5mm	
C11	10u	Electrolytic capacitor, 5mm	
C12	1u	Electrolytic capacitor, 5mm	
C100	100u	Electrolytic capacitor, 5mm	
C101	47u	Electrolytic capacitor, 5mm	
D1	1N4148	Signal diode, DO-35	
D2	1N4148	Signal diode, DO-35	
D100	1N5817	Schottky diode, DO-41	
IC1	LM1458	Dual op-amp, DIP8	
IC2	LF353	Dual op-amp, DIP8	
VOLUME	B100K	16mm right-angle PCB mount pot	
TONE	B100K	16mm right-angle PCB mount pot	
FUZZ	B100K	16mm right-angle PCB mount pot	

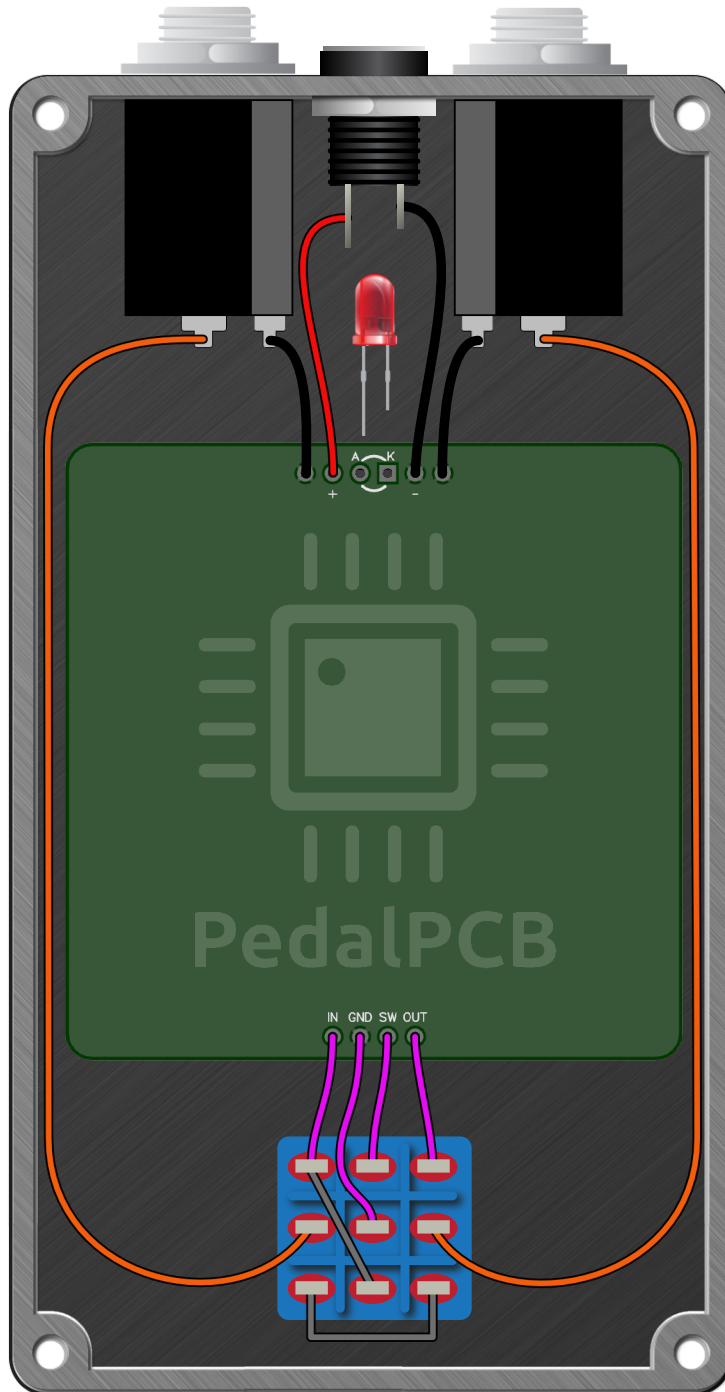
Classic '52 Fuzz

Schematic Diagram



Classic '52 Fuzz

Wiring Diagram



Classic '52 Fuzz

Drill Template
125B Enclosure

