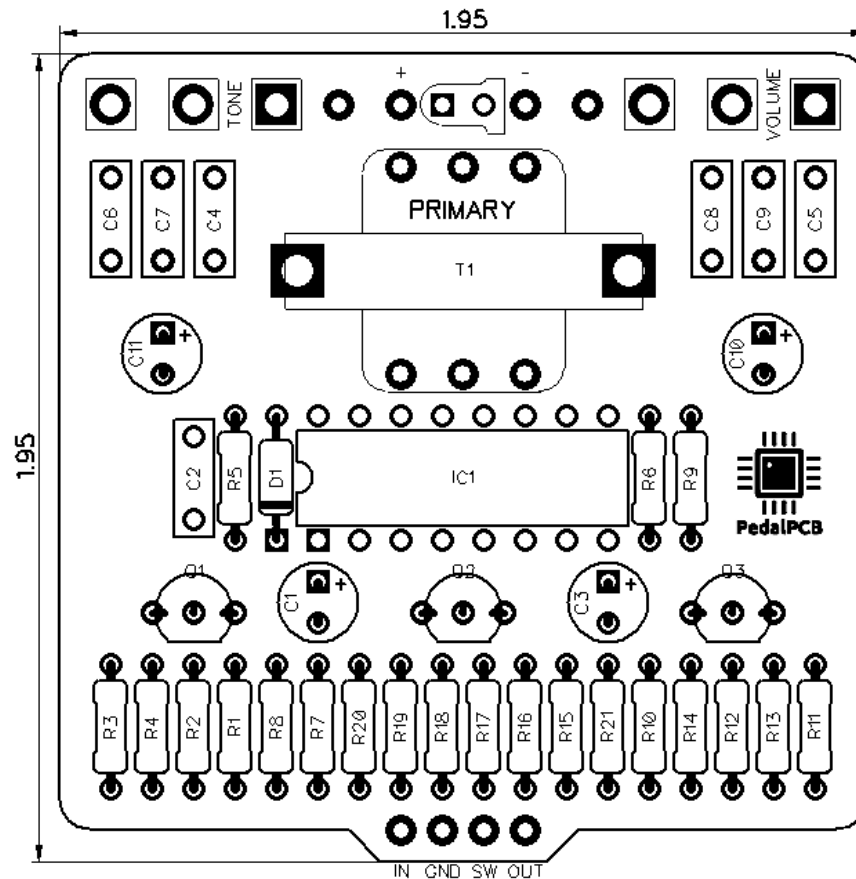




PedalPCB

Chrome Dome Distortion

Revision 06.22.18



Controls

- **Volume** - Controls the overall output volume
- **Tone** - Adjusts the emphasized frequency range

All trademarks and registered trademarks are the property of their respective owners. The company, product, and service names used in this web site are for identification purposes only. Use of these names, logos, and brands does not imply endorsement.

Chrome Dome Distortion

Parts List

RESISTORS (1/4W)

R1 470K
R2 220K
R3 10K
R4 150R
R5 68K
R6 1K5
R7 22K
R8 470R
R9 330K
R10 82K
R11 470K
R12 470K
R13 1K
R14 10K
R15 1M5
R16 150K
R17 2M2
R18 150K
R19 220K
R20 22K
R21 4K7

CAPACITORS

C1 22u
C2 10n
C3 4u7
C4 220n
C5 22n
C6 220n
C7 100n
C8 100n
C9 22p
C10 4u7
C11 47u

INTEGRATED CIRCUITS

IC1 CD4049UBE

TRANSISTORS

Q1 2N5088
Q2 2N5210
Q3 2N5210

DIODES

D1 1N5817

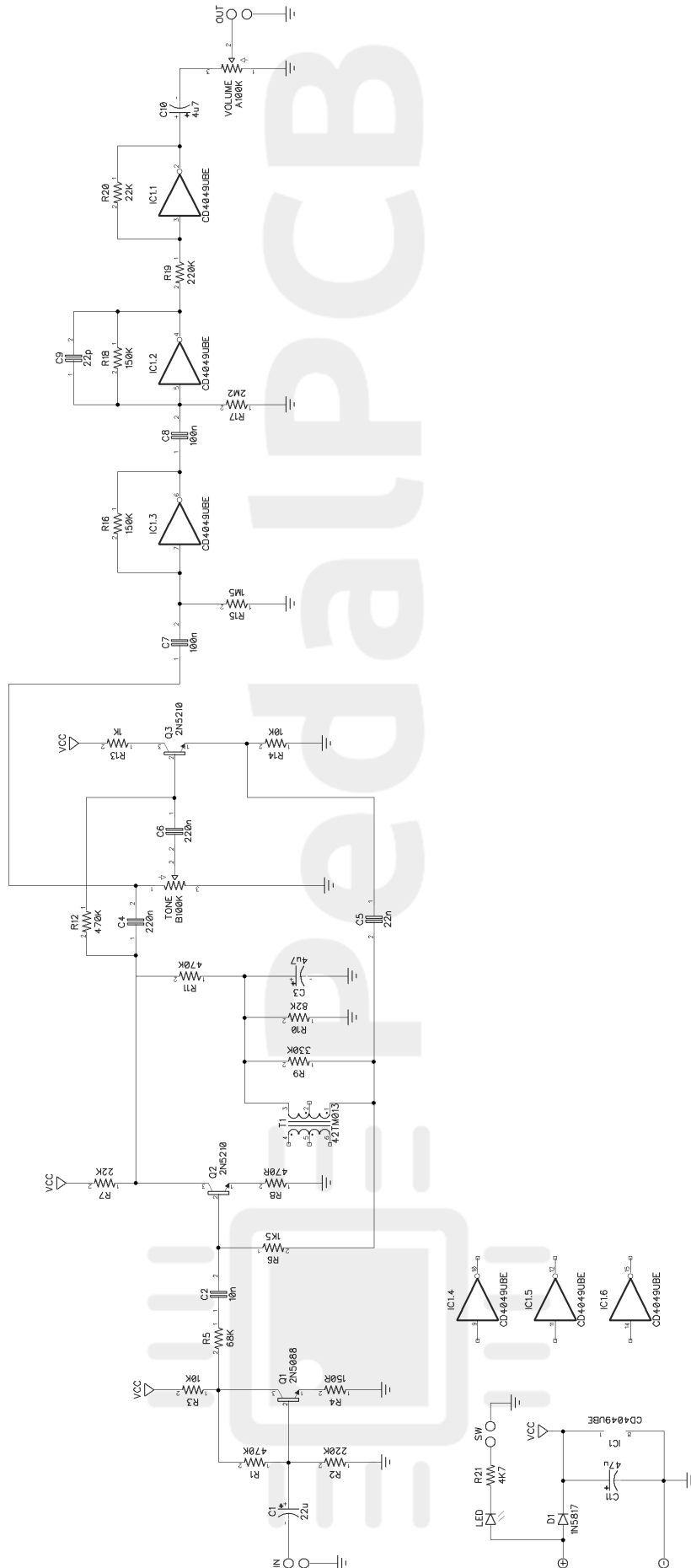
TRANSFORMERS

T1 42TM013

POTENTIOMETERS

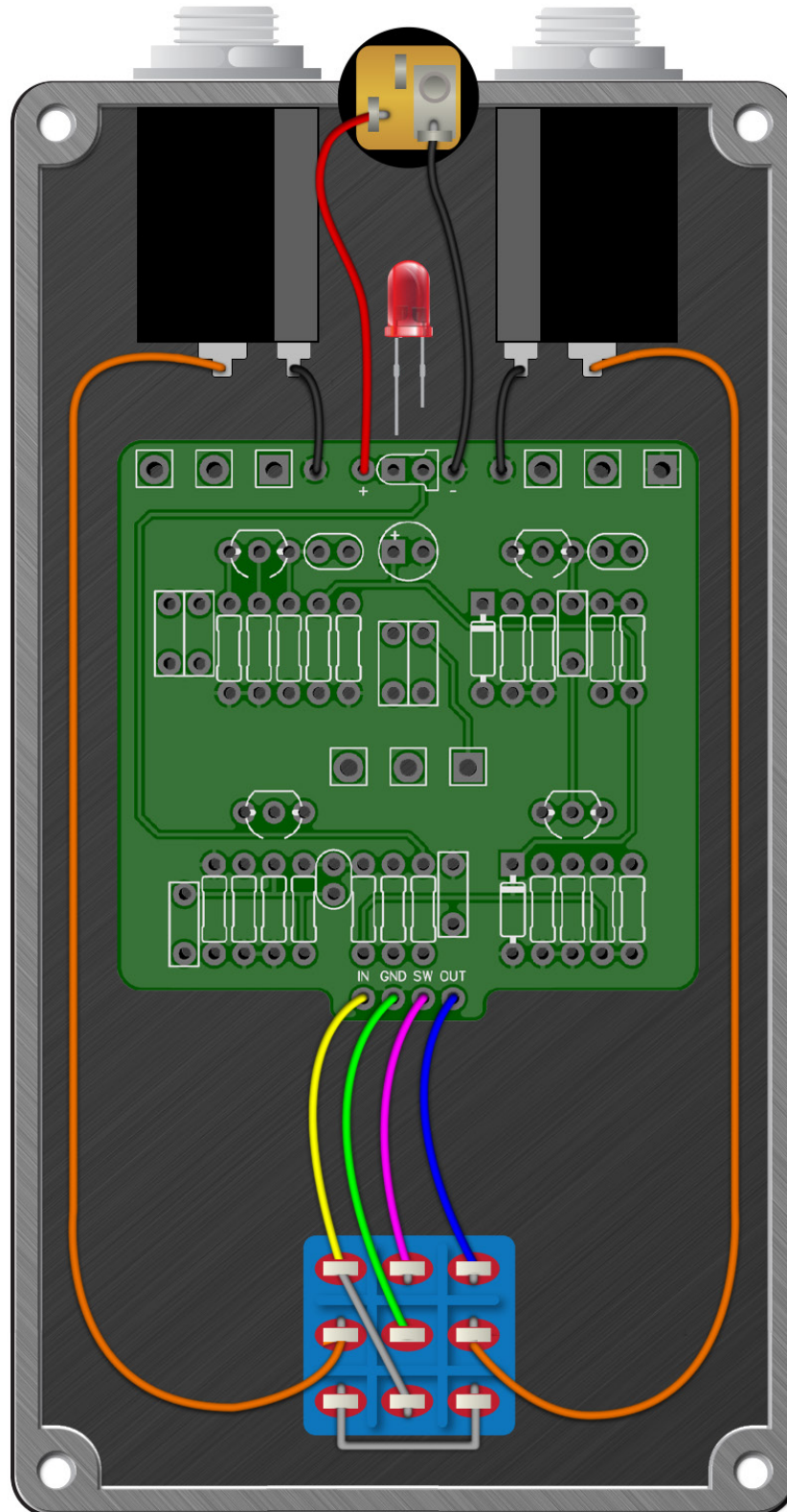
VOLUME A100K
TONE B100K

Chrome Dome Distortion



Chrome Dome Distortion

Wiring Diagram



Chrome Dome Distortion

Drill Template

125B enclosure with top mounted jacks

