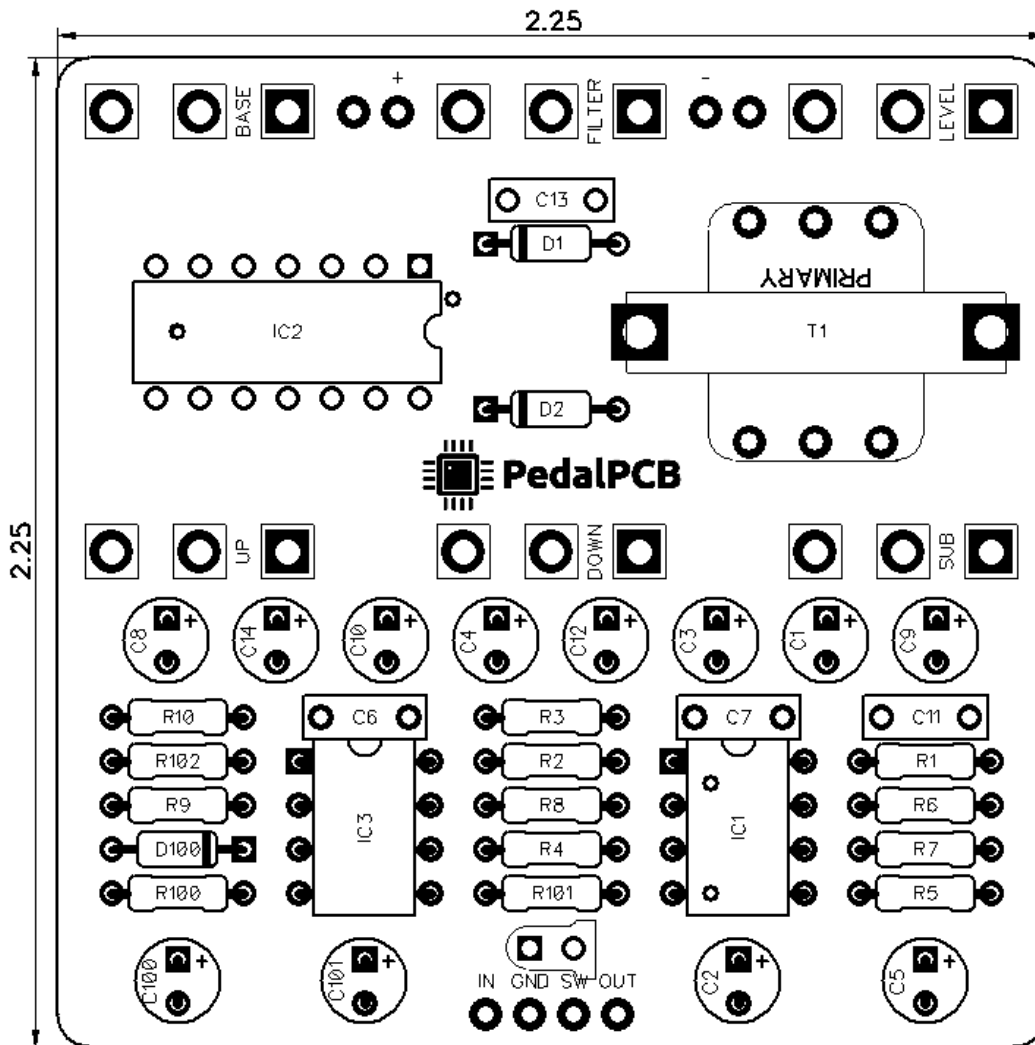




PedalPCB

Captain Bit

Revision 09.22.18



Controls

- **Level** – Controls overall output volume
- **Filter** – Controls brightness/warmth
- **Base** – Adjusts level of root square wave tone
- **Sub** – Two octaves down level
- **Down** – One octave down level
- **Up** – One octave up level

All trademarks and registered trademarks are the property of their respective owners. The company, product, and service names used in this web site are for identification purposes only. Use of these names, logos, and brands does not imply endorsement.

RESISTORS (1/4W)

R1 1M
R2 22K
R3 100K
R4 100K
R5 220K
R6 47K
R7 220K
R8 220K
R9 10K
R10 10K
R100 4K7
R101 10K
R102 10K

CAPACITORS

C1 1u
C2 10u
C3 1u
C4 1u
C5 100u
C6 10n
C7 22n
C8 1u
C9 1u
C10 1u
C11 1n
C12 1u
C13 22n
C14 1u
C100 100u
C101 10u

INTEGRATED CIRCUITS

IC1 JRC386D
IC2 CD4024BE
IC3 TL072

TRANSFORMERS

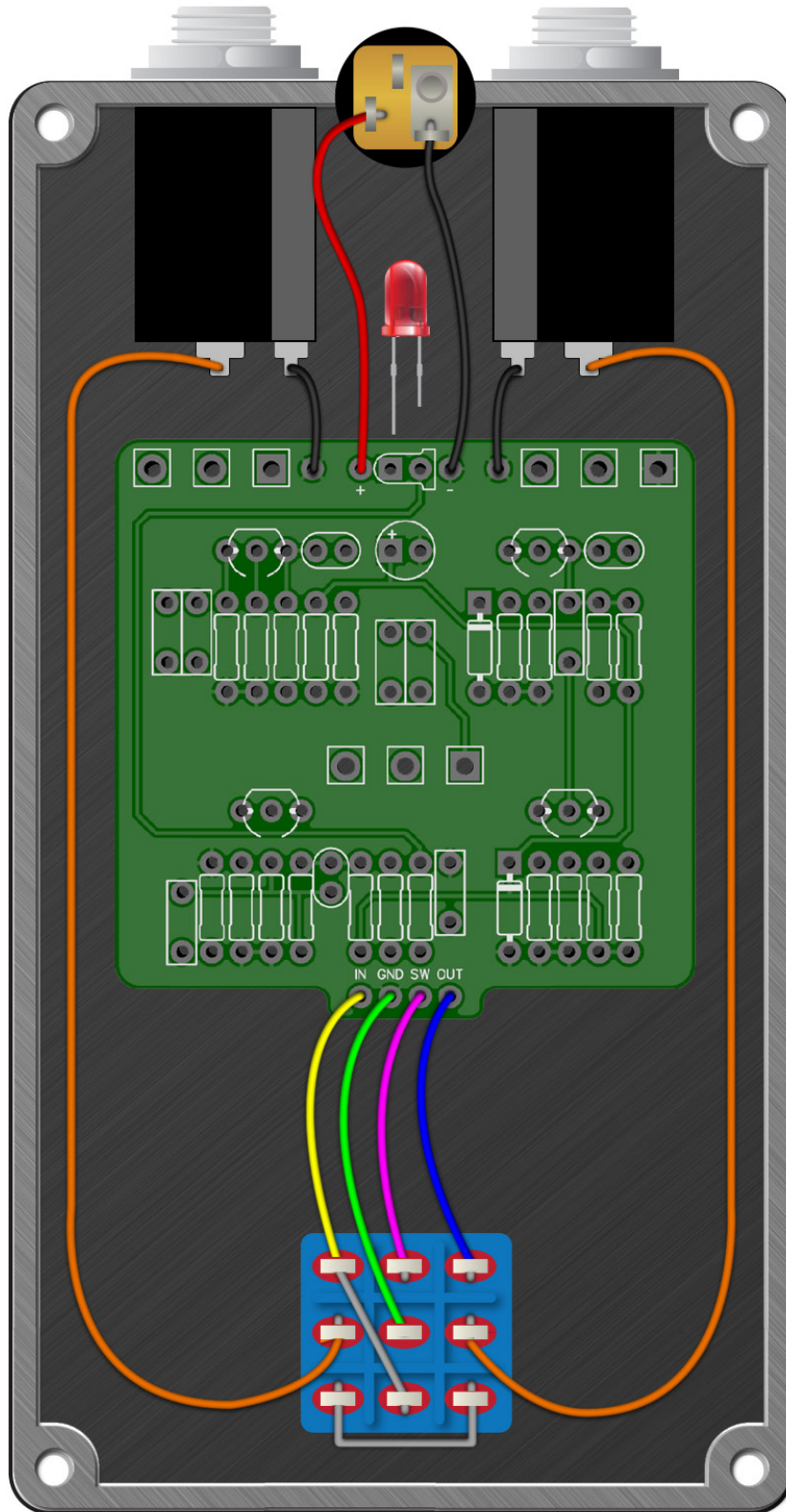
T1 TM011-R

DIODES

D1 1N4148
D2 1N4148
D100 1N5817

POTENTIOMETERS

LEVEL A100K
FILTER B5K
BASE B100K
SUB B100K
DOWN B100K
UP B2K



Captain Bit

Drill Template
125B enclosure with top mounted jacks

