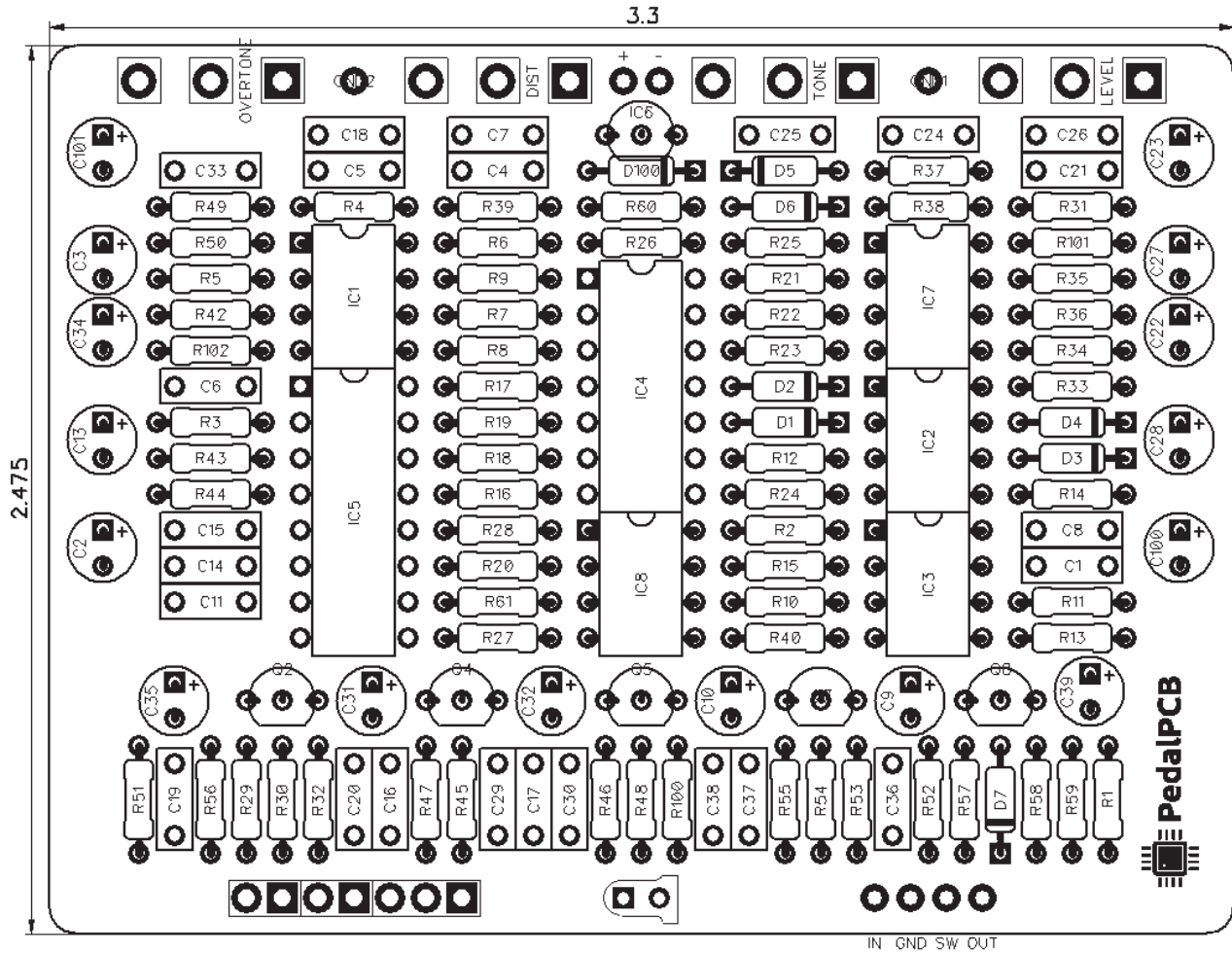


# PedalPCB

## Backfeeder

Revision 01.21.19



### Controls

- Overtone
- Distortion
- Tone
- Level

All trademarks and registered trademarks are the property of their respective owners. The company, product, and service names used in this web site are for identification purposes only. Use of these names, logos, and brands does not imply endorsement.

**RESISTORS (1/4W)**

R1	10K	R61	470K
R2	1M	R100	4K7
R3	1K	R101	10K
R4	22K	R102	10K
R5	2K2		
R6	22K		
R7	330K		
R8	330K		
R9	33K		
R10	33K		
R11	68K		
R12	10K		
R13	1K		
R14	10K		
R15	1K		
R16	22K		
R17	22K		
R18	47K		
R19	47K		
R20	47K		
R21	1M		
R22	22K		
R23	22K		
R24	22K		
R25	1M		
R26	1M		
R27	47K		
R28	10K		
R29	22R		
R30	100K		
R31	10K		
R32	470K		
R33	68K		
R34	100K		
R35	1K		
R36	4K7		
R37	2K2		
R38	6K8		
R39	6K8		
R40	470K		
R42	100K		
R43	10K		
R44	10K		
R45	10K		
R46	10K		
R47	10K		
R48	10K		
R49	10K		
R50	10K		
R51	470K		
R52	470K		
R53	10K		
R54	10K		
R55	10K		
R56	150K		
R57	10K		
R58	470K		
R59	1K		
R60	2K2		

**CAPACITORS**

C1	22n
C2	1u
C3	1u
C4	10n
C5	2n2
C6	220p
C7	330p
C8	10n
C9	1u
C10	1u
C11	6n8
C13	10u
C14	10n
C15	100n
C16	1n5
C17	220n
C18	56n
C19	47n
C20	47p
C21	100n
C22	1u
C23	470n
C24	10n
C25	22n
C26	100n
C27	1u
C28	10u
C29	47n
C30	22n
C31	1u
C32	1u
C33	22n
C34	1u
C35	1u
C36	1n
C37	82n
C38	22n
C39	10u
C100	100u
C101	47u

**FOOTSWITCHES**

BYPASS	3PDT Latching
FEEDBACK	3PDT Momentary

**INTEGRATED CIRCUITS**

IC1	TL072
IC2	TL072
IC3	TL072
IC4	CD4013N
IC5	CD4046N
IC6	L78L05
IC7	TL072
IC8	TL072

**TRANSISTORS**

Q2	2SC732
Q4	2SC2603
Q5	2SC2603
Q7	2SC732
Q8	2SC2603

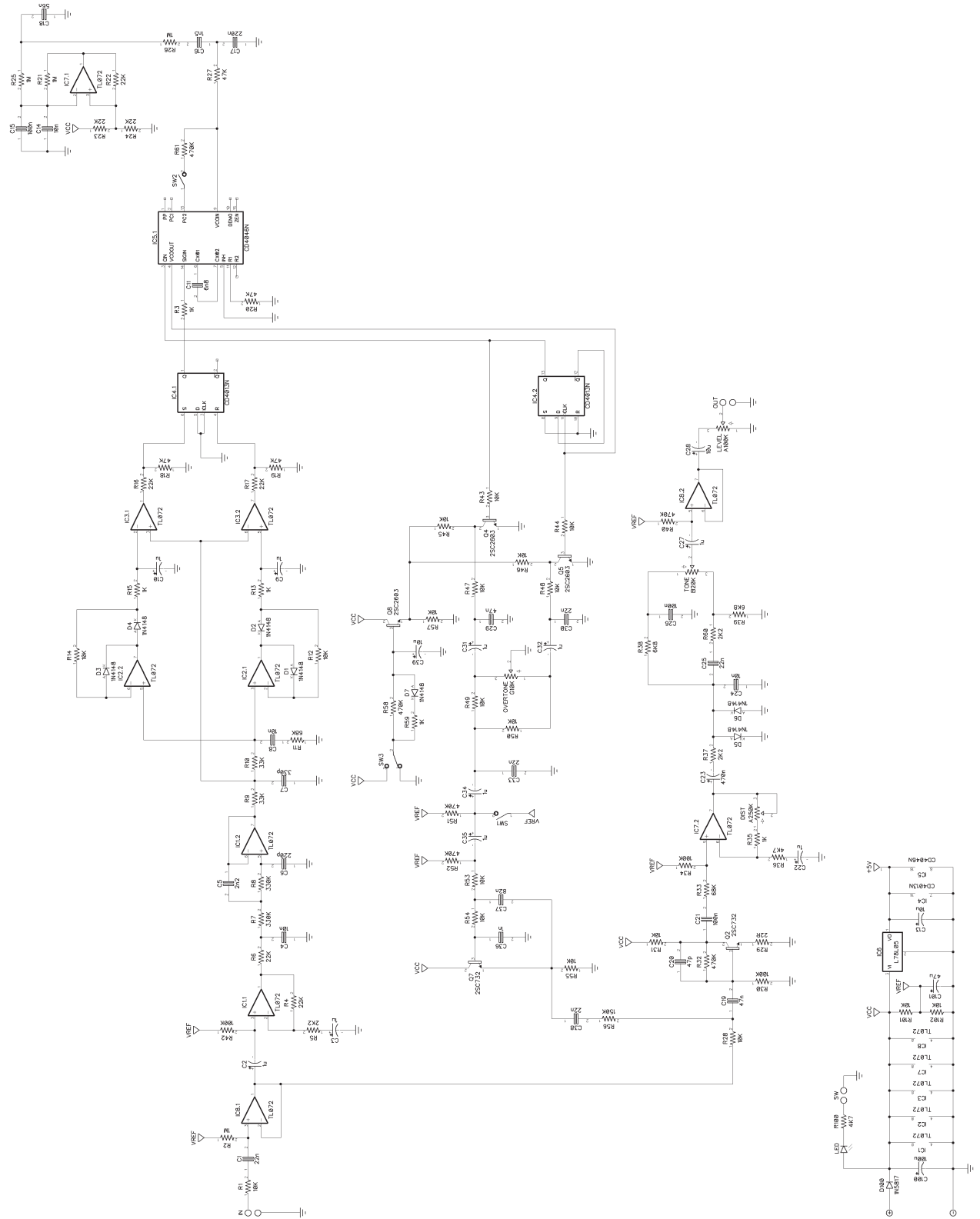
**DIODES**

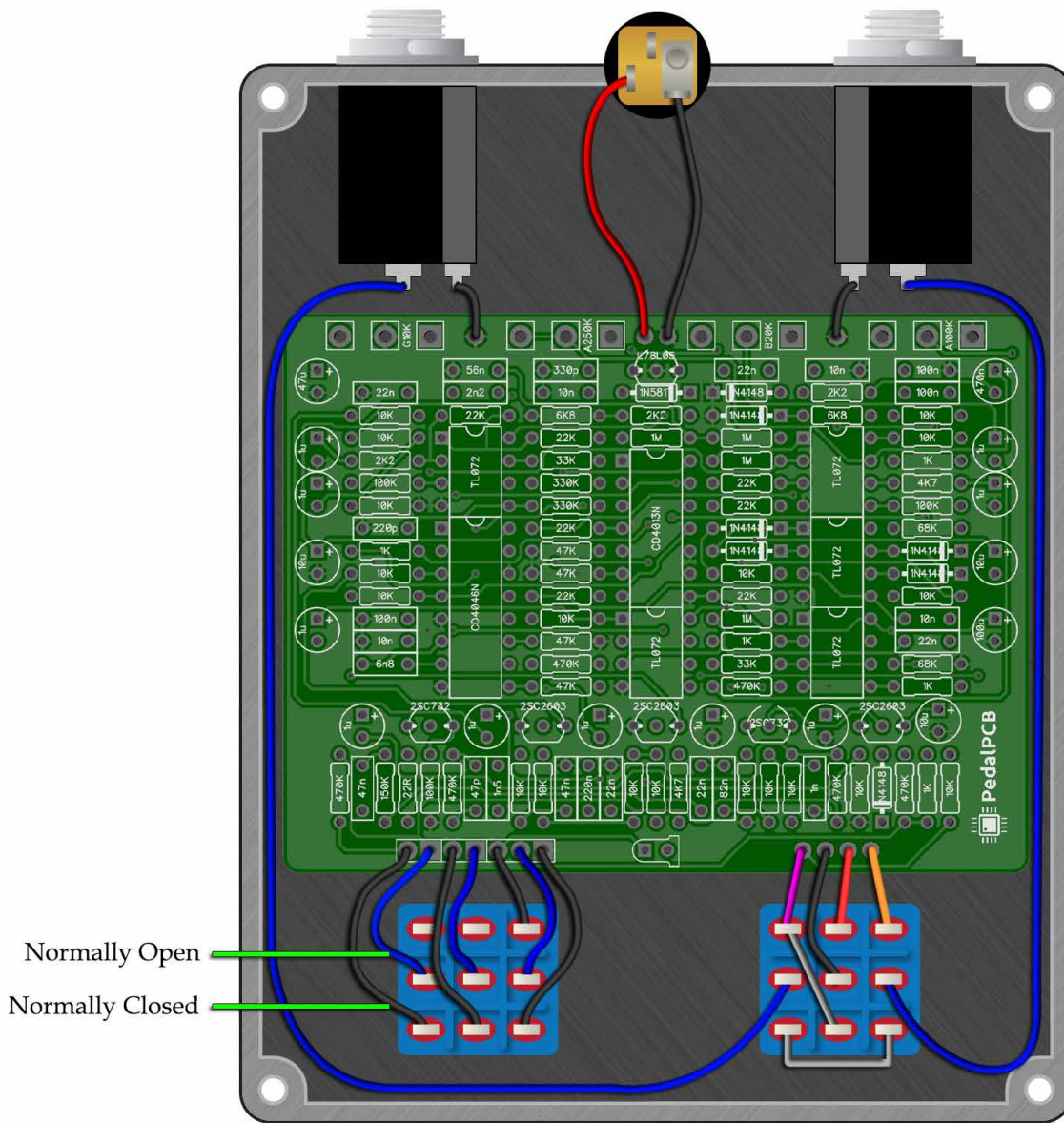
D1	1N4148
D2	1N4148
D3	1N4148
D4	1N4148
D5	1N4148
D6	1N4148
D7	1N4148
D100	1N5817

**POTENTIOMETERS**

OVERTONE	G10K
DIST	A250K
TONE	B20K
LEVEL	A100K

**PedalPCB**  
**Backfeeder**





NOTE: Momentary 3PDT footswitch must be oriented with Normally Closed contacts towards the bottom of the enclosure.

