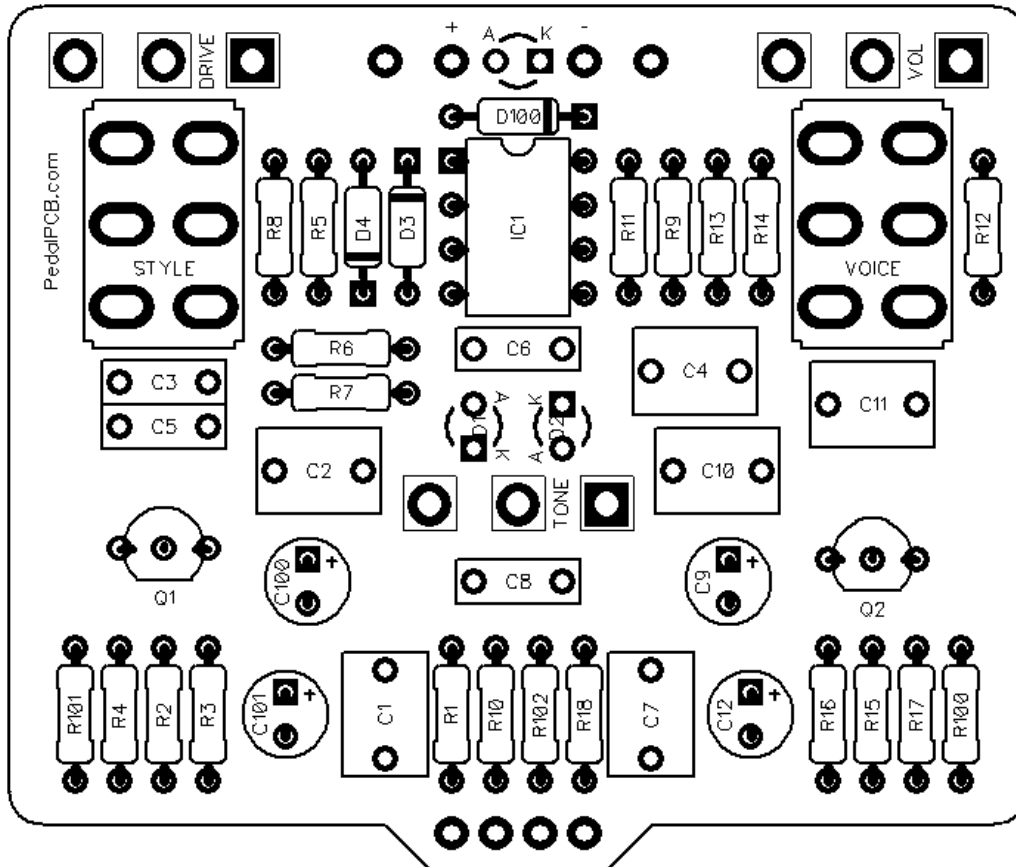


# PedalPCB

## Actual Overdrive Jr

Revision 09.04.20



### Controls

- Volume
- Tone
- Drive
- Voice (Toggle Switch)
- Style (Toggle Switch)

All trademarks and registered trademarks are the property of their respective owners. The company, product, and service names used in this web site are for identification purposes only. Use of these names, logos, and brands does not imply endorsement.

# Actual Overdrive Jr

## Parts List

### RESISTORS (1/4W)

R1	2M2
R2	1K
R3	510K
R4	10K
R5	10K
R6	1K8
R7	2K4
R8	22K
R9	1K
R10	220R
R11	10K
R12	1K
R13	1K
R14	1K
R15	510K
R16	10K
R17	100R
R18	10K
R100	10K
R101	10K
R102	4K7

### CAPACITORS

C1	220n
C2	1u FILM
C3	120n
C4	220n
C5	100n
C6	56p
C7	220n
C8	150n
C9	2u2
C10	1u FILM
C11	220n
C12	10u
C100	100u
C101	47u

### INTEGRATED CIRCUITS

IC1	RC4558
-----	--------

### TRANSISTORS

Q1	2N3904
Q2	2N3904

### DIODES

D1	3mm Red LED
D2	3mm Red LED
D3	1N4148
D4	1N4148
D100	1N5817

### POTENTIOMETERS

VOL	B100K
TONE	W20K
DRIVE	A500K

### SWITCHES

STYLE	DPDT (ON/OFF/ON)
VOICE	DPDT (ON/OFF/ON)

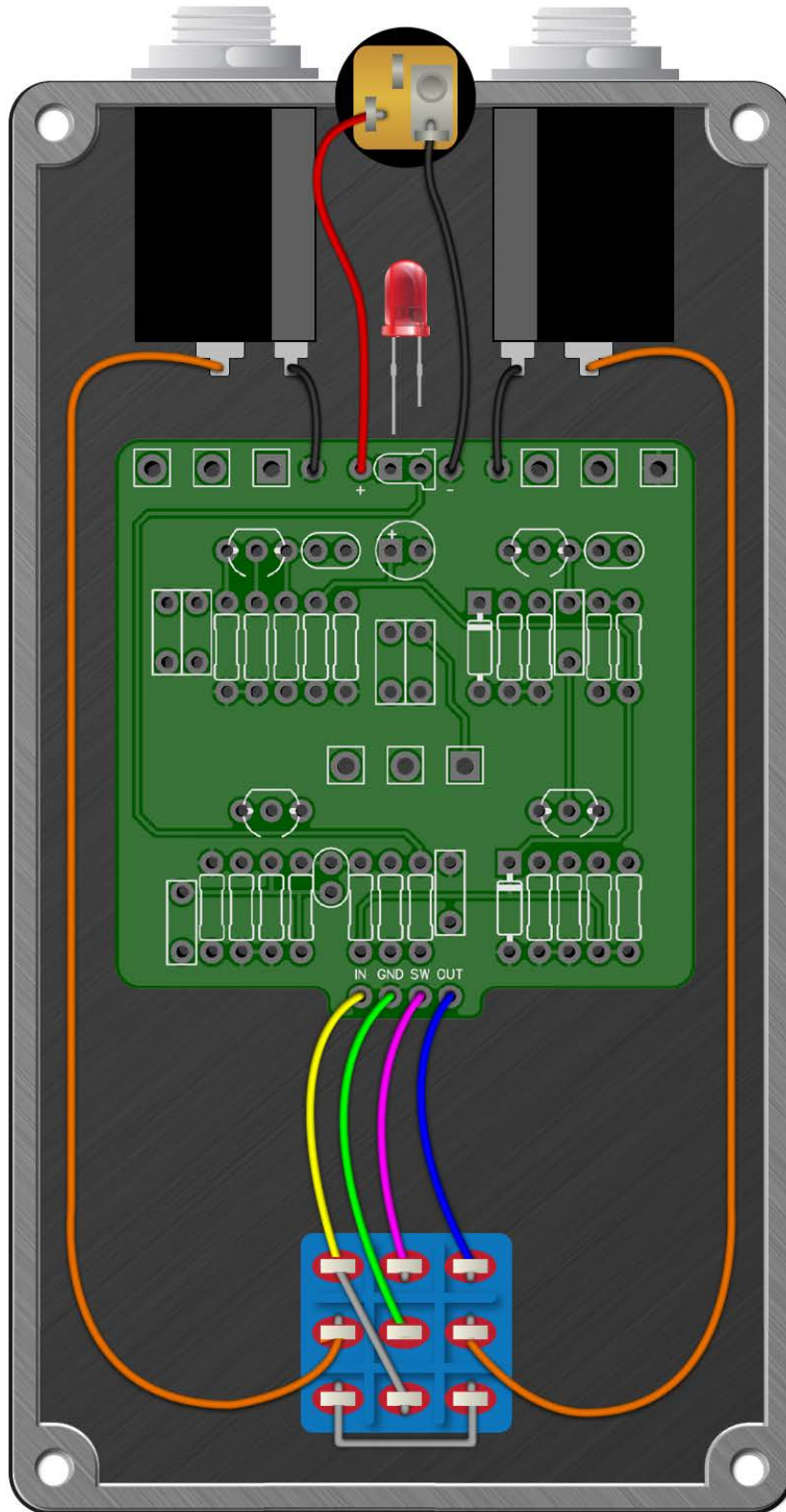


# **Actual Overdrive Jr**

# **Schematic Coming Soon**

# Actual Overdrive Jr

Wiring Diagram



# Actual Overdrive Jr

Drill Template  
125B Enclosure

